

# Southern California Edison NOTICE OF VEGETATION REMOVAL

As part of Southern California Edison's (SCE) Wildfire Mitigation Program, we will be conducting brush clearance around our equipment in efforts to minimize fire risk. This initiative is helping SCE to fire guard our structures and roads.

Brushing activities will take place at ground level. Vegetation will be removed from a 10-foot radius around poles, 5-foot radius around anchors, and a minimum 10-foot radius around and underneath any towers (25' radius around towers where achievable). Crews will use hand tools to remove vegetation. No herbicides will be used.

Example of a pole before and after vegetation removal:



Example of anchors before and after vegetation removal:



**Southern California Edison**  
**NOTICE OF VEGETATION REMOVAL**



Example of a tower before and after vegetation removal:



# Site Map – City of Los Angeles



Project Identifier: 102521\_City of Los Angeles

Location: West of Pole Rd, south of Forest Rd,  
City of Bishop (City of Los Angeles Property)

Contact: Xochitl Esparza  
(909)552-5182



# Site Map – City of Los Angeles



Project Identifier: 102521\_City of Los Angeles

Location: West of Blake St and School St intersection, City of Bishop (City of Los Angeles Property)

Contact: Xochitl Esparza  
(909)552-5182



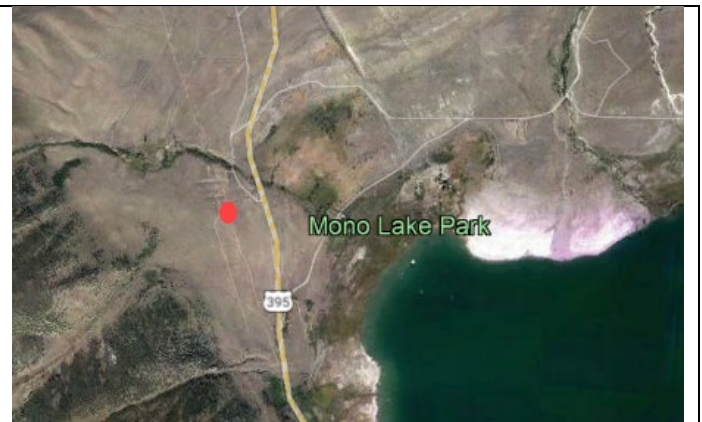
# Site Map – City of Los Angeles



Project Identifier: 102521\_City of Los Angeles

Location: West of 395, south of Thompson Rd,  
Mono Lake (City of Los Angeles Property)

Contact: Xochitl Esparza  
(909)552-5182



# Site Map – City of Los Angeles



Project Identifier: 102521\_City of Los Angeles

Location: Northwest of 395 and Thompson Rd intersection, Mono Lake (City of Los Angeles Property)

Contact: Xochitl Esparza  
(909)552-5182



# Site Map – City of Los Angeles



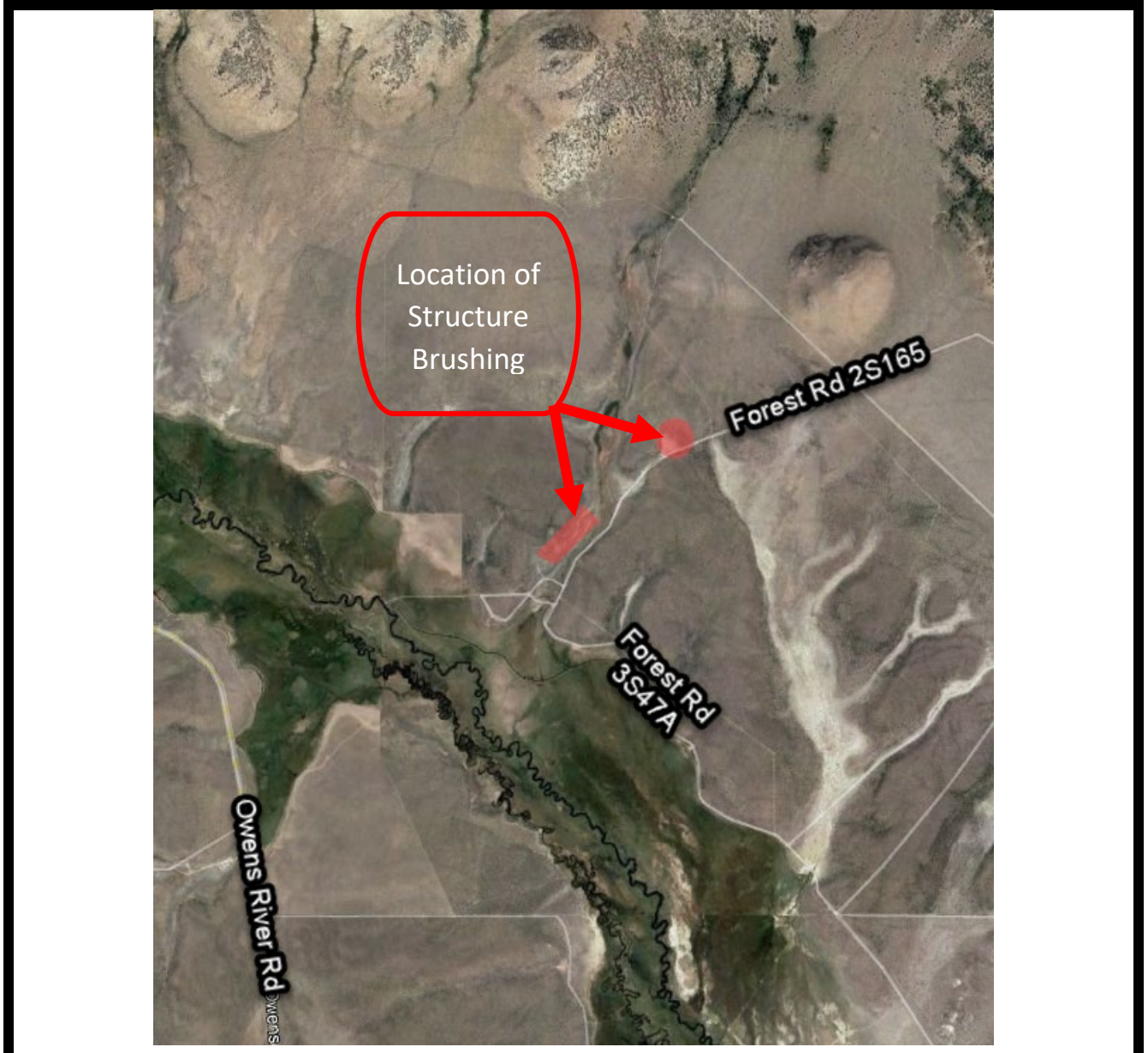
Project Identifier: 102521\_City of Los Angeles

Location: North of Mt. Morrison Rd and South of Hwy 395, Mono County (City of Los Angeles Property)

Contact: Xochitl Esparza  
(909)552-5182



# Site Map – City of Los Angeles



Project Identifier: 102521\_City of Los Angeles

Location: North of Forest RD 3S47A and South of Forest Rd 2S165 intersection, Mammoth Lakes (City of Los Angeles Property)

Contact: Xochitl Esparza  
(909)552-5182

