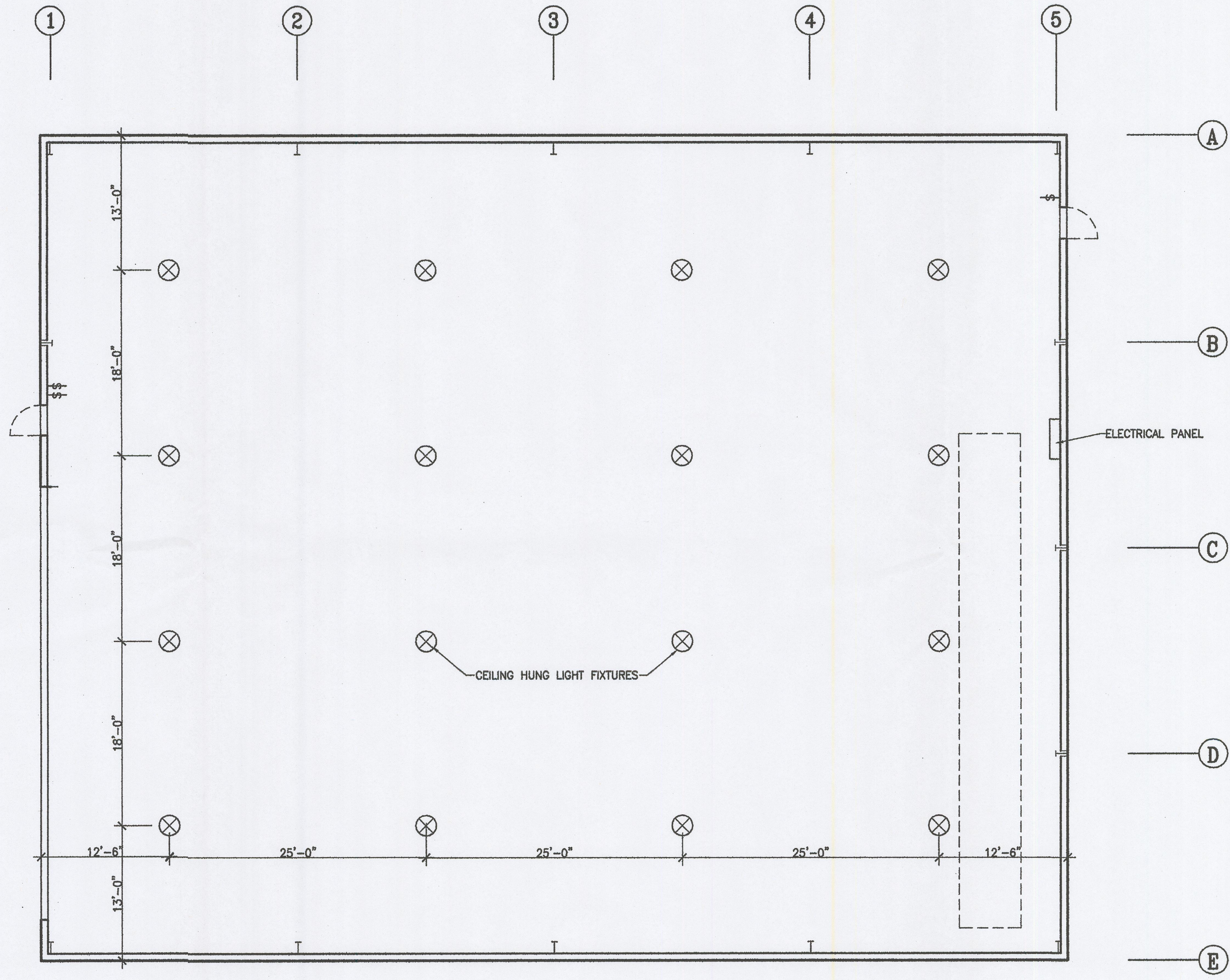
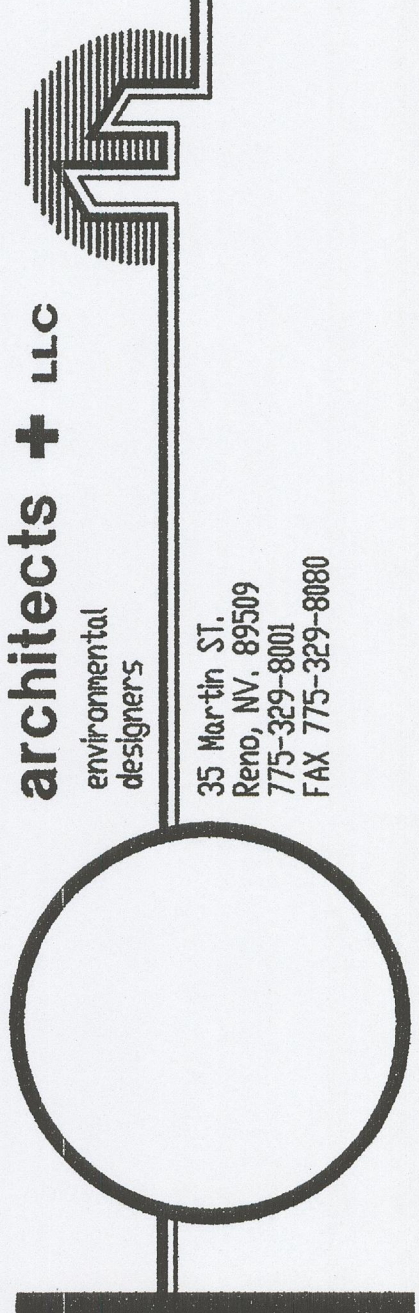


2 LOWER LEVEL LIGHTING PLAN
SCALE 1/8" = 1'-0"



1 MAIN LEVEL LIGHTING PLAN
SCALE 1/8" = 1'-0"

revisions



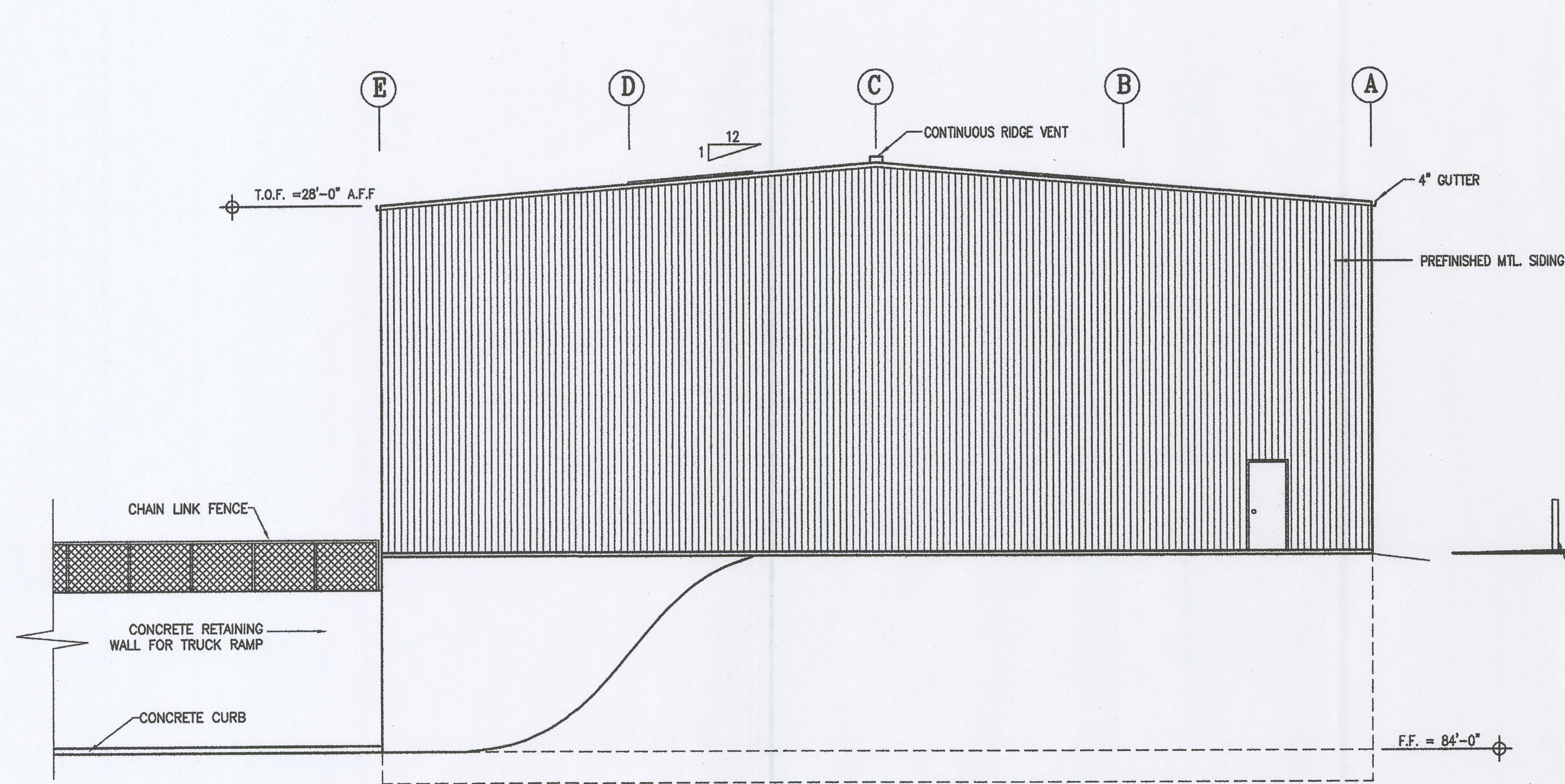
project
D & S WASTE REMOVAL,
Mono County Transfer Station
Highway 167, Mile Post 8
Mono County, California
by Christman Construction, Inc.

sheet title
LIGHTING PLAN

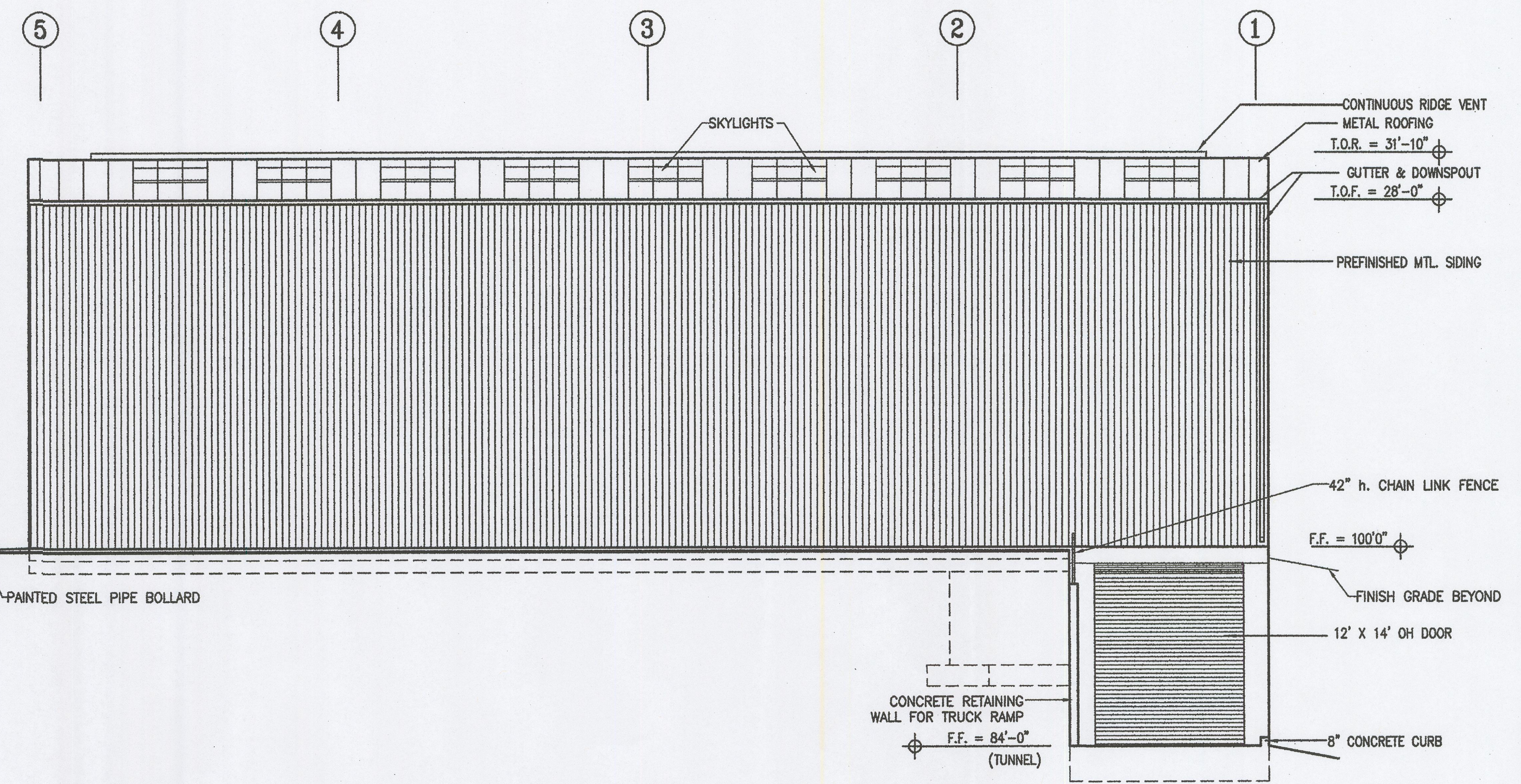
drawn by
E.B.
checked by
GE
date
05/14/10
job no.
-
sheet

A-5

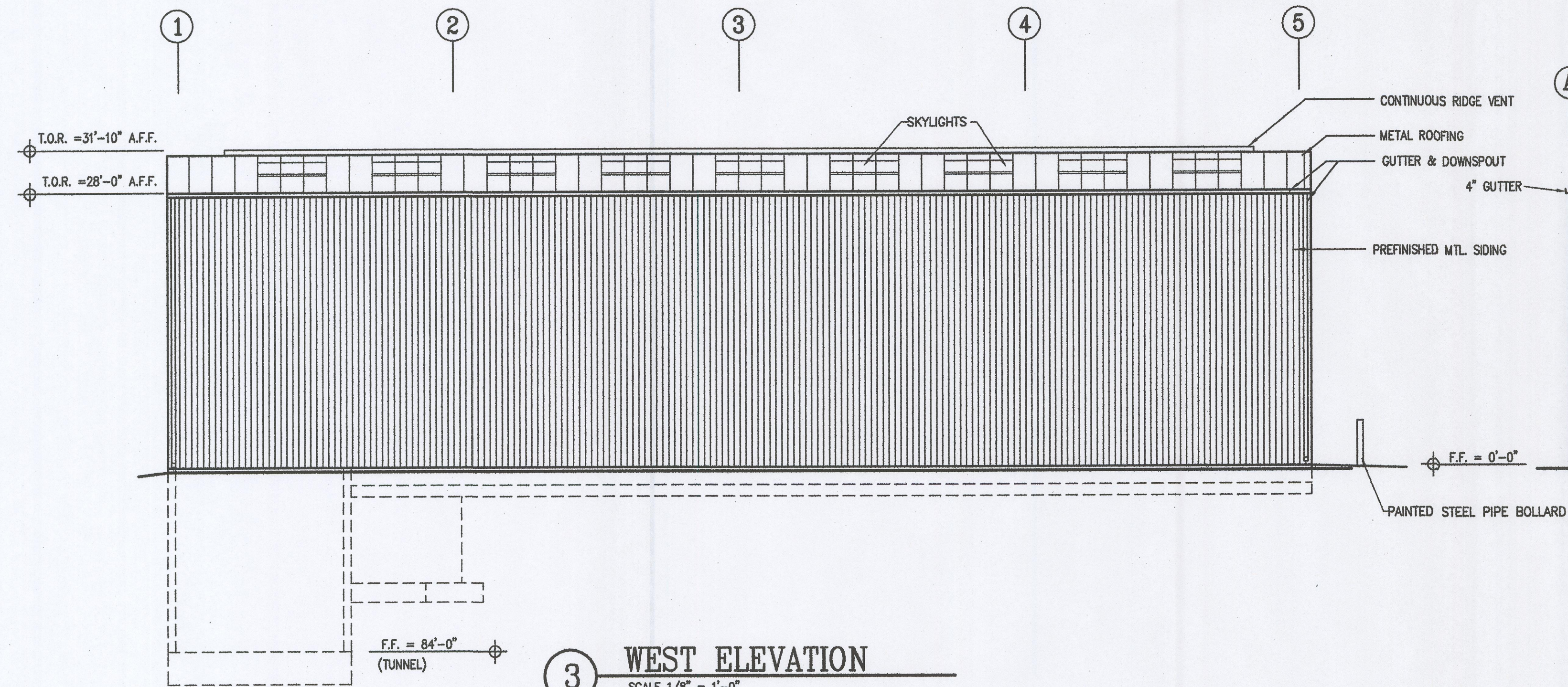
C:\DWG\Christman\CONST DOCT\Exterior Elevations.dwg, 5/11/2010 9:40:35 AM, Auto HP Designer.750C... (E_A0) by HP (Copy 1) on STATION3a... .pc3



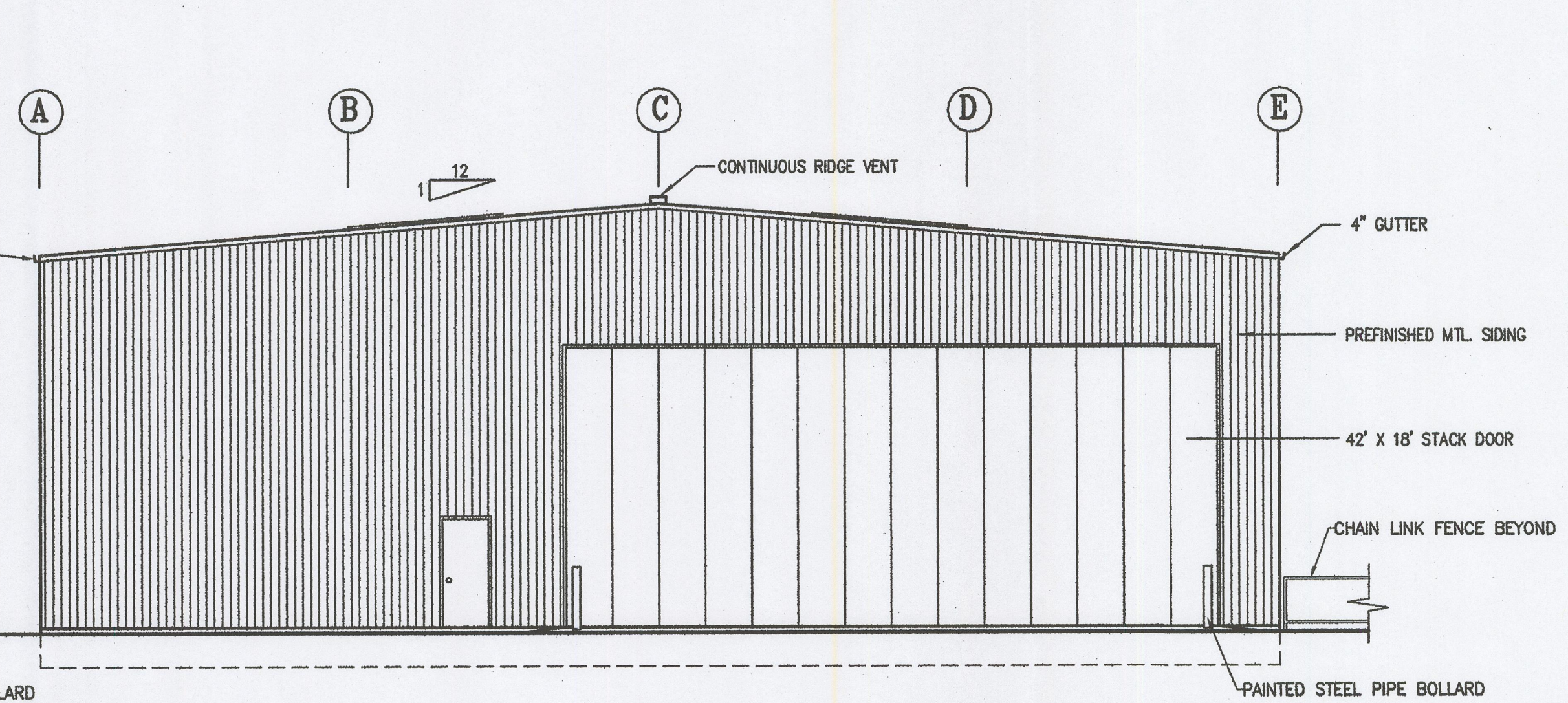
2 NORTH ELEVATION
SCALE 1/8" = 1'-0"



4 EAST ELEVATION
SCALE 1/8" = 1'-0"



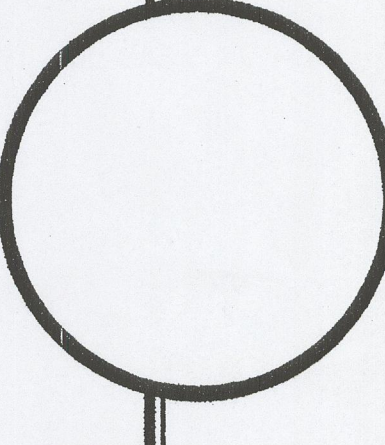
3 WEST ELEVATION
SCALE 1/8" = 1'-0"



1 SOUTH ELEVATION
SCALE 1/8" = 1'-0"

revisions

architects + llc
 environmental
 designers



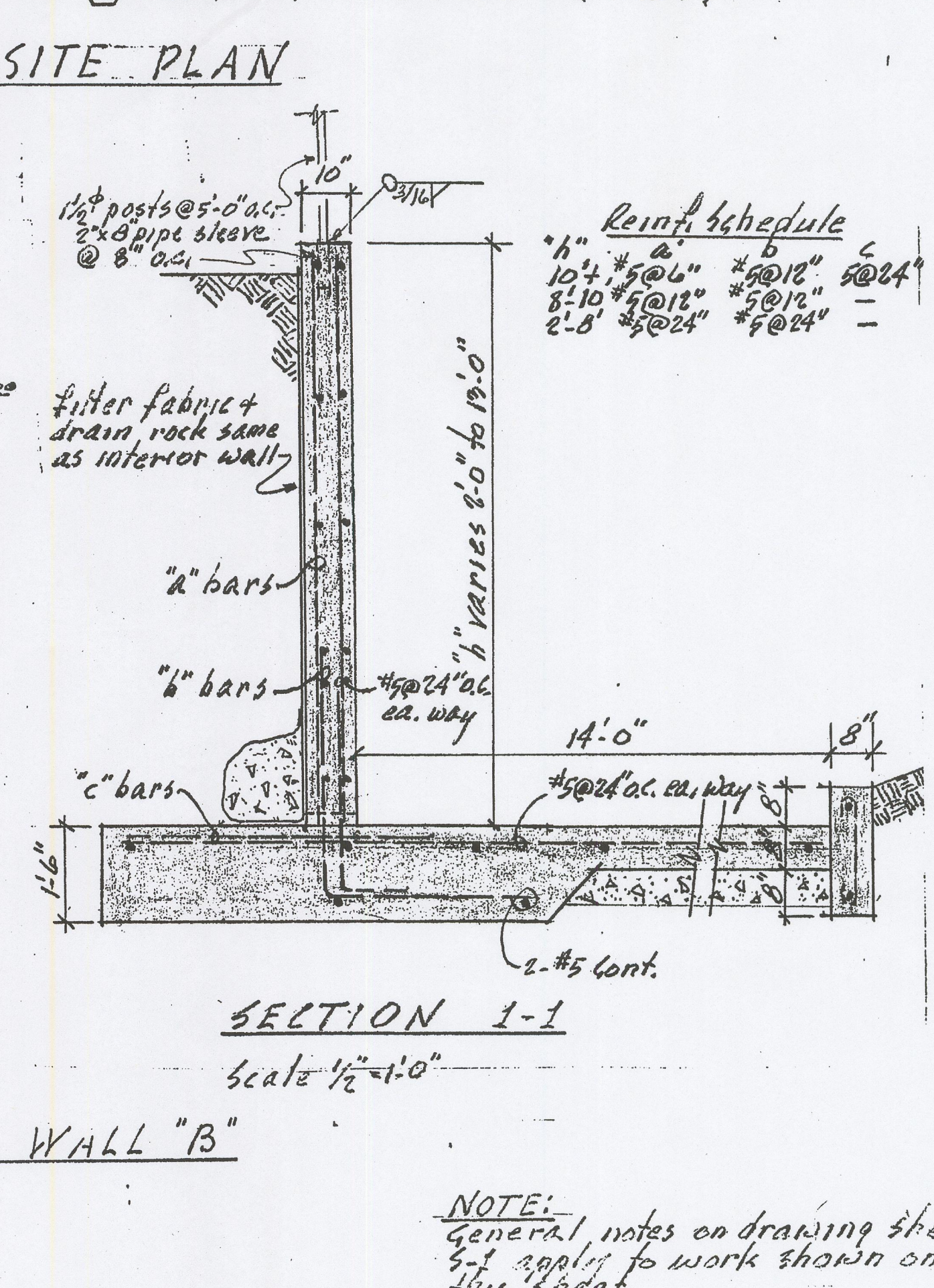
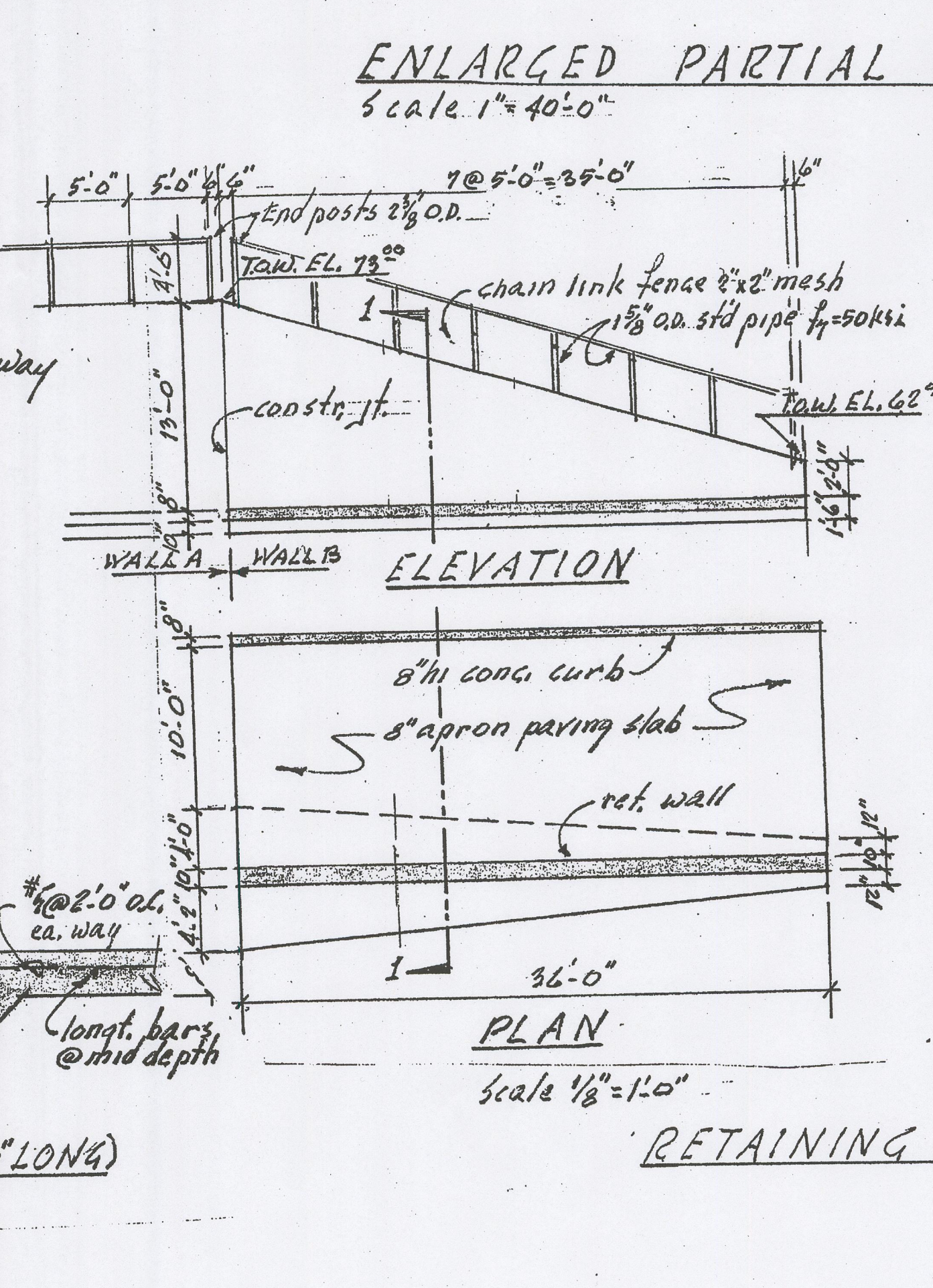
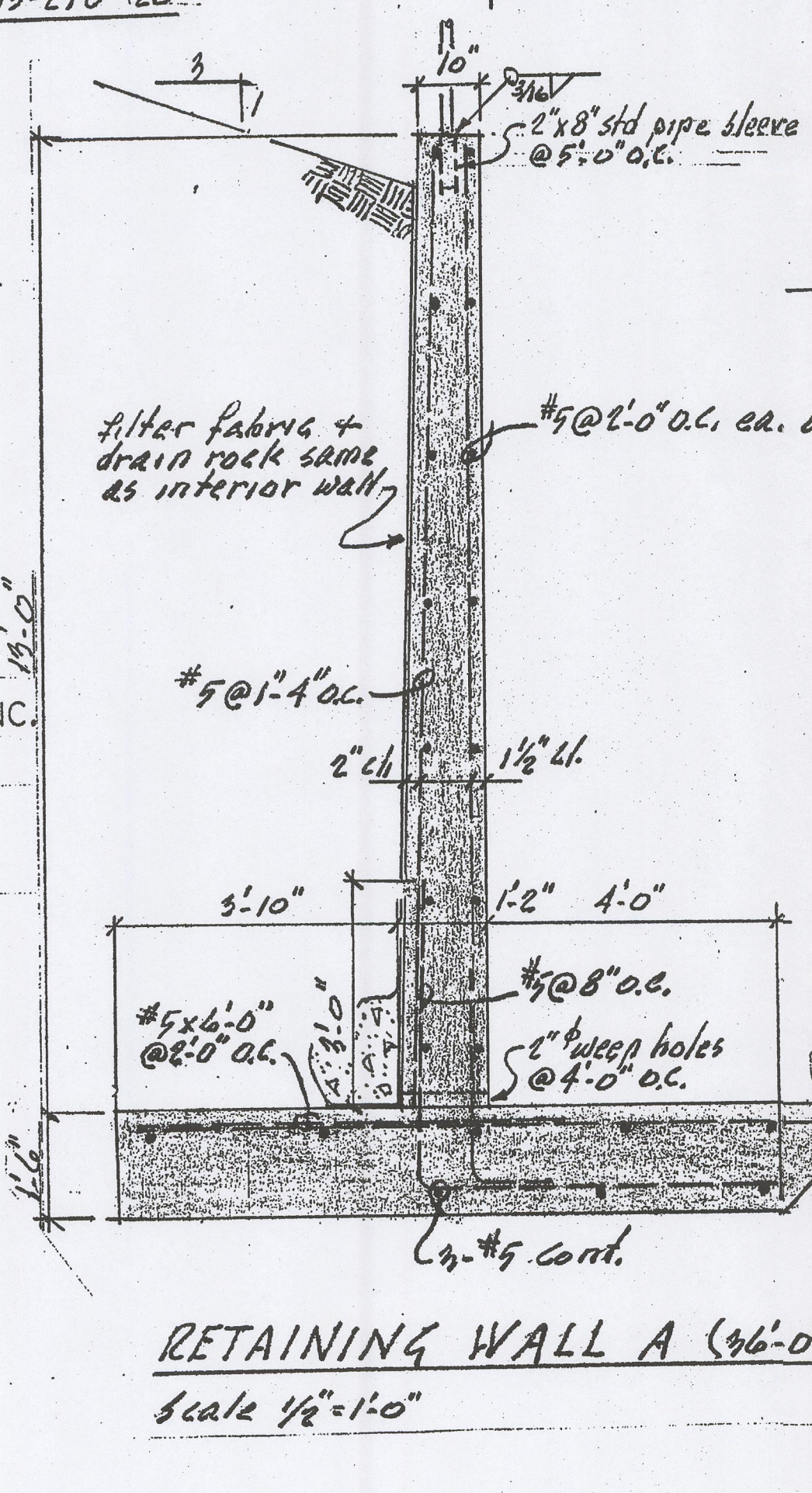
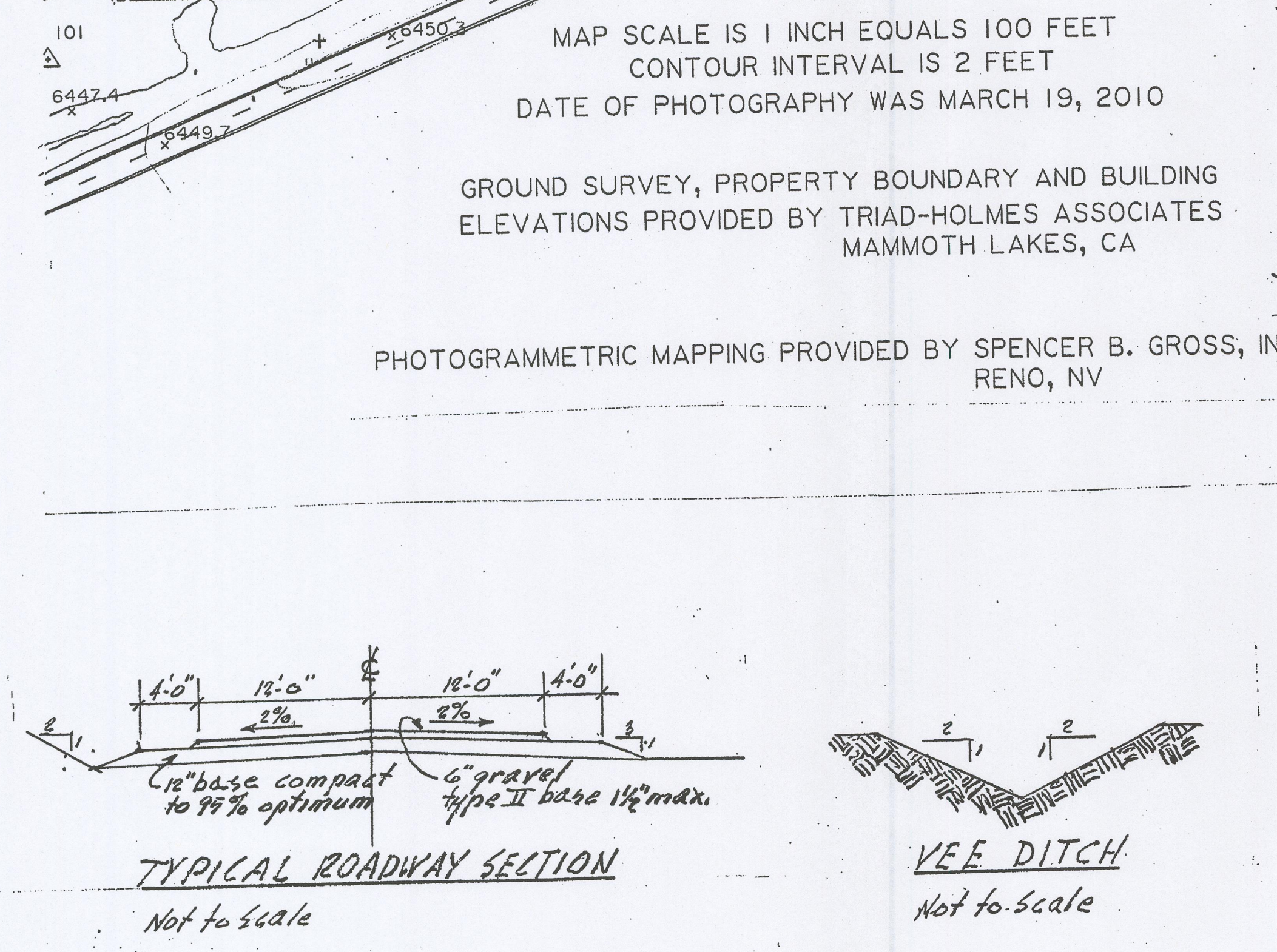
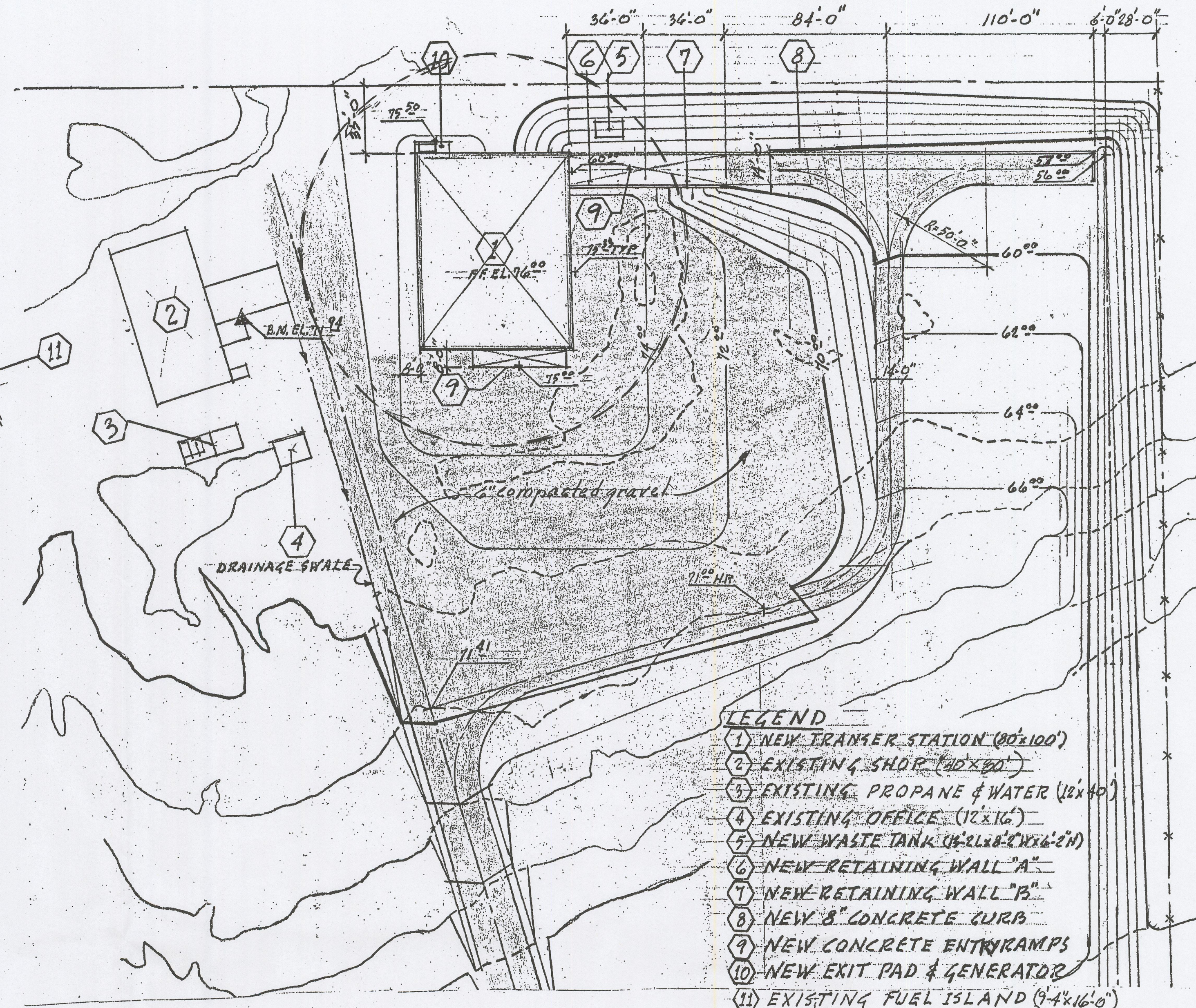
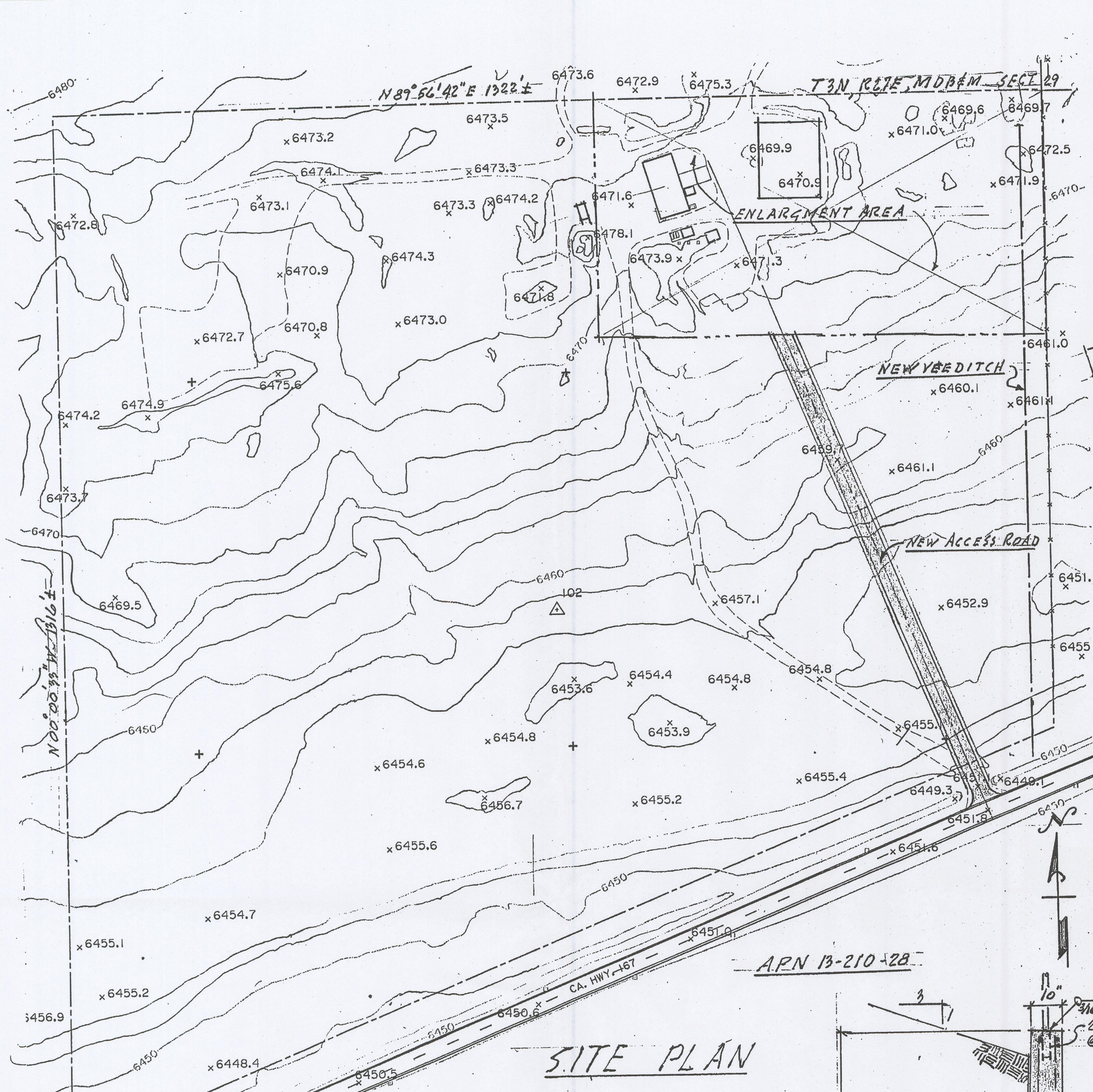
35 North St
 Mendocino, CA 95509
 Phone: 709-9800
 Fax: 775-329-8880

project
D & S WASTE REMOVAL
 Mono County Transfer Station
 Highway 167, Mile Post 8
 Mono County, California
 by Christman Construction, Inc.

sheet title
EXTERIOR ELEVATIONS

drawn by
 B.B.
 checked by
 GE
 date
 05/14/10
 job no.
 -
 sheet

A-6



revisions

JACK MEANS architects + LLC
 environmental designers
 35 North St.
 Reno, NV 89509
 775-329-8001
 FAX 775-329-8080

JACK MEANS
 CONSULTING ENGINEER
 2140 LAKERIDGE DR.
 RENO, NV 89509
 (775) 825-2873

project
D & S WASTE REMOVAL Station
 Mono County Transfer Station
 Highway 167, Mile Post 8
 Mono County, California
 by Christman Construction, Inc.

sheet title
SITE PLAN

drawn by
 B.B.

checked by
 GE

date
 05/07/10

job no.

sheet
C-1

D & S WASTE REMOVAL Mono County Transfer Station Highway 167, Mile Post 8 Mono County, California

ARCHITECTURAL

ARCHITECTS + LLC

35 MARTIN STREET
RENO, NEVADA 89509
PH. (775) 329-8001
FAX (775) 329-8080

STRUCTURAL

JACK MEANS, CONSULTING ENGINEER

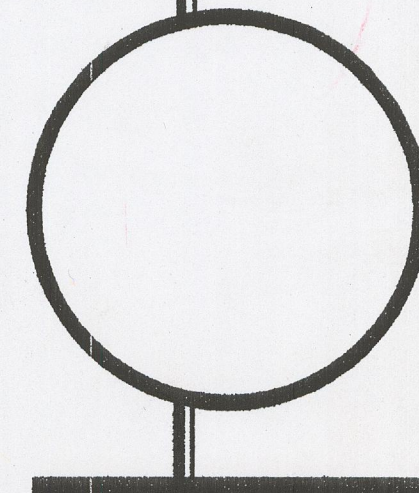
2140 LAKERIDGE DRIVE
RENO, NEVADA 89509
PH (775) 825-2873

revisions



architects + LLC
environmental
designers

35 Martin St.
Reno, NV 89509
775-329-8001
FAX 775-329-8080



Project
D & S WASTE REMOVAL
Mono County Transfer Station
Highway 167, Mile Post 8
Mono County, California
by Christman Construction, Inc.

sheet title
COVER SHEET

drawn by B.B.
checked by GE
date 05/14/10
job no. -
sheet

A-0