

A	Angle	F.D.	Floor Drain	PL	Plate
AL	At	F.F.	Flashing	PLAM	Plastic Laminate
CL	Centerline	F.E.C.	Fine Extinguisher Cabinet	PLAS	Plaster
D	Diameter or Round	F.H.C.	Fire Hose Cabinet	PLY	Plywood
L	Perpendicular	FIN	Finish	PL	Plastic
#	Pound or Number	FL	Floor	PT	Paint
∅	Existing	FLASH	Flashing	P.T.A.	Paper Towel Dispenser
ACOUS.	Acoustical	FLUOR.	Fluorescent	P.T.A./R	Combination Paper Towel Dispenser & Receptacle
A.B.	Area Drain	F.C.	Face of Concrete	PTM	Partition
A.D.J.	Adjustable	F.D.F.	Face of Finish	P.T.R.	Paper Towel Receptacle
AGGR.	Aggregate	F.D.S.	Face of Studs	Q.T.	Quarry Tile
AL	Aluminum	F.F.P.	Fireproof	R	Riser
APPROX.	Approximate	FT.	Foot or Feet	RAD.	Radius
ARCH.	Architectural	FTG.	Footing	R.D.	Roof Drain
ASB.	Asbestos	FUR.	Furring	REF.	Reference
ASPH.	Asphalt	FUT.	Future	REFC.	Refrigerator
B	Board	GA	Gauge	REG.	Register
BITUM.	Bituminous	GA.V.	Galvanized	REIN.	Reinforced
B.L.D.G.	Building	G.B.	Grab Bar	RES.	Resilient
BLK.	Block	GL	Glass	RESIL.	Resilient
BLKG.	Blocking	GRD.	Ground	R.O.	Room
BN.	Bean	GR.	Grade	R.O.L.	Rough Opening
BOT.	Bottom	GYP.	Gypsum	R.W.L.	Rain Water Leader
CAB.	Cabinet	H.B.	Hose Bib	S.	South
C.B.	Catch Basin	H.C.	Hollow Core	S.C.	Solid Core
CEM.	Cement	H.W.D.	Hardwood	S.C.D.	Seat Cover Dispenser
CER.	Ceramic	H.W.H.	Hardware	SCHED.	Schedule
C.I.	Cast Iron	H.M.	Hollow Metal	S.D.	Soap Dispenser
C.L.G.	Ceiling	HR.	Horizontal	SECT.	Section
C.L.S.	Ceiling	HGT.	Height	SH	Shelf
C.L.D.	Close	I.D.	Inside Diameter (In.)	SHR.	Shower
C.L.R.	Clear	INSUL.	Insulation	SHT.	Sheet
C.NTR.	Counter	INT.	Interior	S.M.D.	Sanitary Napkin Dispenser
C.C.	Column	JAN.	Janitor	S.M.R.	Sanitary Napkin Receptacle
CONC.	Concrete	J.T.	Joint	SPEC.	Specification
CONN.	Connection	KIT.	Kitchen	SQ.	Square
CONSTR.	Construction	LAB.	Laboratory	SST.	Stainless Steel
CONT.	Continuous	LAM.	Laminate	S.S.V.	Service Sink
CORR.	Corridor	LAV.	Lavatory	STA.	Station
CTR.	Center	LCK.	Locker	STL.	Standard
C.T.S.K.	Countersunk	L.T.	Light	STL.	Steel
DBL.	Double	LAX.	Maximum	STOR.	Storage
DEPT.	Department	M.C.	Medicine Cabinet	STR.	Structural
D.F.	Drinking Fountain	MECH.	Mechanical	STR.L.	Structural
DIA.	Diameter	MEMB.	Membrane	SUSP.	Suspended
DISP.	Dispenser	MET.	Metal	SYN.	Symmetrical
DN.	Down	MFR.	Manufacturer	T & G	Tongue and Groove
D.O.	Door Opening	M.H.	Manhole	T.B.	Towel Bar
DR.	Door	M.L.	Mullion	T.C.	Top of Curb
D.S.	Downspout	M.M.	Miscellaneous	TEL.	Telephone
D.S.P.	Dry Standpipe	M.H.	Manhole	TER.	Terrazzo
DWG.	Drawing	M.N.	Minimum	TK.	Thickness
D.W.R.	Drawer	M.R.	Mirror	TP.	Top of Pavement
E	East	MISC.	Miscellaneous	T.P.A.	Toilet Paper Dispenser
E.A.	Each	M.S.	Masonry	TR.	Tread
E.J.	Expansion Joint	M.B.	Mounted	T.V.	Top of Wall
E.L.	Elevation	M.L.	Mullion	TYP.	Typical
ELEC.	Electrical	N	North	UNF.	Unfinished
ELEV.	Elevator	N.C.	Not in Contract	UNID.	Unless Otherwise Noted
EMER.	Emergency	N.L.V.#	Number	UR.	Urinal
ENCL.	Enclosure	NOM.	Nominal	VERT.	Vertical
EP.	Electrical Panelboard	N.T.S.	Not To Scale	VEST.	Vestibule
E.Q.	Equal	O.A.	Overall	V	Vest
E.Q.P.T.	Equipment	OBS.	Obscure	V/V	Vest with
E.V.C.	Electric Water Cooler	O.C.	On Center	V.C.	Water Closet
EXP.	Expansion	O.D.	Outside Diameter (In.)	V.D.	Wood
EXPD.	Exposed	O.P.	Opening	V/W	Without
EXT.	Existing	O.P.P.	Opposite	V.P.	Waterproof
EXT.	Exterior	O.P.P.	Opposite	V.SCT.	Valscot Weight
F.A.	Fire Alarm	PRCST.	Pre-Cast	VT.	Weight
F.B.	Flat Bar				

### Abbreviations

5

Structural Metal	[Symbol]	Acoustical Tile	[Symbol]
Glass	[Symbol]	Hardboard	[Symbol]
Brick	[Symbol]	Wood Framing Interrupted Member	[Symbol]
Concrete Block	[Symbol]	Wood Framing Continuous Member	[Symbol]
Concrete	[Symbol]	Wood Finished	[Symbol]
Batt/Basket or Sound Insulation	[Symbol]	Earth	[Symbol]
Gypsum Board	[Symbol]	Gravel	[Symbol]
Rigid Insulation	[Symbol]		
Plywood	[Symbol]		

### Materials

4

### Symbols

3

### Symbols

3

### Project Information & Basis of Design

3

GOVERNMENTAL JURISDICTION	MONO COUNTY
PROJECT ADDRESS	Highway 167, Mile Post 8
ASSESSORS PARCEL NUMBER	13-210-28
TYPE OF CONSTRUCTION	II-B
TYPE OF OCCUPANCY	TYPE F1
BUILDING AREA	9,440 SF
ALARM PROVISIONS	NO
SECURITY	NO
FIRE DETECTORS	NO
SMOKE DETECTORS	NO
SPRINKLER SYSTEM	NO
Building Codes Used:	
IBC	2006
UPC	2006
UMC	2006
NEC	2008
ANSI	2003

### Project Information & Basis of Design

3

### ARCHITECTURAL

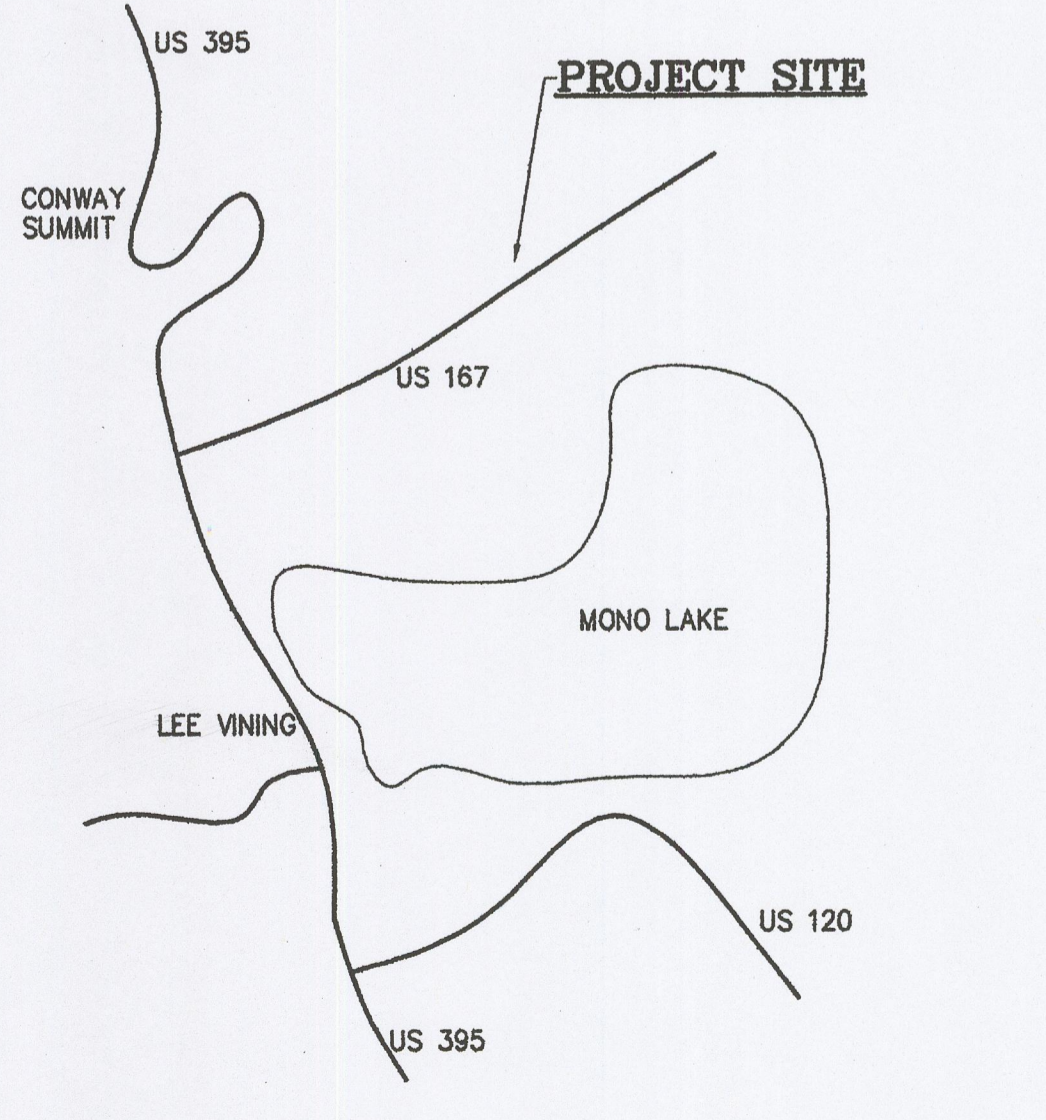
A-0	COVER SHEET
A-0.1	ABBREVIATIONS, SHEET INDEX, PROJECT INFO.
C-1	SITE PLAN
A-2	MAIN FLOOR & LOWER LEVEL PLANS
A-3	BUILDING SECTIONS
A-4	ROOF PLAN
A-5	LIGHTING PLANS
A-6	EXTERIOR ELEVATIONS

### STRUCTURAL

S-1	GENERAL NOTES & DETAILS
S-2	FOUNDATION PLANS
S-3	FOUNDATION DETAILS
S-4	FOUNDATION DETAILS

### Sheet Index

2



### Vicinity Map

1

C:\DWG\Christmasman\CONST\DOCTA-0.dwg, 5/11/2010 8:02:16 AM, INSTATION3\HP Design\let 750C+ (E\AO) by HP (Copy 1)

revisions

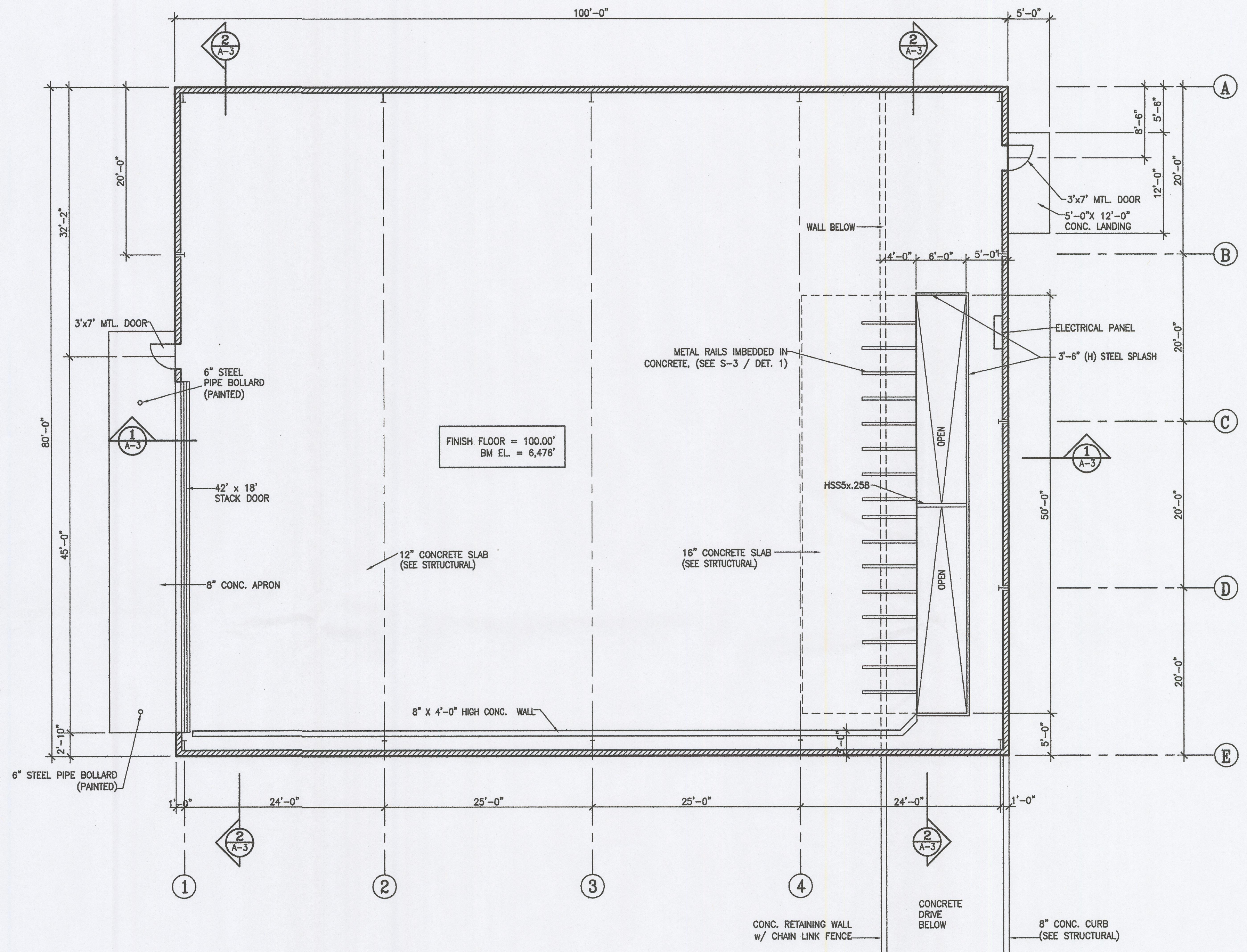
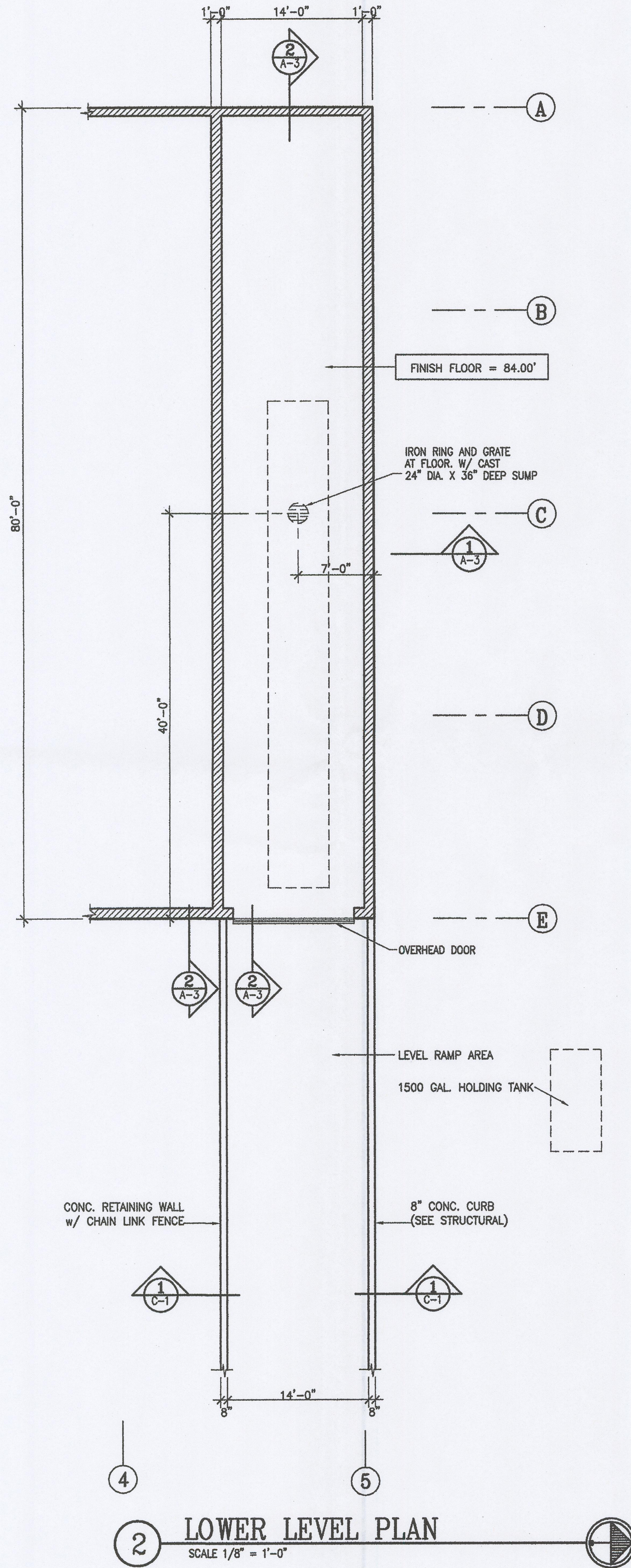
**architects + llc**  
environmental designers  
95 Martin St  
Berkeley, CA 94709  
Phone: 925-861-8001  
Fax: 925-861-8080

project: **D & S WASTE REMOVAL, Mono County Transfer Station Highway 167, Mile Post 8 Mono County, California**

sheet title: **ABBREVIATIONS & SYMBOLS**

drawn by	B.B.
checked by	GE
date	05/14/10
job no.	
sheet	A-0.1

C:\DWG\Christman\CONST DOCT\Building Plans.dwg, 5/11/2010 8:42:53 AM, Auto HP DesignJet 750C\_ (E\_AD) by HP (Copy 1) on STATION3aaaaaa.ppc3



revisions

**architects + LLC**  
environmental designers  
35 Martin St.  
Reno, NV 89509  
775-369-8800  
FAX 775-369-8060

**PROJECT**  
D & S WASTE REMOVAL  
Mono County Transfer Station  
Highway 167, Mile Post 8  
Mono County, California  
by Christman Construction, Inc.

**sheet title**  
MAIN FLOOR PLAN  
LOWER LEVEL PLAN

**drawn by**  
B.B.

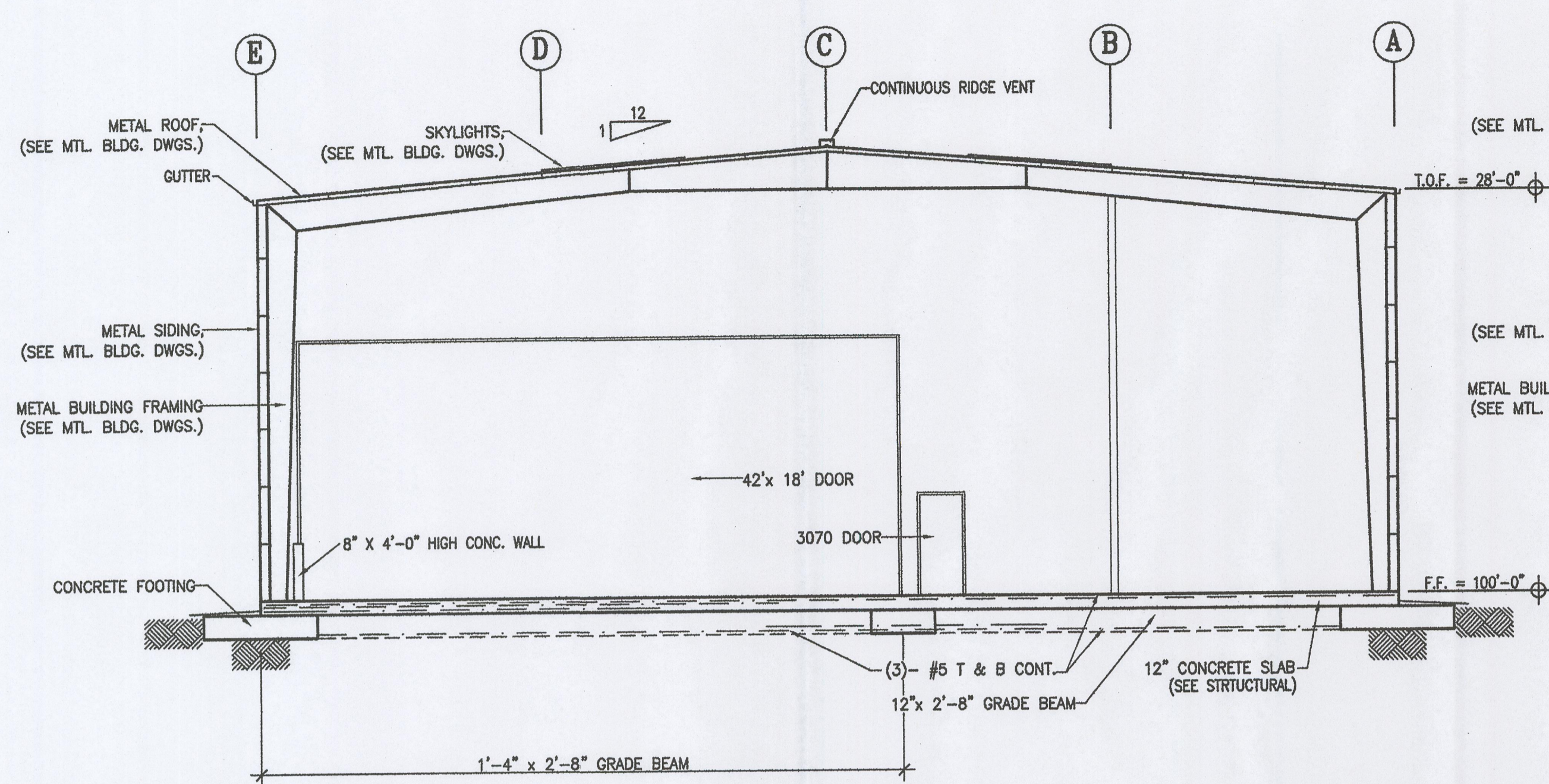
**checked by**  
GE

**date**  
05/14/10

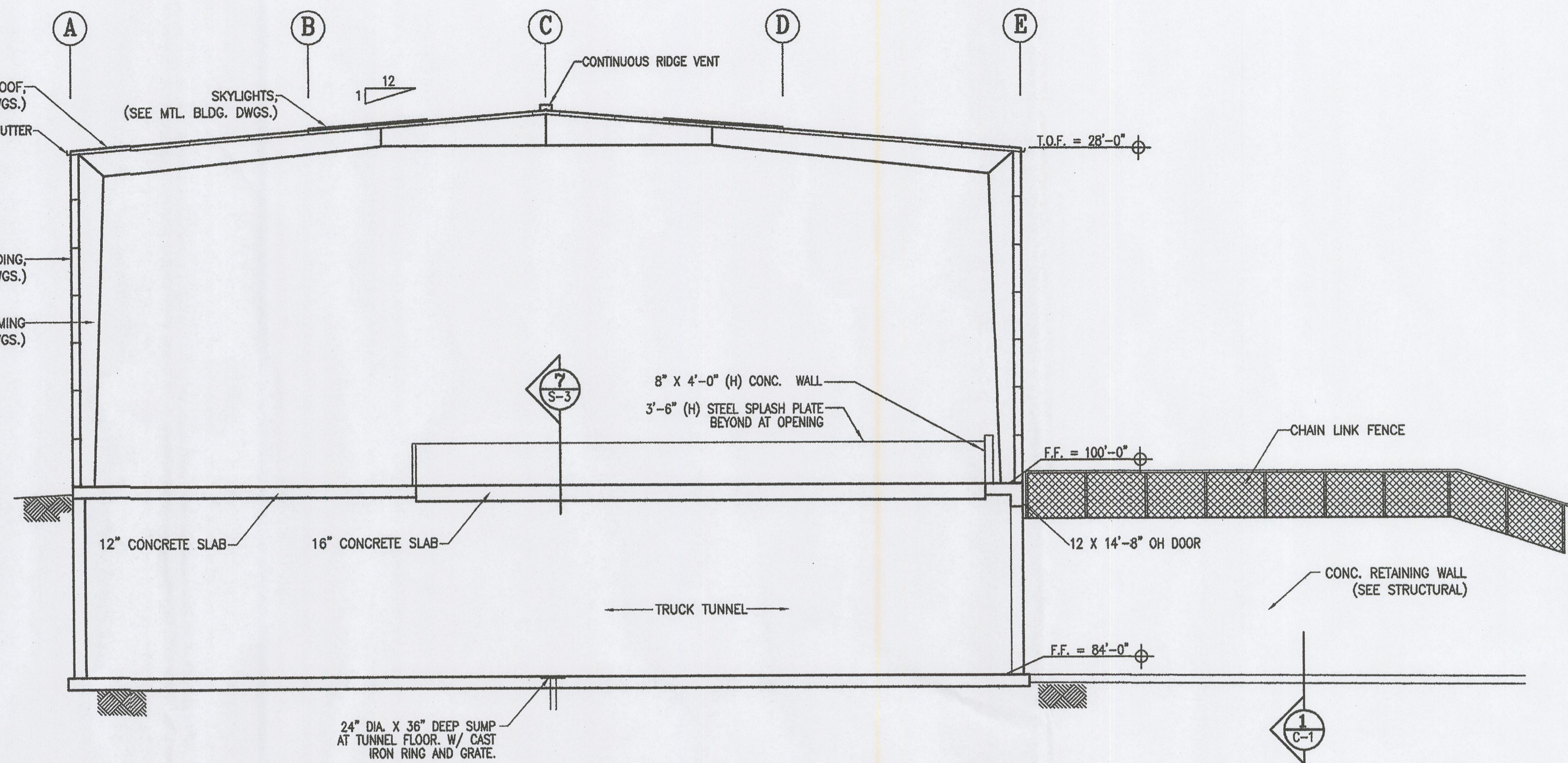
**job no.**

**sheet**  
A-2

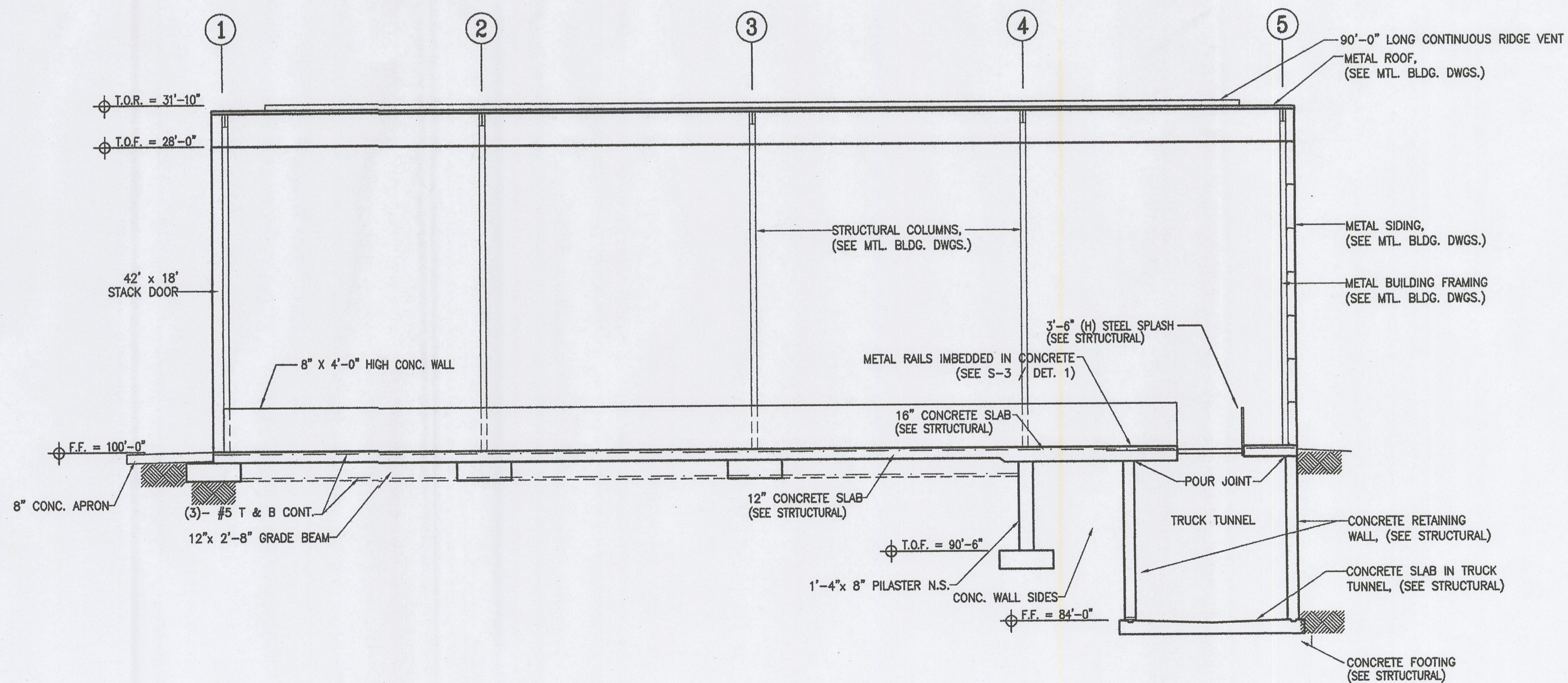
C:\DWG\Christman\CONST DOCT\Building Sections.dwg, 5/11/2010 9:00:10 AM, Auto HP Designer 750C (E\_A0) by HP (Copy 1) on STATION8aataaataa.pcb



**3 BUILDING SECTION**  
SCALE 1/8" = 1'-0"



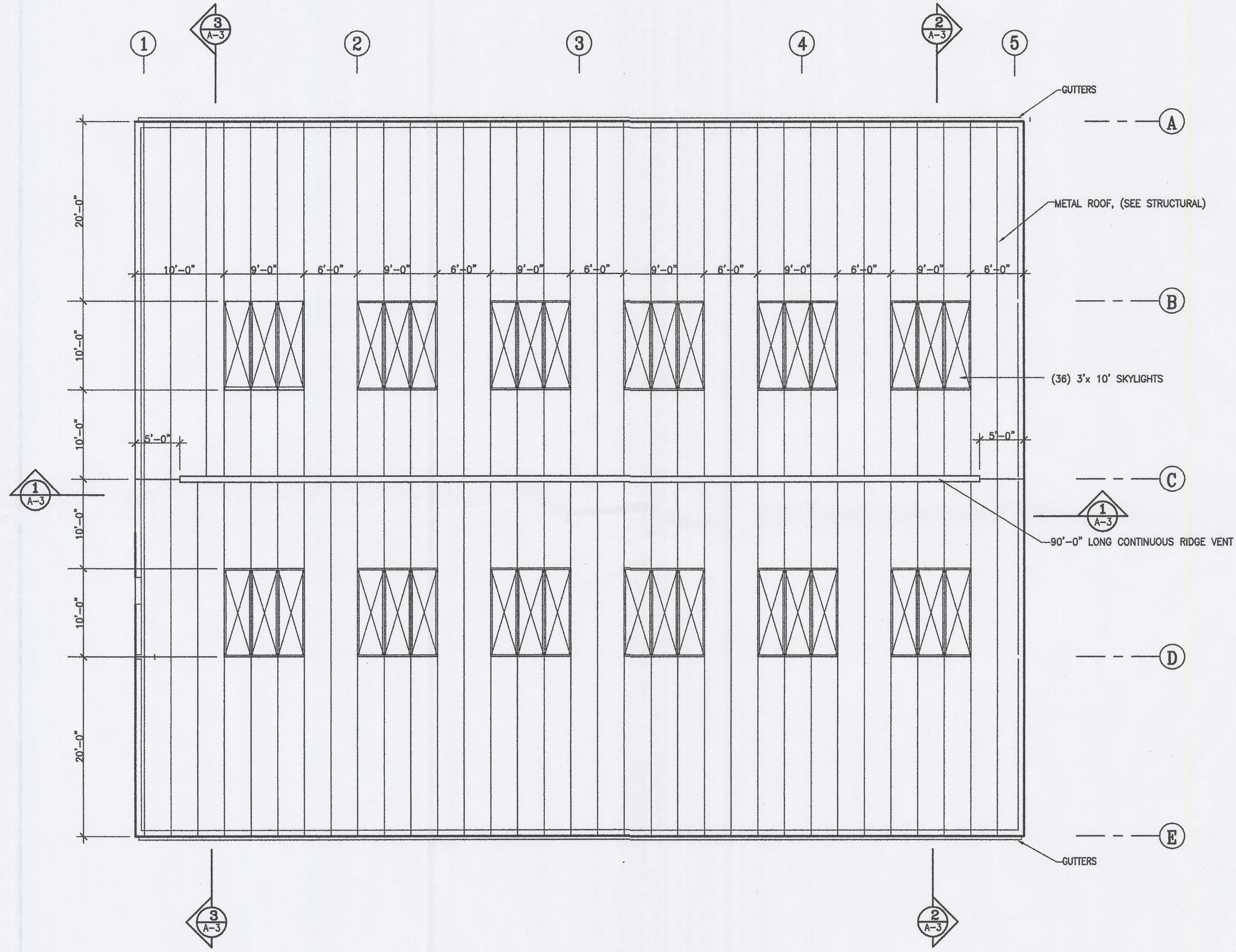
**2 BUILDING SECTION**  
SCALE 1/8" = 1'-0"



NOTE: SEE STRUCTURAL FOR FOOTINGS, SLABS, CONC. NOTES, AND SCHEDULES.

**1 BUILDING SECTION**  
SCALE 1/8" = 1'-0"

revisions
<b>architects + LLC</b> environmental designers 95 North St. Reno, NV 89509 775-329-8001 FAX 775-329-8888
project <b>D &amp; S WASTE REMOVAL</b> <b>Mono County Transfer Station</b> <b>Highway 167, Mile Post 8</b> <b>Mono County, California</b> by Christman Construction, Inc.
sheet title <b>BUILDING SECTIONS</b>
drawn by B.B.
checked by GE
date 05/14/10
job no. -
sheet <b>A-3</b>



1 ROOF PLAN  
SCALE 1/8" = 1'-0"

revisions

**architects + llc**  
environmental designers  
35 North St.  
Reno, NV, 89509  
775-329-8001  
FAX 775-329-8080

Project  
**D & S WASTE REMOVAL**  
Mono County Transfer Station  
Highway 167, Mile Post 8  
Mono County, California  
by Christman Construction, Inc.

sheet title  
ROOF PLAN

drawn by  
B.B.  
checked by  
GE  
date  
05/14/10  
job no.  
-  
sheet

A-4