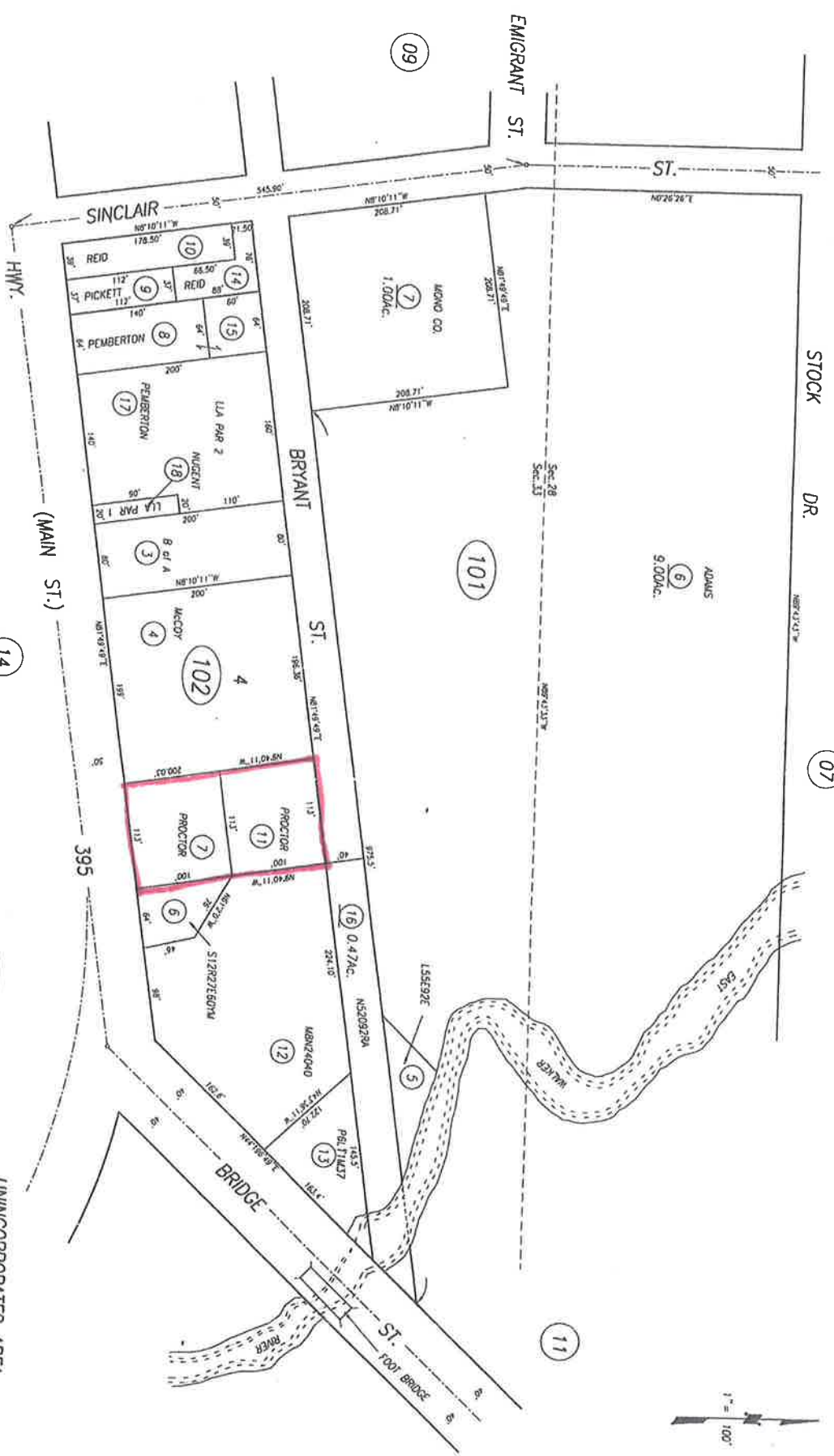


POR. SECS. 28 & 33, T.5N., R.25E., M.D.B.&M.

Tax Rate Area
51-07

8-10



P.M. 32-41, Bk. 4, Pg. 43, (08-101-06&07)
M.B. 1-18, BRIDGEPORT TOWNSITE

Note: This map is prepared for the use of the Mono County Assessor, and is not intended to be used for any other purpose. The Assessor's Office is not responsible for any errors or omissions in this map, and the Assessor's Office is not liable for any damages resulting from the use of this map.

UNINCORPORATED AREA
Mono County Assessor's Map
Assessor's Block Numbers Shown in Dashed
Assessor's Parcel Numbers Shown in Solid
REDRAWN P. Eberhart REVISED 2-26-1999
FILE NAME Bk4Pg10 Mono County Assessor's Office



To see all the details that are visible on the screen, use the "Print" link next to the map.



HISTORIC

Bryant st

Ice sales

RV dumping station

Residential/unit

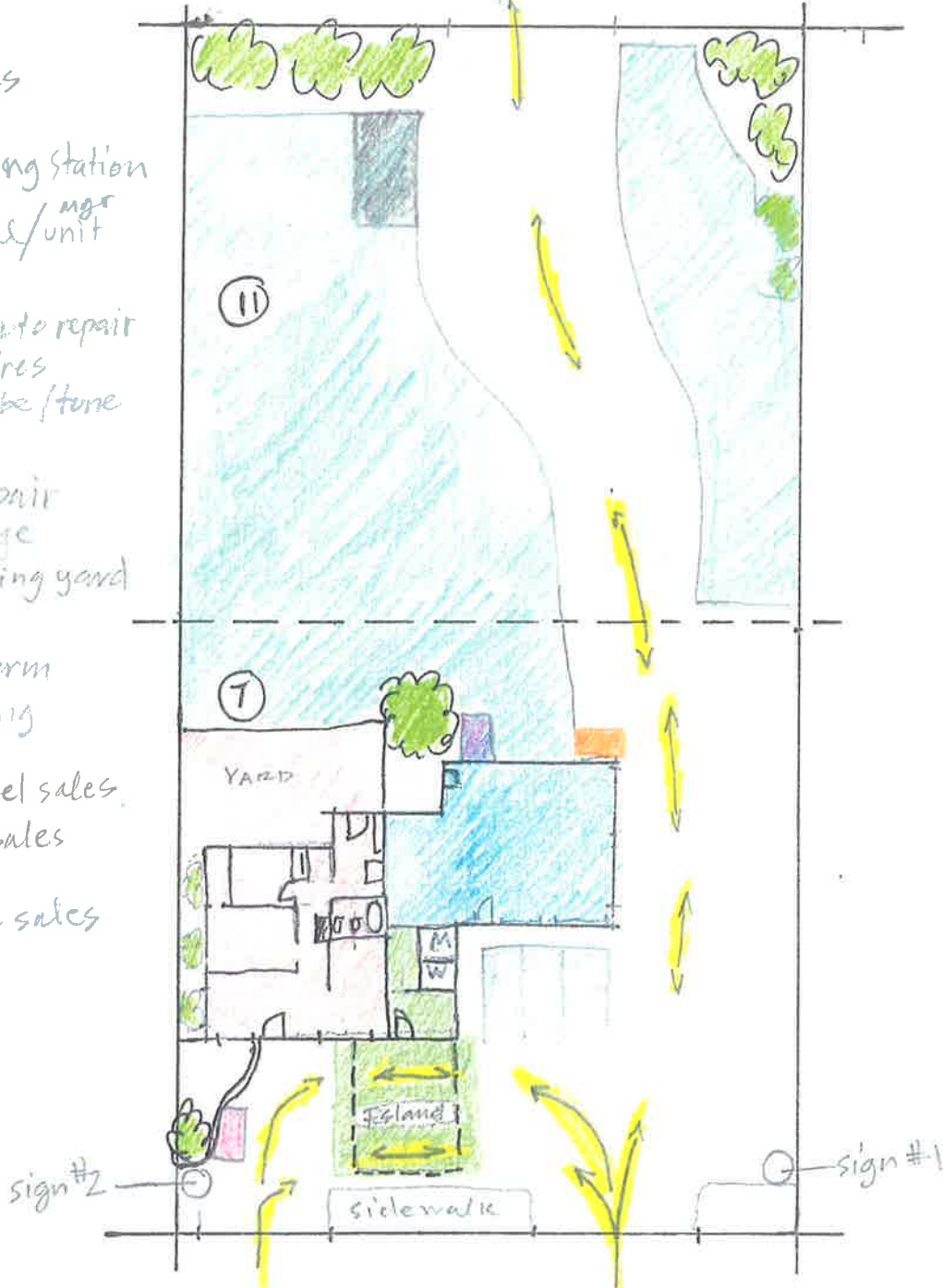
garage - auto repair
tires
lube/tune

auto repair
storage
wrecking yard

short term
parking

gas/diesel sales
retail sales

Propane sales



US 395

PROPOSED

Bryant st

outside special events area

residential mgr init / B&B? Bunks?

workshop art studio storage rental Fleet

primary retail space

long term parking / storage Fleet parking / RC play area

short term parking

Mobile Food (coffee cart)

rental product display

sign #2

sidewalk

113'

access

sign #1

US 395

