



June Lake Loop ATP

June Lake Citizens Advisory Committee Meeting

August 3, 2022

Project Team and Funding

- Mono County Local Transportation Commission
- CivicWell
- KTUA
 - Central Coast Transportation Consulting



Grant Funded Project —
Caltrans Sustainable Communities Grant

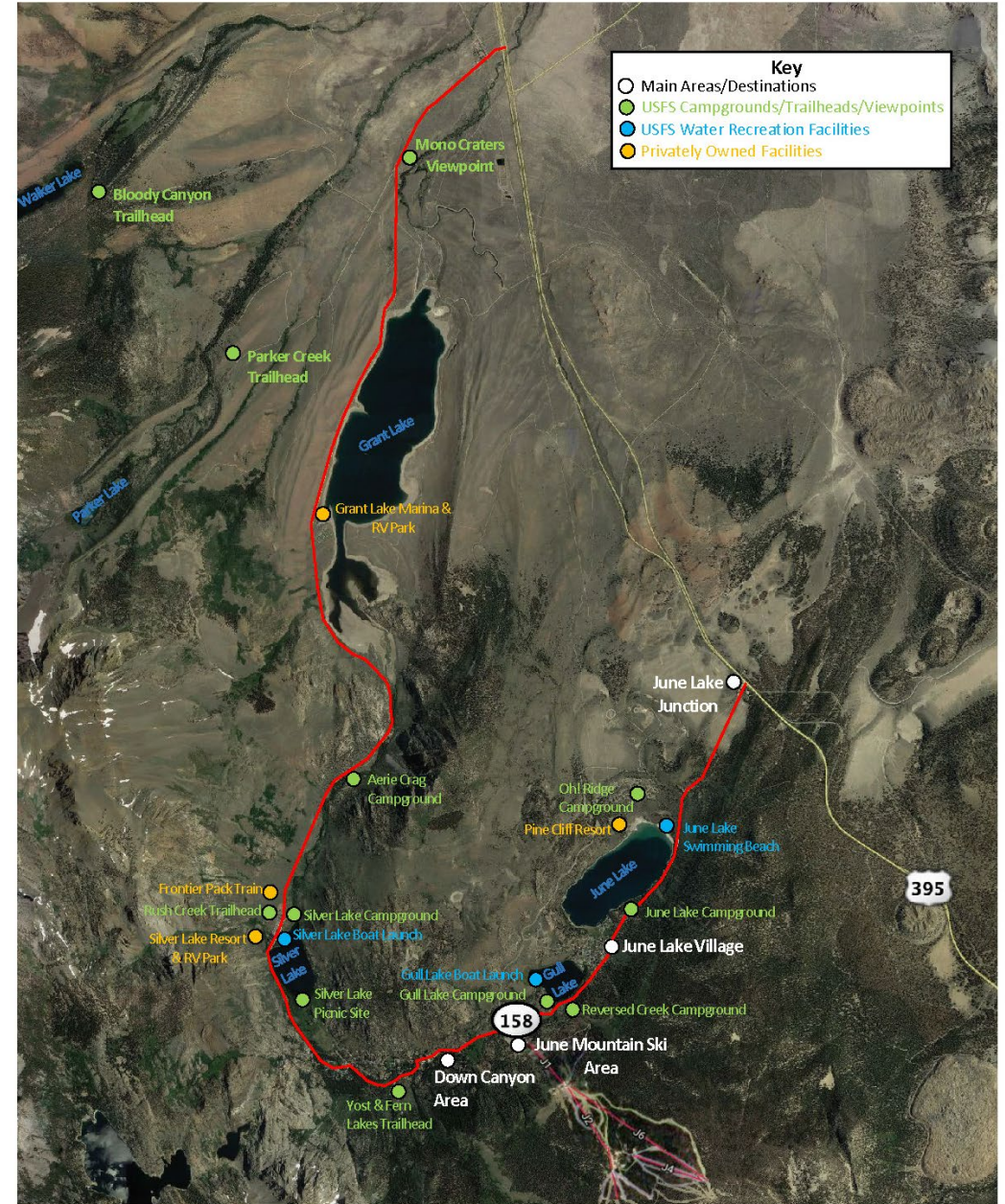
Goals of the ATP

- Identify gaps in the active transportation network around the Loop
 - ✓ Sidewalks, curb ramps, crosswalks, bikeways, transit stops, etc.
- Assess collision data (location and type of crash) and other datasets important to the unique characteristics of the SR 158
- Engage with community members and stakeholders
- Develop list of infrastructure and non-infrastructure project recommendations
- Present final Plan to Mono County Local Transportation Commission

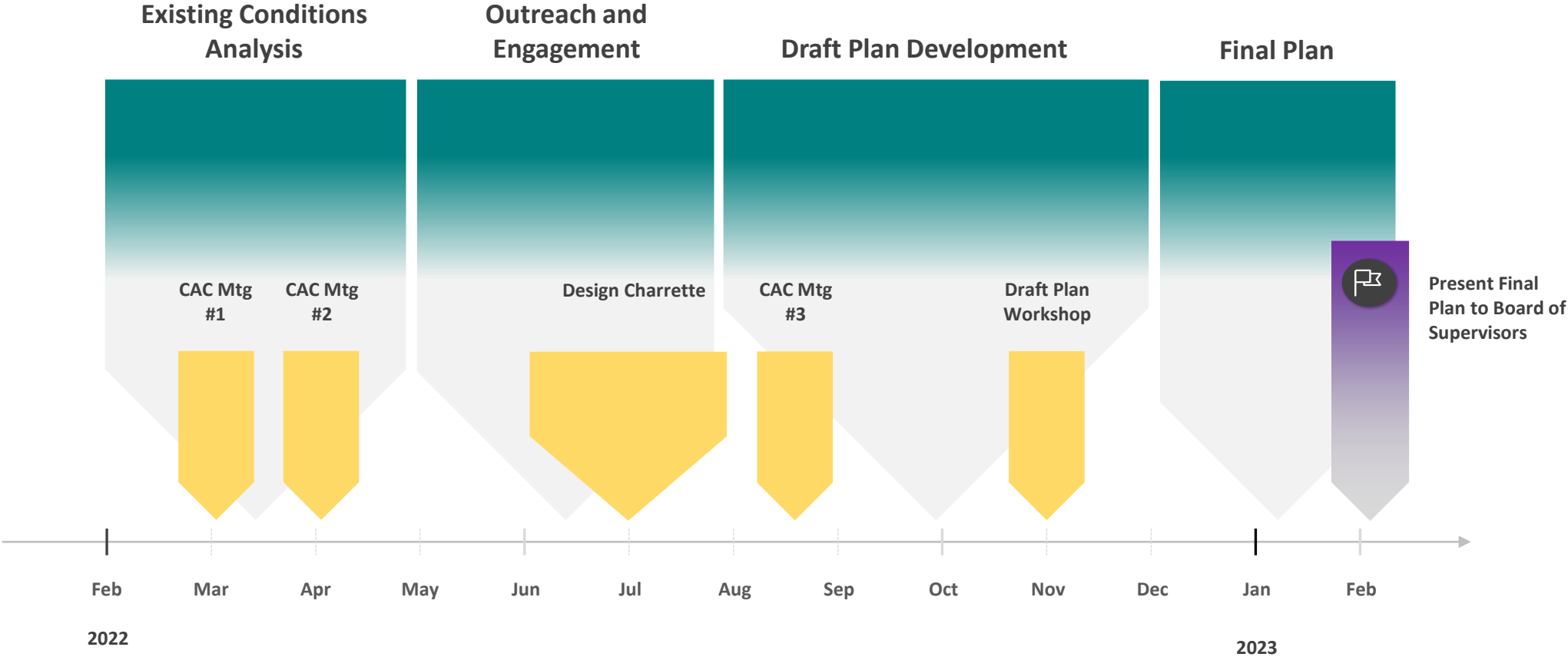
Project Area Map

- State Route 158
- Connect to major destinations such as:
 - June Lake Beach
 - June Lake Village businesses and community spaces; Gull Lake
 - June Mountain Ski Area
 - Resorts and lodging between Silver Lake and Gull Lake (Down Canyon)
 - Silver Lake resort and campgrounds and Grant Lake Marina and campgrounds

June Lake Loop (SR 158) Project Area Map



ATP Timeline



Unique Characteristics to Consider



- Topographic changes along the loop
- Available right-of-way
- Seasonal changes
 - Population influxes
 - Highly cyclical tourism-based economy
 - Maintenance of facilities
 - Hazards
- Rural neighborhood characteristics
- Natural setting and scenic resources i.e.
 - Tree cover and vegetation
 - Viewpoints and points of interest
- Jurisdictional agencies (Caltrans vs County vs U.S. Forest Service)

Site Visits & Walking Tours with Mono County



Site Visits & Walking Tours with Mono County



Project Survey and Online Map in Progress

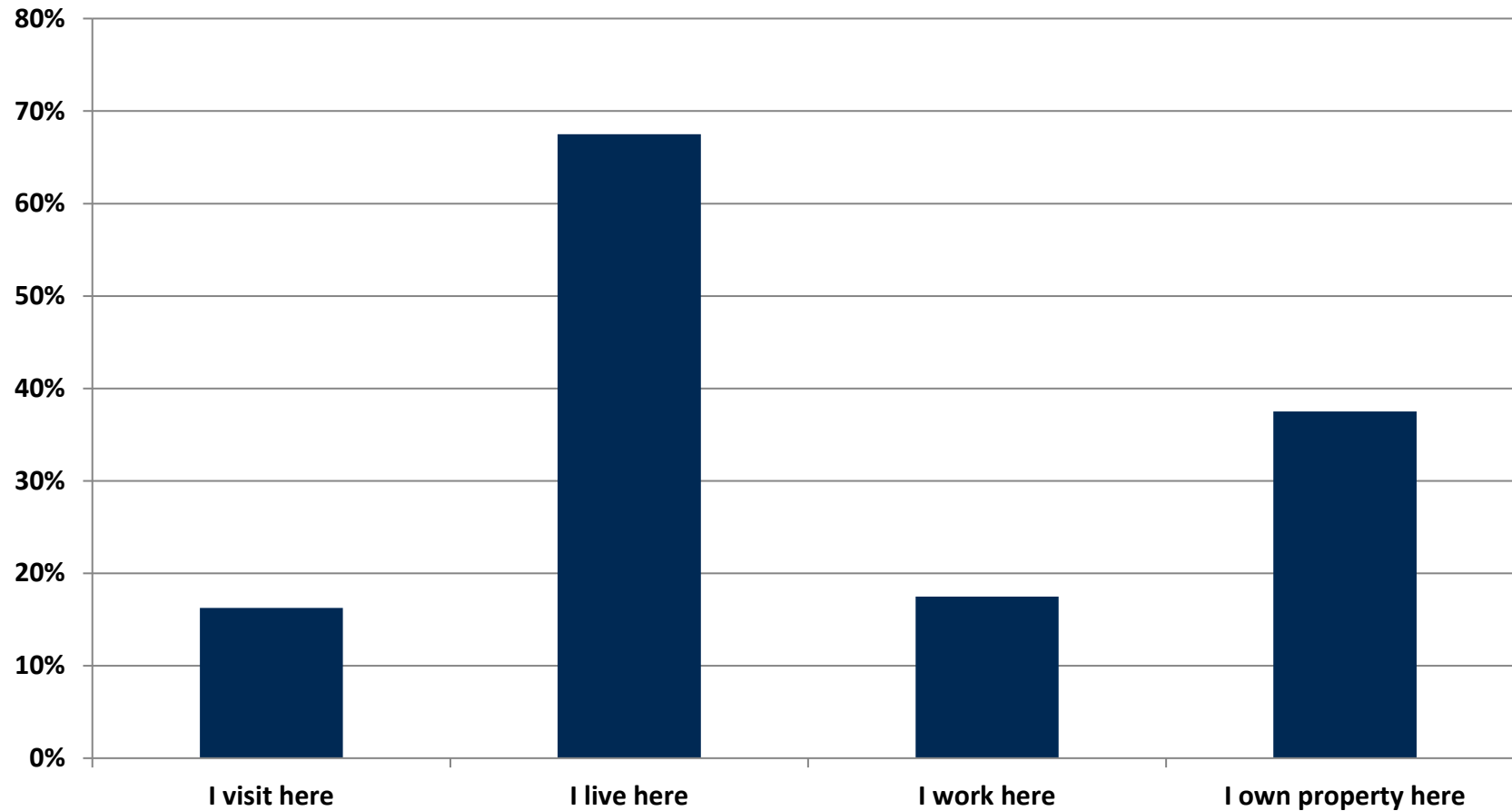


- Public survey released in June 2022
 - ✓ 80 completed surveys to-date
 - ✓ Will remain open through the end of Summer 2022
 - ✓ Survey results will help the planning team make informed decisions for the recommendations phase
- Online interactive map available for commenting
 - ✓ <https://junelakeatp-ktuagis.hub.arcgis.com/>
 - ✓ Will remain open through the end of Summer 2022
 - ✓ Mapping results will help the planning team make informed decisions for the recommendations phase

Project Survey in Progress



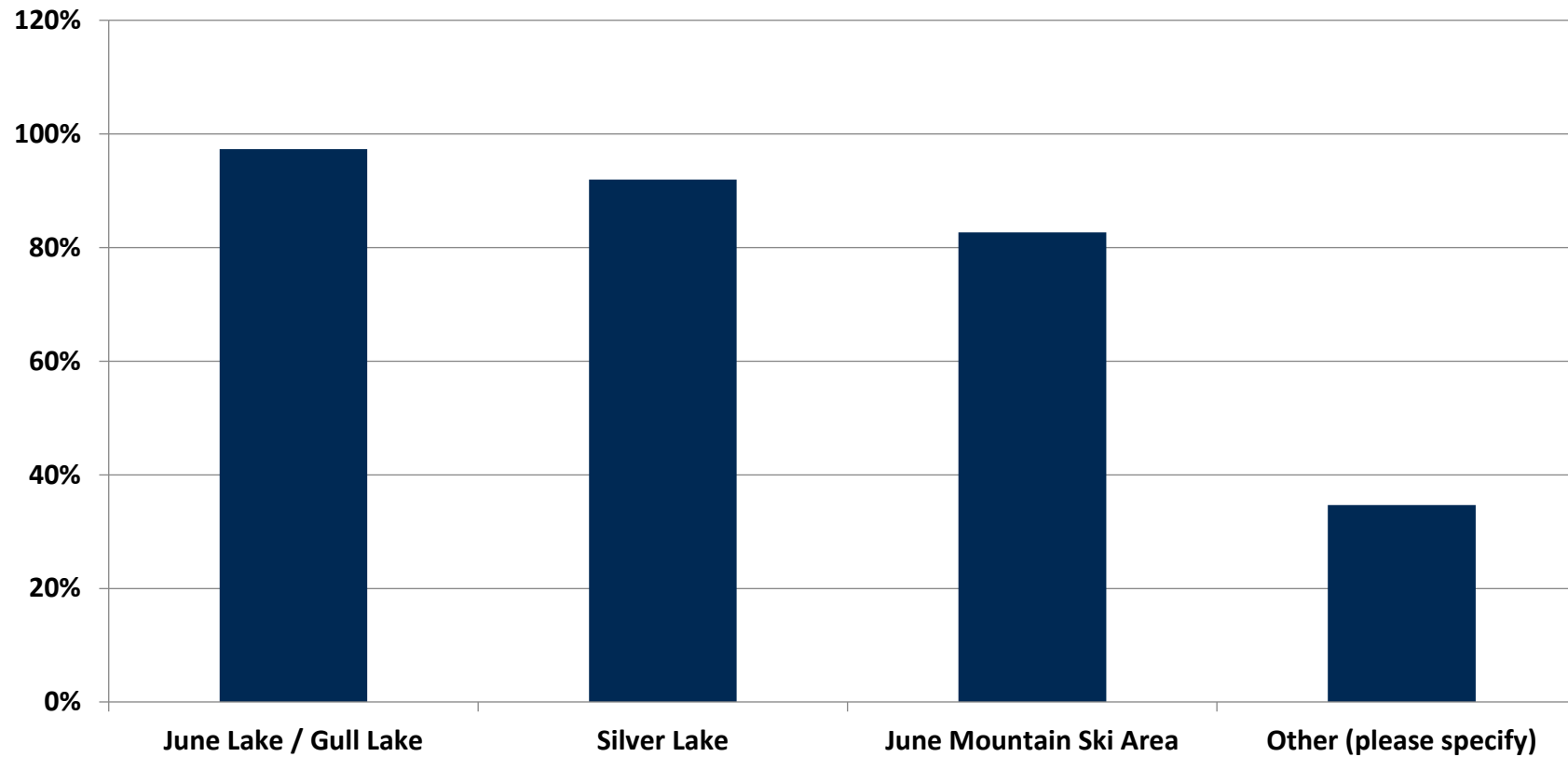
Q1: How would you best describe your relationship with the June Lake Loop? (Check all that apply)



Project Survey in Progress



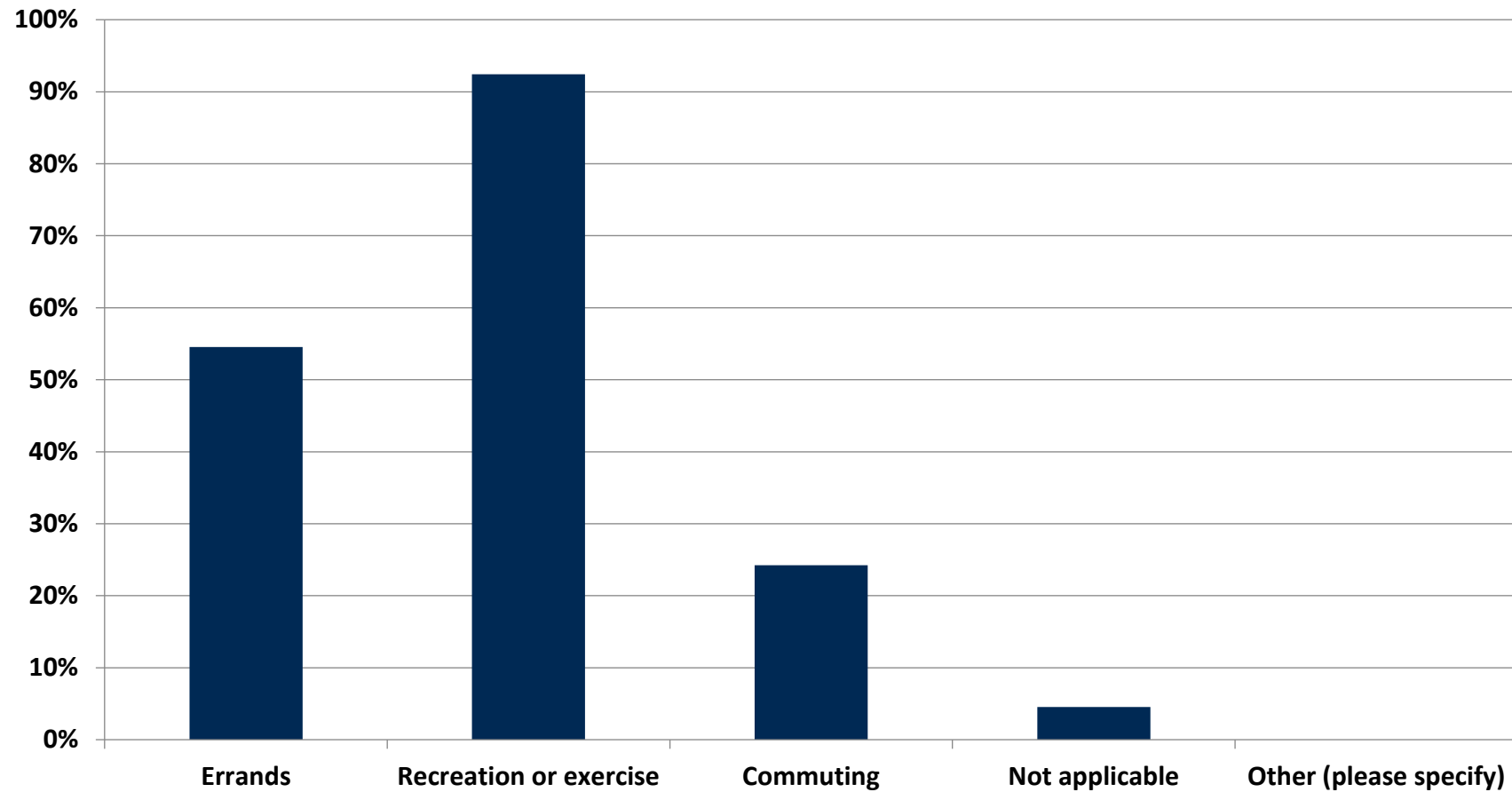
Q11: What areas do you visit along the June Lake Loop? (Check all that apply)



Project Survey in Progress



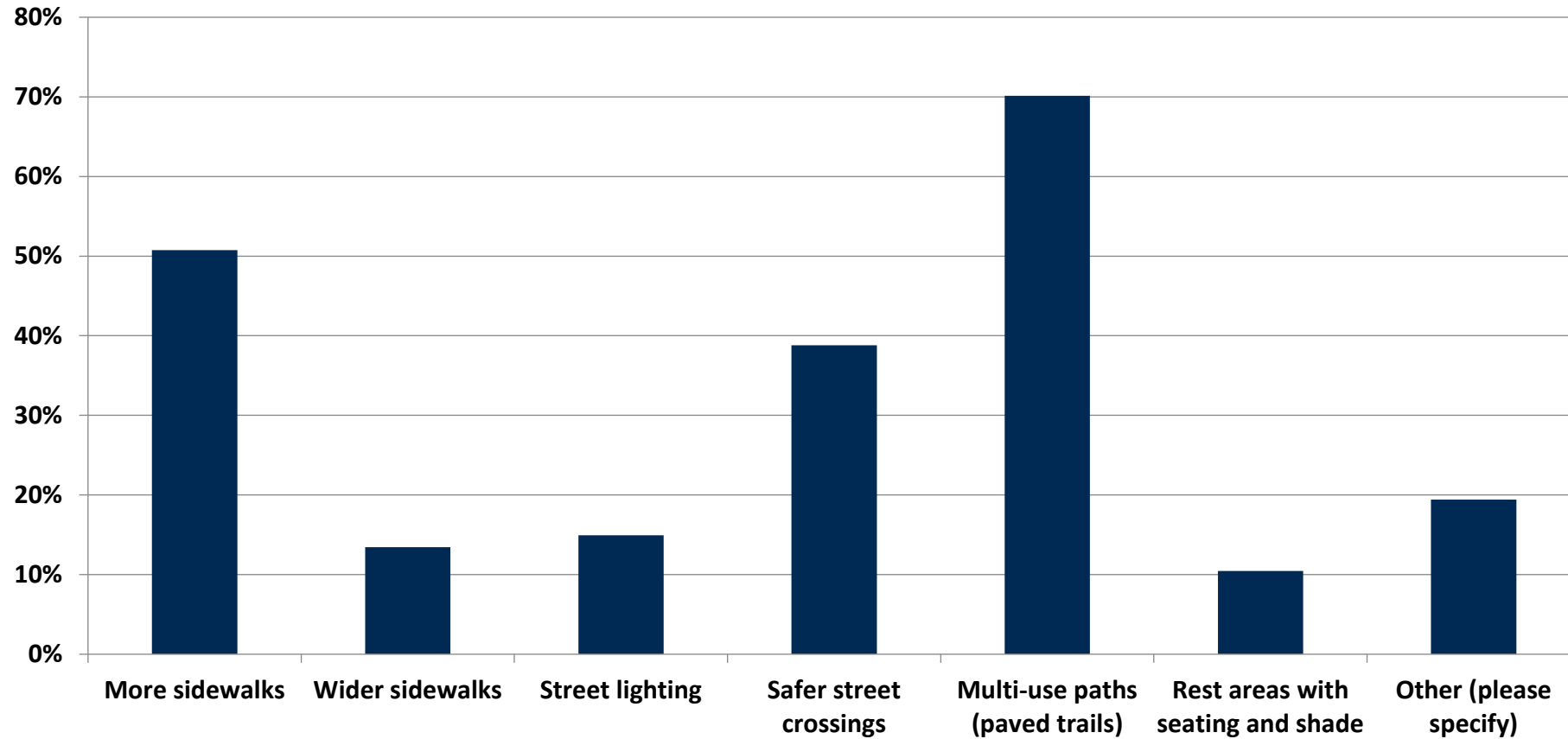
Q14: I walk or bike along the June Lake Loop for: (Check all that apply)



Project Survey in Progress



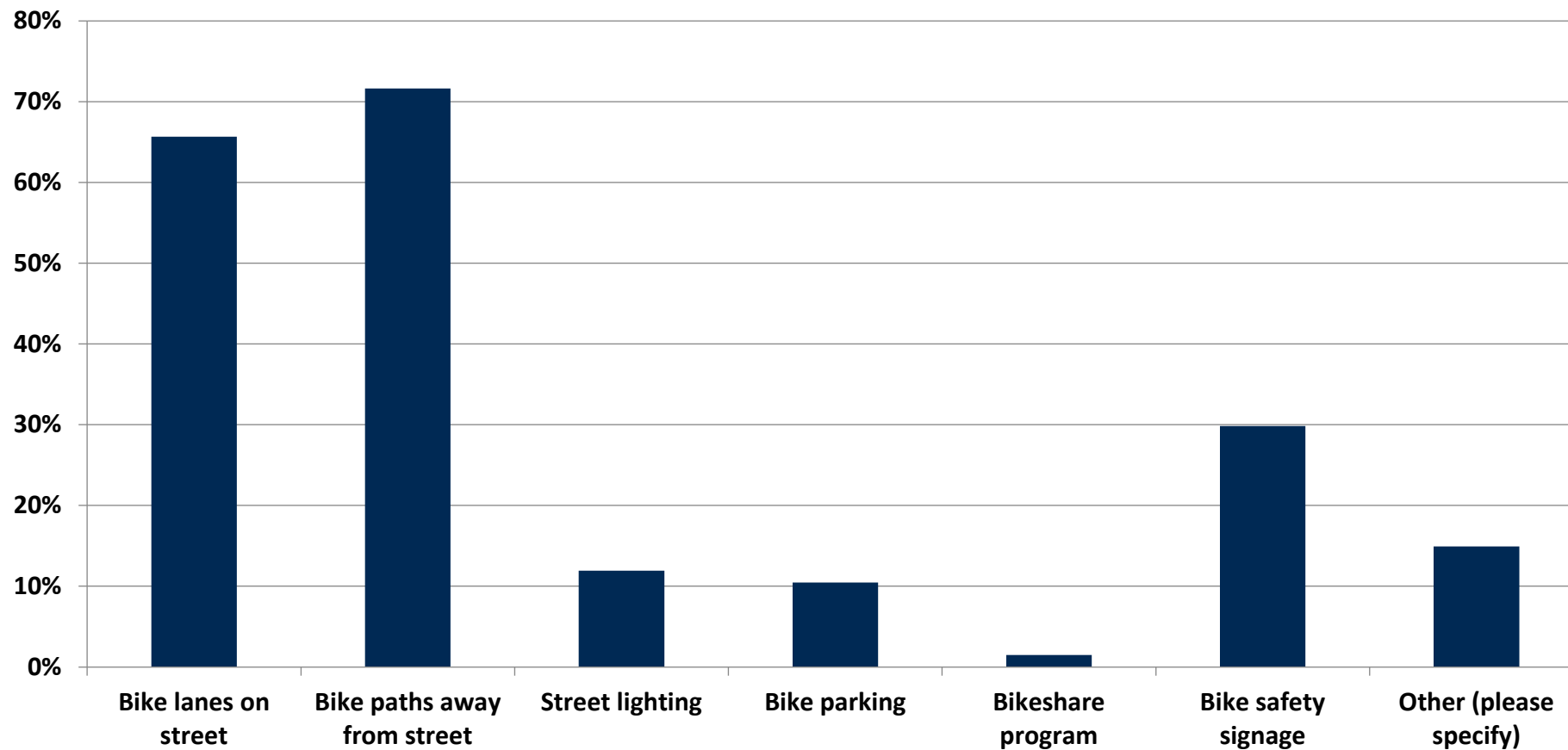
Q15: What improvements would encourage you to walk more around and among the communities along the June Lake Loop?



Project Survey in Progress



Q16: What improvements would encourage you to bike more around and among the communities along the June Lake Loop?



Project Online Map in Progress



Select a template to create features

Web Points

- ADA
- Walking
- Bicycling
- Transit
- Other

Layer List

Layers

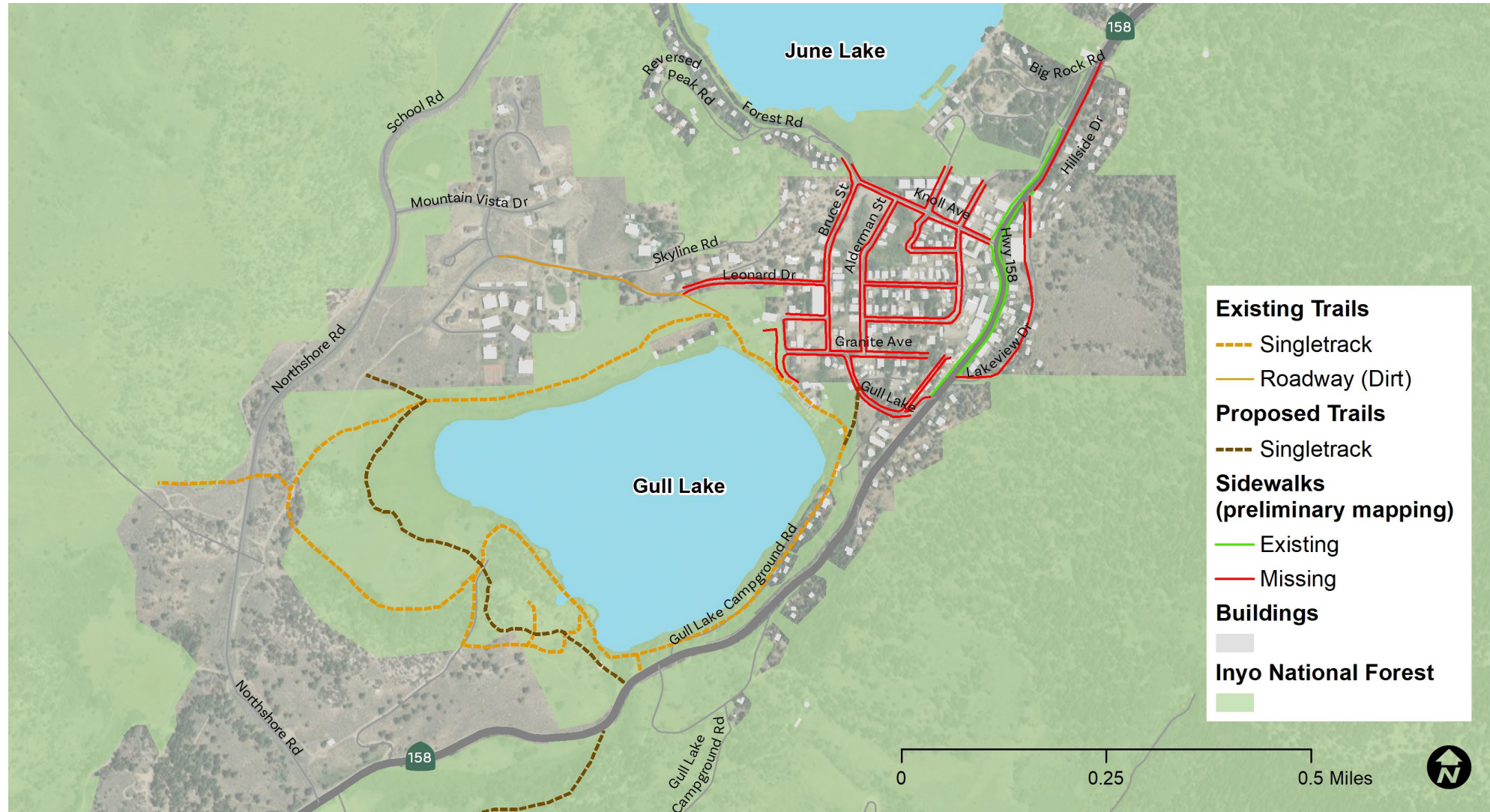
- Pedestrian-Involved Collision
- Bicyclist-Involved Collision
- Auto-Involved Collision
- Posted Speed Sign
- Trails

Basemap Gallery

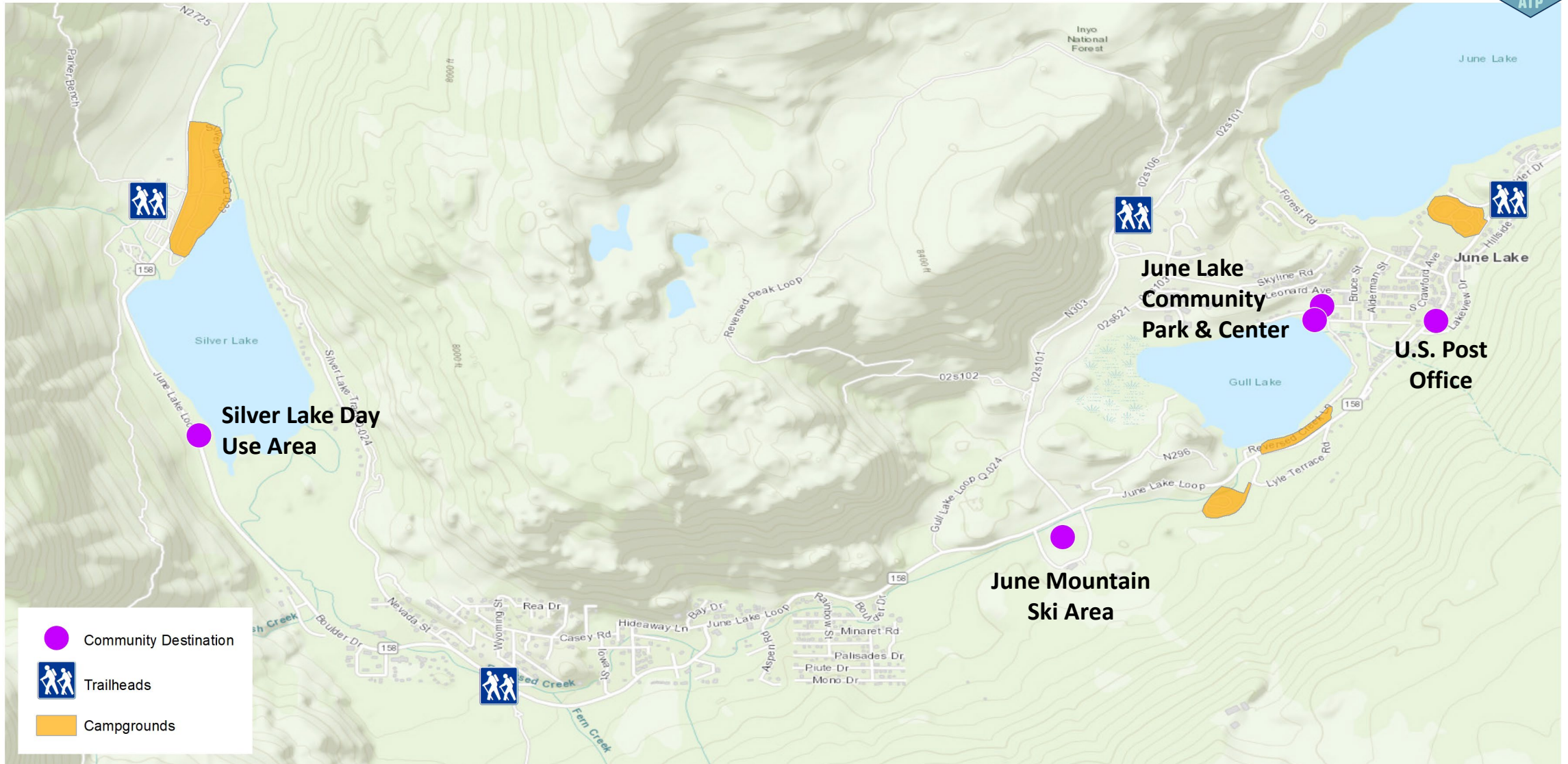
- Imagery
- Light Gray Canvas
- Topographic

A topographic map of the June Lake area. The map shows the June Lake Loop, June Lake, and surrounding terrain. Key features include Reversed Peak (8004 ft), Wilson Butte, and Obsidian Dome (9795 ft). Roads shown include June Lake Short Cut, Pumice Mine Rd, Wilson Butte Loop, Bald Mountain Rd, and Highway 395. Water bodies include June Lake, Rush Creek, Reversed Creek, Yost Creek, and Agnew Lake. The map is overlaid with several orange triangular markers with exclamation points, indicating areas of concern or features being tracked. There are also icons for ADA, walking, and bicycling along the June Lake Loop.

Existing Conditions Mapping in Progress



Existing Conditions Mapping in Progress



Multi-Day Charrette Summary



Day #1: Wednesday, June 22

- Opening workshop to gather input on challenges and opportunities
- Over 20 people attended the workshop

Day #2: Thursday, June 23

- Walk audit in the Village
- Pop-up workshop at Silver Lake
- Agency stakeholder meeting

Day #3: Friday, June 24

- Open house at Epic Café to present multi-day charrette highlights
- Share preliminary ideas

Multi-Day Charrette Summary



Multi-Day Charrette Summary



- 1 Speeding throughout the entire loop and village area
- 2 Parking issues in the village, at trailheads, along Silver Lake, and at June Ski Area
- 3 Not enough safe crossings
- 4 Lack of pedestrian and bicycle connections
- 5 Pavement conditions on Northshore Drive



Opening Workshop: Issues and Challenges

- 1 Multi-use path around the entire loop
- 2 Traffic calming throughout the loop and campgrounds
- 3 More crossings at important intersections
- 4 Shuttle service between major community areas
- 5 Wayfinding signage throughout the loop and Village



Opening Workshop: Opportunities

Multi-Day Charrette Summary



"A **connected community** throughout the canyon to benefit locals and tourists alike."

"To be able to **ride a bike** around the entire JL loop."

"A safe space for multi-modal transportation, pathways that promote connectivity while maintaining the **natural, rural beauty** of June Lake."

"A year-round, **environmentally-focused** recreation community."

"Wild, open spaces with access and infrastructure to support a **thriving local population.**"

"I'd also love to see a more **vibrant downtown area** with walkable areas."

"A **charming and thriving small town** that supports all sorts of outdoor recreation."



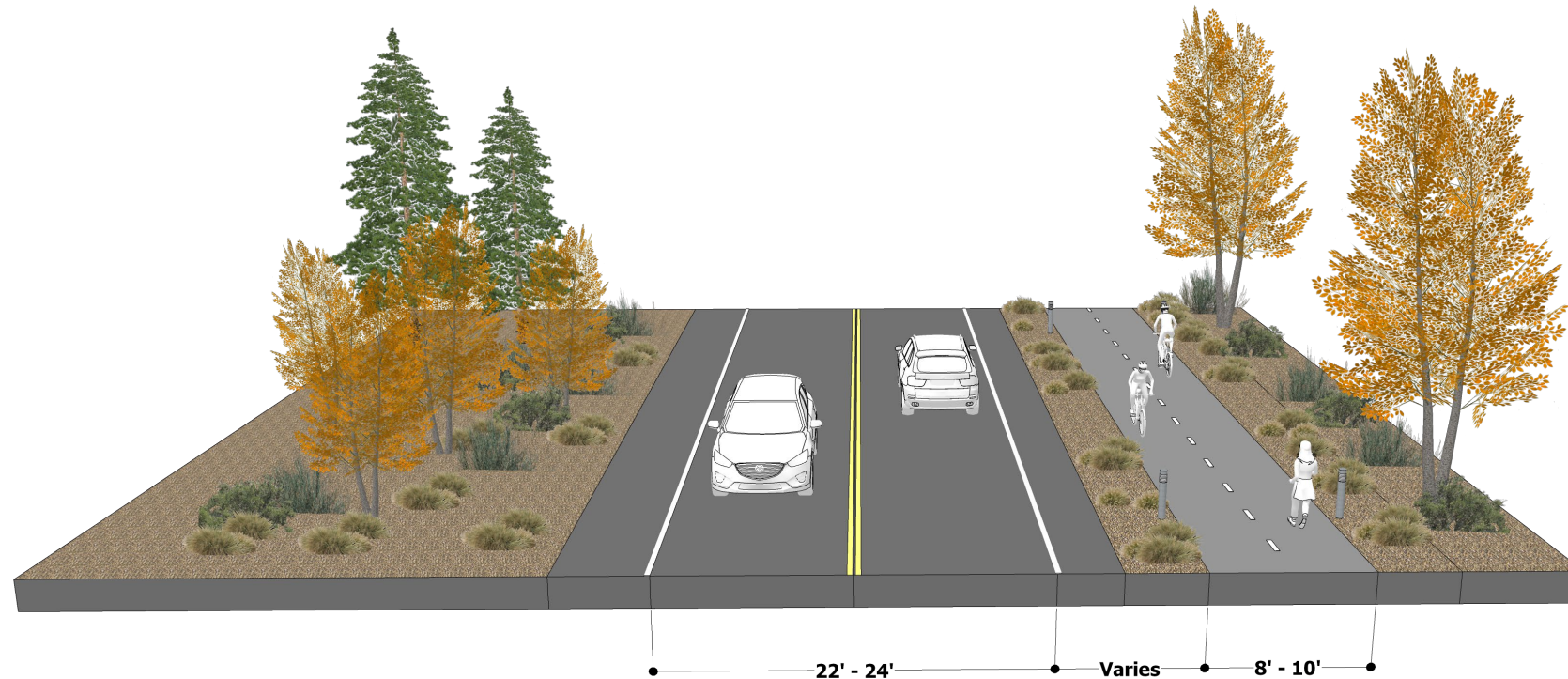
Vision Statements from Opening Workshop

Multi-Day Charrette Summary



Major topic: Class 1 multi-use path around the loop

- Can we prioritize a multi-use path between June Lake Beach to Silver Lake Campground?
- How do we phase this? Which segments are more feasible than others? Which will require extensive engineering?

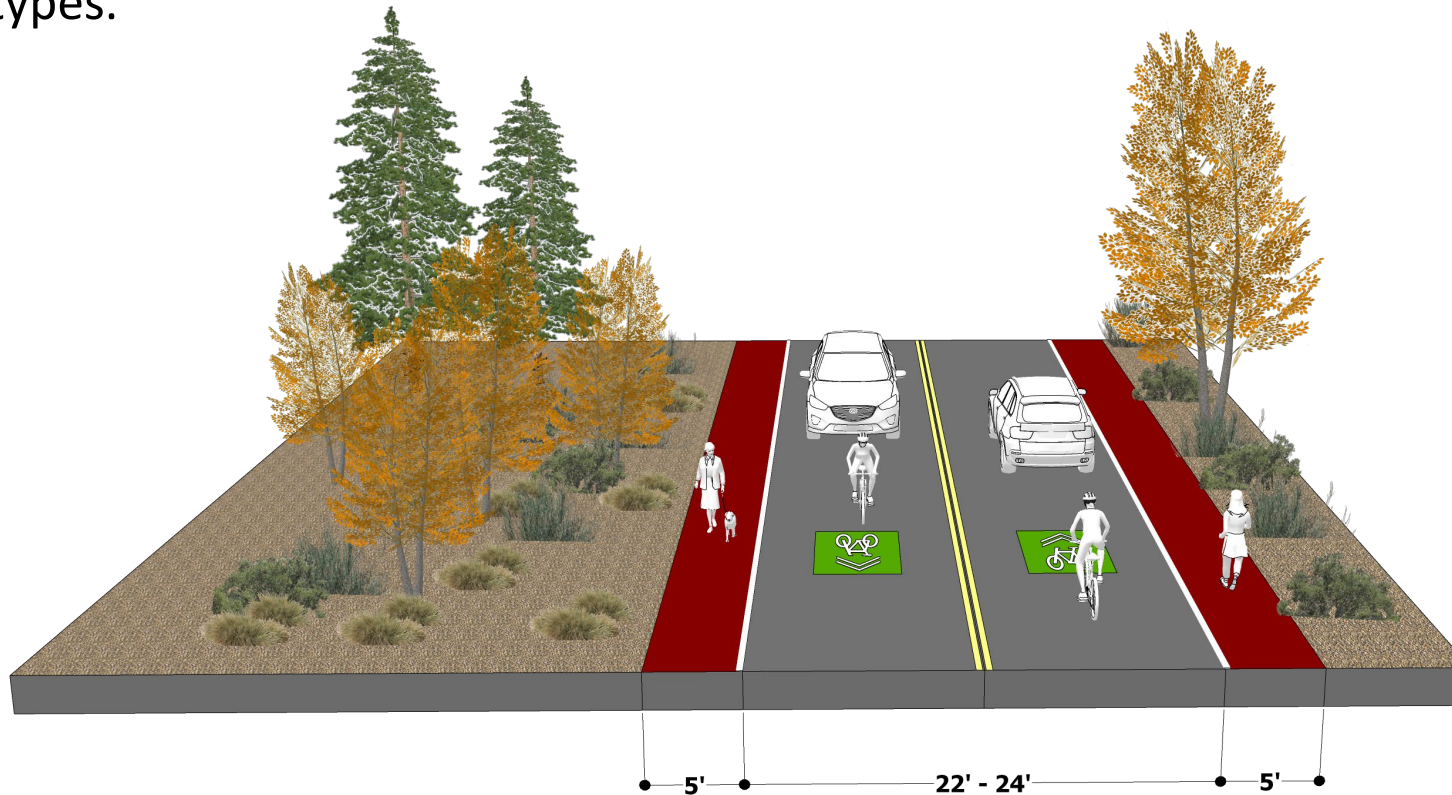


Multi-Day Charrette Summary



Major topic: Pedestrian and bicycling improvements within the Village

- Which projects more feasible than others?
- The existing conditions (i.e. narrow streets, connectivity, topography) will determine project types.



Next Steps



- Coordinate with traffic engineering team to evaluate segments of the loop
 - ✓ Will identify opportunities and challenges for proposed Class 1 multi-use path
- Refine list of pedestrian and bicycling recommendations for the Village area
- Develop list of supporting recommendations
 - ✓ Wayfinding signage toolbox, best practices toolbox, traffic calming solutions, etc.
- Present draft recommendations at a Fall 2022 community workshop
- Finalize report and present to Mono County Local Transportation Commission