

MONO COUNTY
SHERIFF

A Commitment to Community Safety and Service





Mono County was created on April 24, 1861, by the State of California. On June 1, 1861, Mono County held their first election, and N.F. Scott was elected as Mono County's first Sheriff.

Sheriff Ingrid Braun is the 23rd person to serve as Sheriff of Mono County.

The historic Mono County Jail, built in 1883 for \$5,750, and utilized until 1964.

Rumor has it that back in the day, the Sheriff lived next door, and his wife was tasked with feeding the prisoners through a portal in the building. A cinderblock sized hole on the east side of the building supports that supposition.





Responsibilities of the Sheriff's Office

MONO COUNTY SHERIFF

A Commitment to Community Safety and Service



Sheriff's Office

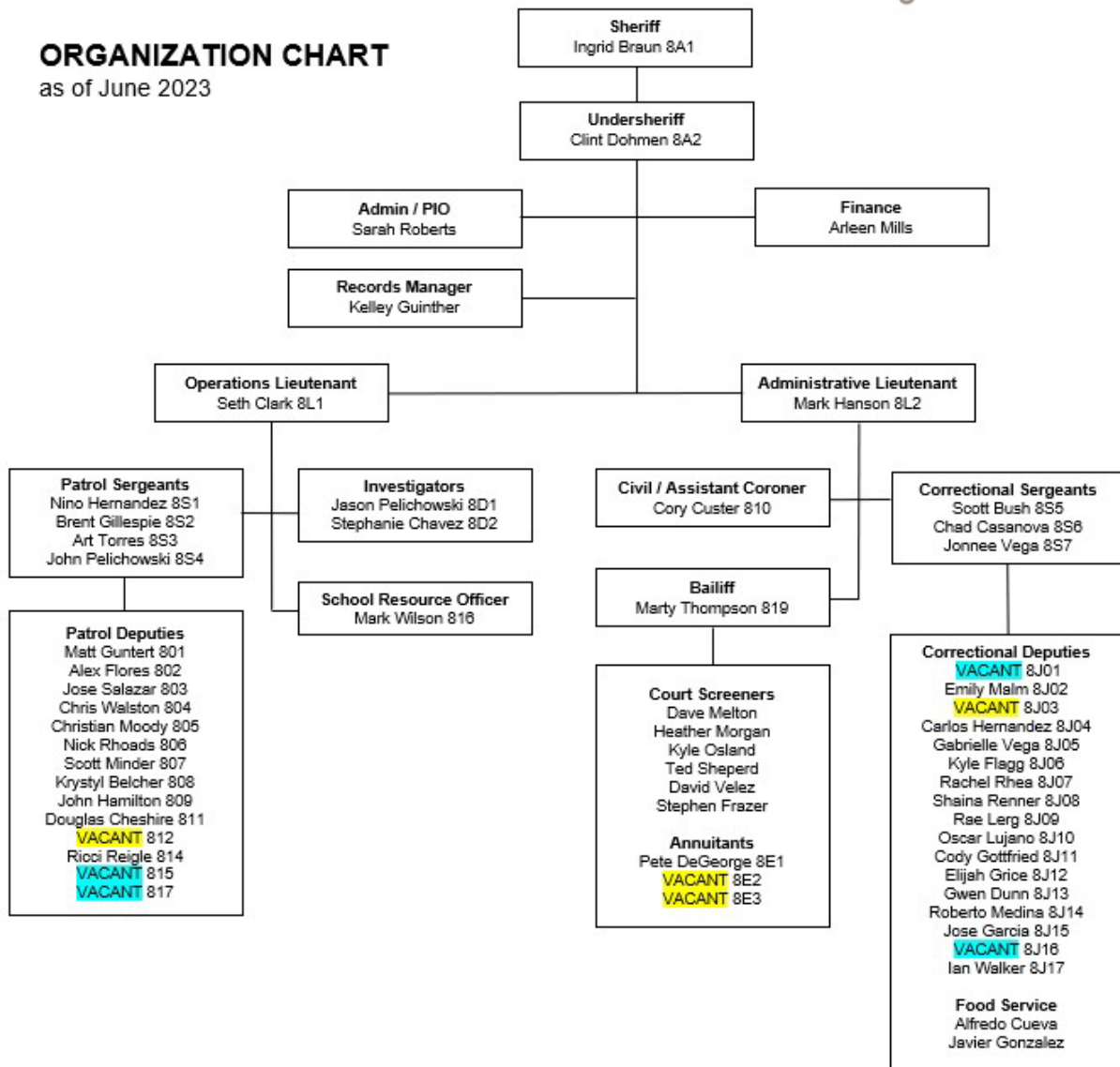
- Sheriff
- Undersheriff
- Lieutenant
- Sergeants (4)
- Investigators (2)
- Deputies (17)
- Administrative (2)
- Court Screeners/Annuitants (5)

Jail and Dispatch

- Lieutenant
- Correctional Sergeants (3)
- Correctional Deputies (17)
- Records Manager
- Food Service (2)

ORGANIZATION CHART

as of June 2023





Patrol



Dispatch



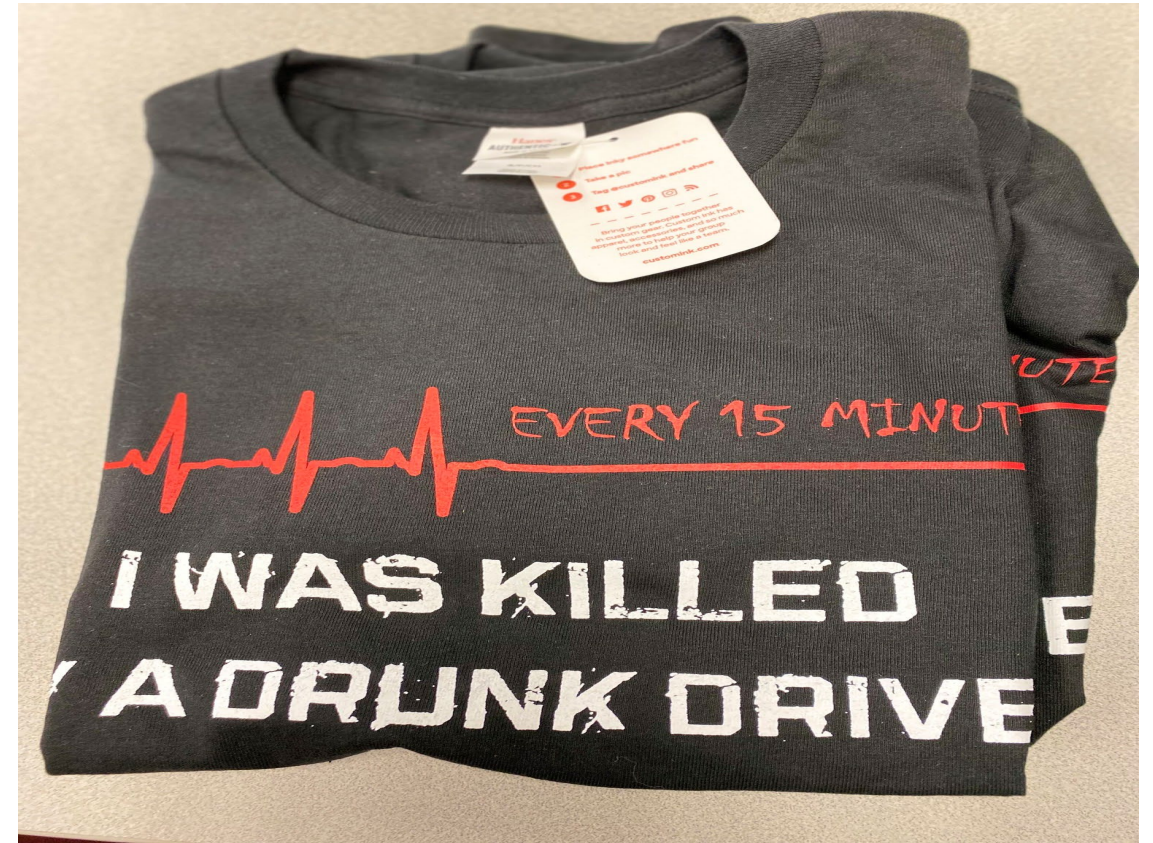
Jail



Court and Civil



Investigations and Coroner



School Resource Officer



Explorers



Boating Patrol



Off-Highway Patrol



Search and Rescue



Disaster Response



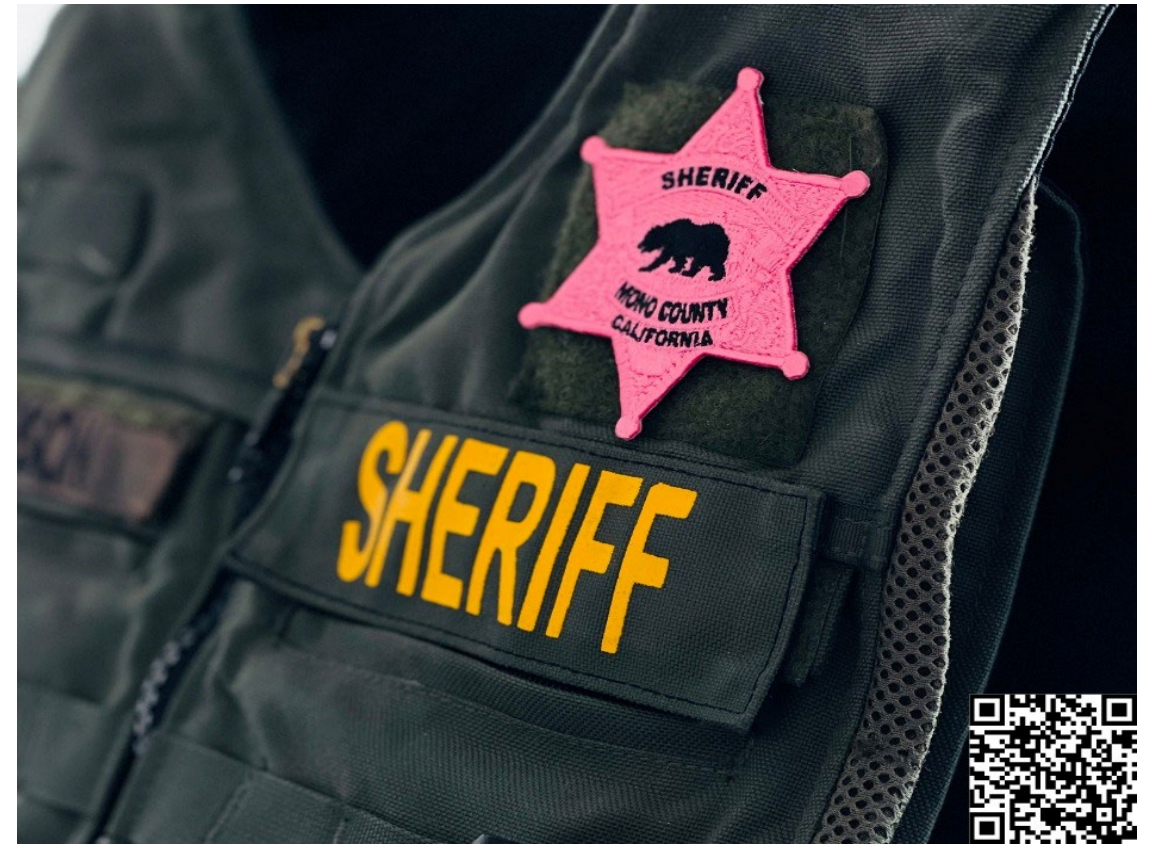
Partnering



Physical and Mental Health

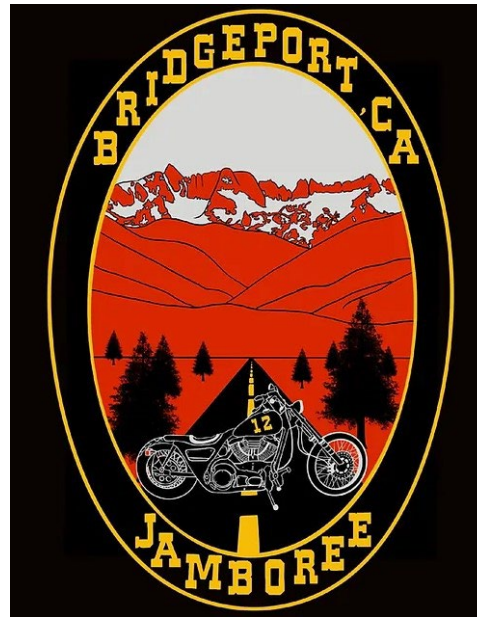


Community Involvement



Community Involvement

**Bridgeport's 161th Annual
FOURTH OF JULY CELEBRATION SCHEDULE
2023**



**Eastern Sierra
ATV/UTV Jamboree 2023**

Event Support

Social Media Engagement





How do I measure success?

Standard data metrics are unreliable because of the low numbers.

Success is in the people who work here.

Success is in the community response.

Success is in the lack of complaints.