

SCE Government Advisory Panel (GAP) & Community Advisory Panel (CAP)

December 9, 2022



SOUTHERN CALIFORNIA
EDISON[®]

Energy for What's Ahead[®]

AGENDA

- 1. Welcome and Safety Moment by Zanku Armenian, Director of Public Affairs, Local Public Affairs, SCE**
- 2. Opening Remarks by Caroline Choi, SVP, Corporate Affairs, SCE and Edison International**
- 3. Company Update by Steve Powell, President & CEO, Southern California Edison (SCE)**
- 4. Wildfire Mitigation Update by Larry Chung, VP, Local Public Affairs, SCE**
- 5. Closing Remarks by Monica Nuñez, Sr. Manager, Community Engagement, Corporate Communications & Philanthropy, SCE**

SCE Government Advisory Panel (GAP) & Community Advisory Panel (CAP)



Key Drivers of the Grid of the Future

SUPPLY



- **Very high level of renewables** (intermittent and away from load centers)
- Power system reaching **critically low level of inertia** due to gas retirements

CUSTOMER



- **Large adoption of DERs** dominating distribution level circuits
- **Significant changes in load density** due to urbanization, EV charging, etc.
- **More end uses that are sensitive to power quality** (e.g., power electronics)
- Overall, **increased reliance on electricity**

CLIMATE



- Growing impacts to **performance of grid assets** under climate stress
- Climate-driven changes in **customer needs and electric service continuity**

Strengthening and Modernizing the Grid

SCE plans to spend more than \$5B each year to maintain, improve, and harden its infrastructure

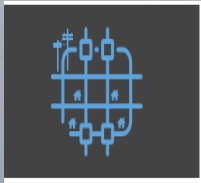
- **Infrastructure reliability** – updating underground cables, poles, switches, and transformers
- **Wildfire mitigation** – hardening infrastructure, bolstering situational awareness capabilities, and enhancing operational practices
- **Transmission** – connecting renewables, installing new substations, and updating lines
- **Distribution** – automation and cutovers to allow for two-way power delivery
- **Grid readiness** – updating the grid for impacts from new technologies
- **Long-term energy policy** – supporting energy storage, electric vehicles, and renewables

SCE's investments support safe, reliable, affordable, and clean energy for our customers

Adapting to Climate Change to Build a Resilient Grid

In May 2022, SCE released a vulnerability assessment examining climate change's impacts to the region's electricity system. Local leaders who similarly identify and address climate risks enable all of us to collaborate on keeping our region safe and thriving.

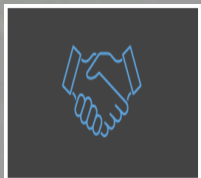
Key Findings Demanding Urgent Action



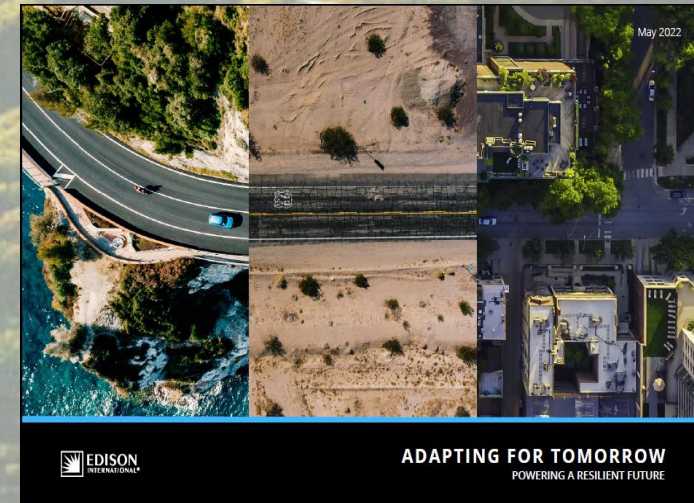
Planning Reform Future climate states must be incorporated into design standards and planning practices used by public and private sector entities for long-lived assets. (Current efforts are based on historical climate data, underestimating future conditions and associated risks).



Investment Unlock The cost to invest now is far less than the cost of inaction and will help hedge against the uncertainty society faces in the future. The good news here is that significant federal and state funding has been unlocked now to pursue urgent climate resilience investments.



Partnerships Collaboration between communities, local and regional planning authorities, and governments is required to address the interdependencies of critical infrastructures, ensure that vulnerable communities are supported, and minimize societal adaptation costs.



EDISON
INTERNATIONAL

ADAPTING FOR TOMORROW
POWERING A RESILIENT FUTURE

Charge Ready Program Highlights

- **\$436M in funding to support EV charging infrastructure for light-duty electric vehicles**
- **Provides significant financial and technical assistance to install charging stations**
- **Authorized budget will support over 30,000 charging ports**
- **Tremendous focus on equity and underserved communities**
- **Three program offerings with different incentive options designed to suit different customer needs**




SCE's Building Electrification Application

In December 2021, SCE filed a \$677M application with the CPUC seeking approval for new Building Electrification (BE) Programs

Motivation

Equity and Affordability

	<p>Prioritize vulnerable customers' adoption of future technology</p>		<p>Increased electrification improves overall affordability</p>
--	--	---	--

The Building Gap

	<p>BE Critical to CA GHG Reduction</p>		<p>Urgent action needed to avoid missing goals</p>
---	---	---	---

Application Highlights

4 Year Portfolio

- 2024-2027
- Retrofits:
 - 250k heat pumps
 - 65k electric panel & circuit upgrades

Marketing and Outreach

- Cities and CBOs
- Equity communities
- Contractors and Installers

Residential Single and Low-rise MF

<p>BE ReadySM Home Assessment</p>	<p>Home Readiness Bill Impacts</p>
<p>Upgrade Subsidies • Kickers for ESJ customers</p>	<p>Heat Pumps Water Heaters Electric Panels & Circuits</p>

Non-Residential

<p>HVAC/Technical Assistance for small/medium/large enterprises</p>
<p>Additional incentives for businesses in equity communities</p>

EDISON

DO YOU WANT TO CHANGE THE WORLD THROUGH STEM?

SCHOLARSHIPS

BECOME AN EDISON SCHOLAR.
Edison International is awarding

\$50,000

college scholarships to 30 high school seniors to help them follow their dreams in science, technology, engineering or math (STEM) and empower them to change the world.

The Edison Scholars Program recognizes students who want to be makers of tomorrow — the dreamers, inventors, guardians and pioneers — those who dare to be great.

GUIDELINES AT

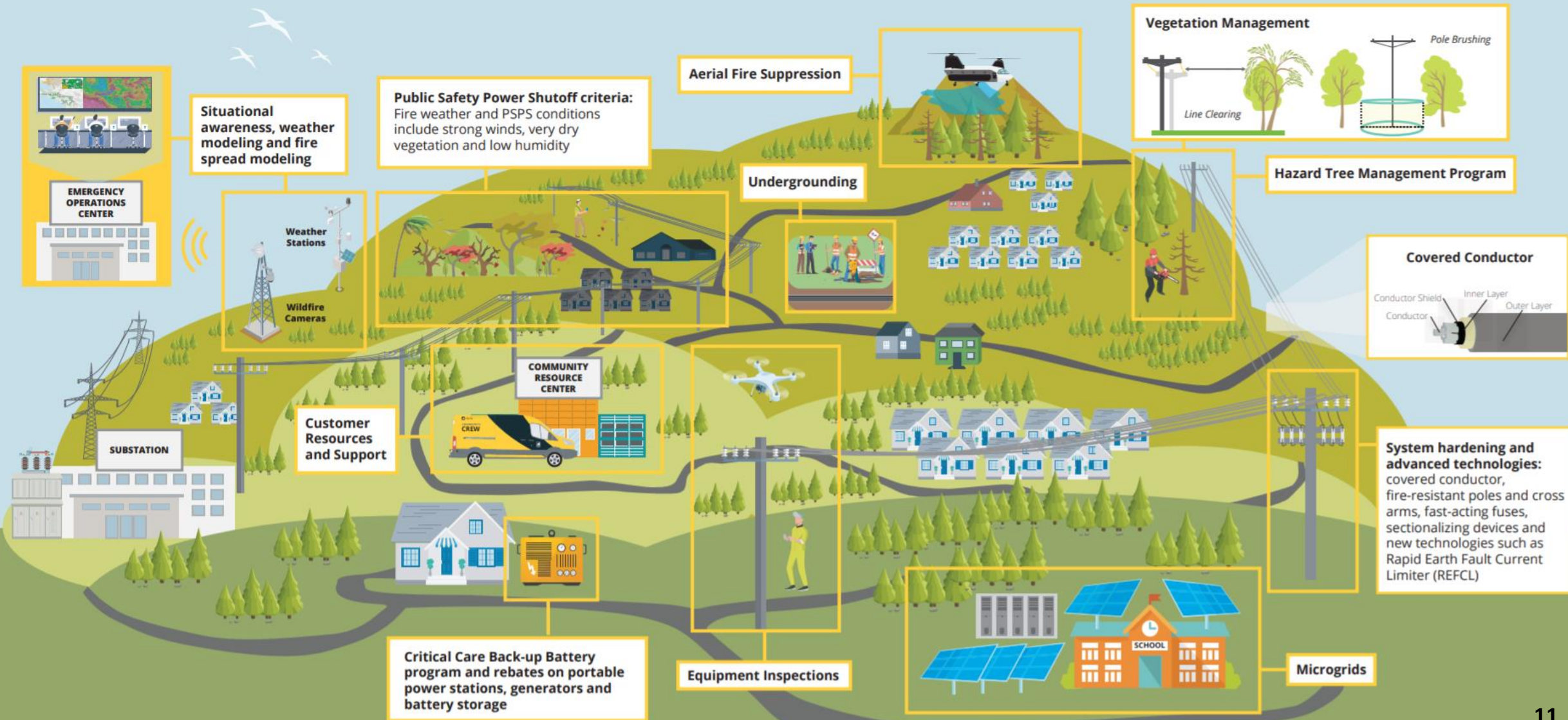
EDISONSCHOLARS.COM

- Applicants must have min. **3.0 GPA**, show financial need and plan to pursue studies in the STEM fields at a four-year accredited college or university.
- Application deadline: **Jan. 9, 2023**
- Edison International has awarded more than **\$13.5 million in scholarships to 730 students** through this program since 2006.
- The Edison Scholars Program is fully funded by shareholder dollars.

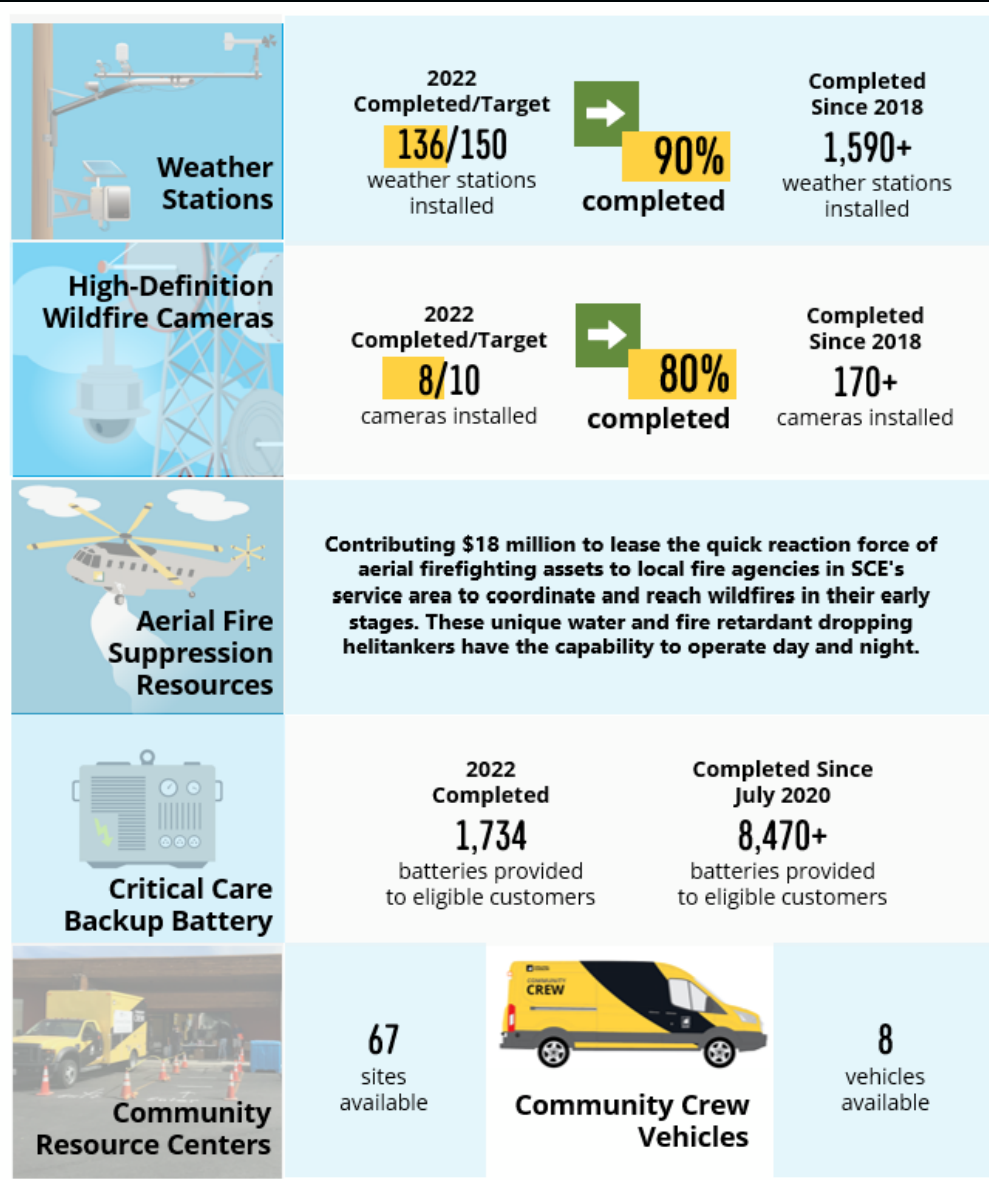
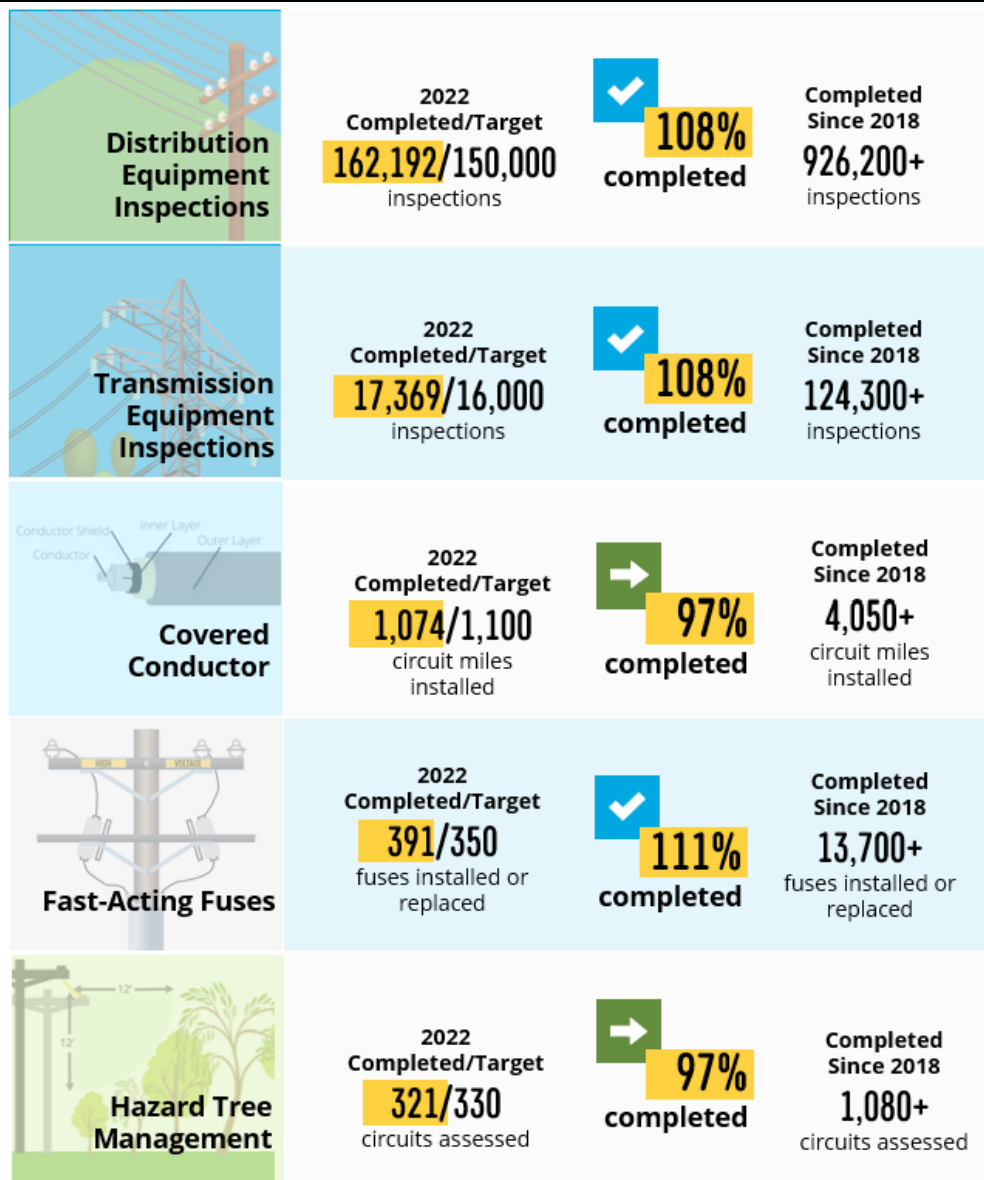
Q&As



Reducing Wildfire Risk in Our Communities



2022 Third Quarter Progress Update



Helpful Information & Resources

SCE Wildfire Webpage – [sce.com/wildfire](https://www.sce.com/wildfire)

SCE Notifications

- Sign up for PSPS alerts – [sce.com/pspsalerts](https://www.sce.com/pspsalerts)
- Sign up for the Energized by Edison Wildfire Mitigation Newsletter – energized.edison.com/newsletter

Situational Awareness

- SCE outage map – [sce.com/outagemap](https://www.sce.com/outagemap)
- PSPS information – [sce.com/psps](https://www.sce.com/psps)
- PSPS decision making – [sce.com/pspsdecisionmaking](https://www.sce.com/pspsdecisionmaking)
- Role of weather in PSPS – [sce.com/fireweather](https://www.sce.com/fireweather)
- Weather awareness for PSPS – [sce.com/wildfire/weather-awareness](https://www.sce.com/wildfire/weather-awareness)
- Situational awareness map – [sce.com/wildfire/situational-awareness](https://www.sce.com/wildfire/situational-awareness)
- Wildfire cameras – [alertwildfire.org](https://www.alertwildfire.org)
- Weather stations – [sce.com/weatherstations](https://www.sce.com/weatherstations)
- CPUC wildfire maps – ia.cpuc.ca.gov/firemap/

Preparedness

- SCE emergency preparedness – [sce.com/beprepared](https://www.sce.com/beprepared)
- CAL FIRE preparedness – [readyforwildfire.org](https://www.readyforwildfire.org)

Vegetation Management

- Vegetation Management – [sce.com/safety/power-lines](https://www.sce.com/safety/power-lines); contact 1-800-655-4555 or safetrees@sce.com

Customer Programs & Rebates

- SCE Customer Programs & Resources – [sce.com/customerresources](https://www.sce.com/customerresources)
- SCE Marketplace (rebates and programs) – [marketplace.sce.com](https://www.marketplace.sce.com)
- SCE Critical Care Backup Battery Program – [sce.com/ccbb](https://www.sce.com/ccbb)
- SCE Access & Functional Needs Resources – [sce.com/afn](https://www.sce.com/afn)
- SCE Medical Baseline Program – [sce.com/medicalbaseline](https://www.sce.com/medicalbaseline)
- Self Generation Incentive Program (SGIP) – [sce.com/sgip](https://www.sce.com/sgip) or [selfgenca.com](https://www.selfgenca.com)
- SCE Customer Support: 1-800-655-4555

Community Meetings

- Join SCE's wildfire safety community meetings – [sce.com/wildfiresafetymeetings](https://www.sce.com/wildfiresafetymeetings)

Energized by Edison

- Stories and videos on SCE's wildfire mitigation efforts and PSPS – [edison.com/wildfire-safety](https://www.edison.com/wildfire-safety)

Q&As





*Thank you for joining today's virtual meeting
of SCE's **Government Advisory Panel (GAP)**
& **Community Advisory Panel (CAP)**.*