

**March 21, 2017**

**Regular Meeting**

**Board of Supervisors**

**Supervisor Corless**

**Board Report**



**To:** RCRC Board of Directors  
**From:** Greg Norton  
President & CEO  
**Date:** March 20, 2017  
**Re:** RCRC Board Meeting Highlights (March 15, 2017)

---

### **President's Report**

RCRC President & CEO Greg Norton provided an update on the recent county visits to Tehama, Lake, Calaveras, and Colusa Counties, noting that RCRC Chair and Tehama County Supervisor Bob Williams is committed to attending fellow Board of Supervisors' meetings with RCRC staff when his schedule permits. Several additional county visits are scheduled, including Alpine and Nevada Counties, with additional dates in the works.

### **Administrative Matters**

#### April 2017 Board of Directors Meeting Update

RCRC Chair Bob Williams (Tehama), and RCRC Vice President of External Affairs/Administration Justin Caporusso, provided a detailed update on the April 2017 Board of Directors meeting to be held April 26-27 in Tehama County. The Board memo can be accessed [here](#), and the lodging form can be accessed [here](#). Completed forms should be sent to Sarah Bolnik, RCRC Office Manager, at [sbolnik@rcrcnet.org](mailto:sbolnik@rcrcnet.org), by April 13, 2017.

### **Governmental Affairs**

#### NACo Legislative Conference and Federal Advocacy Update

RCRC Officers and Members provided a brief summary on the efforts undertaken during their recent trip to Washington, D.C. in conjunction with the National Association of Counties (NACo) Annual Conference in late February. RCRC Chair Bob Williams (Tehama), RCRC First Vice Chair Rex Bohn (Humboldt), RCRC Second Vice Chair Randy Hanvelt (Tuolumne), Supervisor Lee Adams (Sierra), and Supervisor Kevin Cann (Mariposa), RCRC's NACo Western Interstate Region Representative, focused their advocacy efforts during meetings on Capitol Hill and with various federal agencies on Federal Payments in Lieu of Taxes, wildfire funding reform, Secure Rural Schools, and efforts to provide federal financial support on transportation/infrastructure projects. The Board memo can be accessed [here](#), and RCRC's advocacy materials can be accessed [here](#).

### California Tree Mortality Task Force

RCRC Regulatory Affairs Advocate Staci Heaton provided an update on the efforts of the California Tree Mortality Task Force (Task Force). The Task Force's Regulations Working Group held a workshop on February 9, 2017, to address questions surrounding homeowners insurance cancellations and non-renewals, and the Little Hoover Commission conducted its first hearing on January 26, 2017, to kick off a new forest management study focused on tree mortality, and will be holding a follow-up hearing focused on the local government perspective on April 27, 2017. Lastly, the Senate Natural Resources and Water Committee and the Assembly Natural Resources Committee held a joint informational hearing on February 27, 2017 to begin discussing issues and solutions surrounding California's forest management and tree mortality problem. The Board memo can be accessed [here](#), and the California Home Insurance Survey discussed during the meeting can be accessed [here](#).

### In-Home Support Services MOE Update

RCRC Consultant Kelly Brooks-Lindsey and RCRC Legislative Advocate Tracy Rhine provided a detailed update on the Governor's action to eliminate the In-Home Support Services (IHSS) Maintenance of Effort (MOE), shifting increased costs to California's counties. The issue includes many moving parts, and while RCRC staff will continue to engage with the Legislature and the Brown Administration on ways to significantly mitigate the Governor's recent actions, there may be a need to discuss potentially controversial options to mitigate the cost-shifts with either the Board of Directors and/or the Executive Committee. The Board memo can be accessed [here](#).

### **Legislative Committee**

#### Senate Bill 1 (Beall) / Assembly Bill 1 (Frazier) Transportation Funding – ACTION

Following much discussion, the RCRC Board of Directors took a "Support" position on Senate Bill 1 (Beall) / Assembly Bill 1 (Frazier), the legislative package that addresses funding for improving our state and local transportation needs. The Board memo can be accessed [here](#).

### Update on RCRC-Sponsored Bills

RCRC Vice President of Governmental Affairs Paul A. Smith, and RCRC staff, provided an update on RCRC-sponsored legislation, including Senate Bill 447 related to Assessment Appeals Boards, Senate Bill 148 related to cannabis fee collection (currently awaiting acceptance of requested amendments), and Senate Bill 58 related to State Payment in Lieu of Taxes. RCRC staff also discussed strategy behind advocating for use of the Public Resources Code definition of disadvantaged communities in legislative efforts proposing utilization of the CalEnviroScreen tool.

### **Regulatory Committee**

#### California Air Resources Control Board Low-Income Communities Under Assembly Bill 1550 (Gomez)

RCRC Legislative Advocate Staci Heaton provided an update on the State's implementation of Assembly Bill 1550 (Gomez), which was signed into law last year requiring a portion of Cap-and-Trade auction proceeds to be spent for the benefit of low-income households across the state. While RCRC initially supported AB 1550 as a vehicle to potentially filter Greenhouse Gas Reduction Fund monies into socioeconomically disadvantaged areas of rural California currently left out of the

CalEnviroScreen definition, the bill was amended in the last week of session to include a mere five percent for low-income communities, and another five percent for communities located within one-half mile of an already designated disadvantaged community. The bill was subsequently approved by both Houses, and signed into law by the Governor. Recently, the State has been working on establishing a methodology to identify these low-income communities, and the initial maps indicate that many of the socioeconomically challenged areas in RCRC member counties currently not captured under the CalEnviroScreen definition will in fact be folded into the AB 1550 definition. The Board memo can be accessed [here](#). The interactive maps for the Air Resources Board's proposed AB 1550 low-income communities methodology can be accessed [here](#).

### **Water and Natural Resources Committee**

#### Water Issues Update

RCRC Senior Legislative Advocate Mary-Ann Warmerdam summarized the multi-year, multi-pronged water policy initiatives currently being pursued by the State, including the Sustainable Groundwater Management Act, California WaterFix, the Bay-Delta Water Quality Plan, and two Water Bonds. The Board memo can be accessed [here](#).

#### **Guest Speakers: Effective Legislative Advocacy for Rural Counties**

Jeff Gozzo, Office of Senate President pro Tempore Kevin de León, and Kevin Bassett, Chief of Staff to Senator Patricia Bates, participated in an interactive discussion on tactics for effective advocacy in the State Capitol.

#### **Guest Speakers: PROTECT Human Trafficking Education Program**

Ashlie M. Bryant, President and Co-Founder of 3Strands Global Foundation, and Vanessa Russell, Founder and CEO of Love Never Fails, provided an update on the RCRC-funded [PROTECT](#) human trafficking education program.

*Please refer to the Board Packet and Supplemental Packet for further details related to the items above, as well as all items covered during the March 2017 Board of Directors meeting. The March 2017 Board Packet can be accessed [here](#).*



# Reds Meadow Road Improvements Project

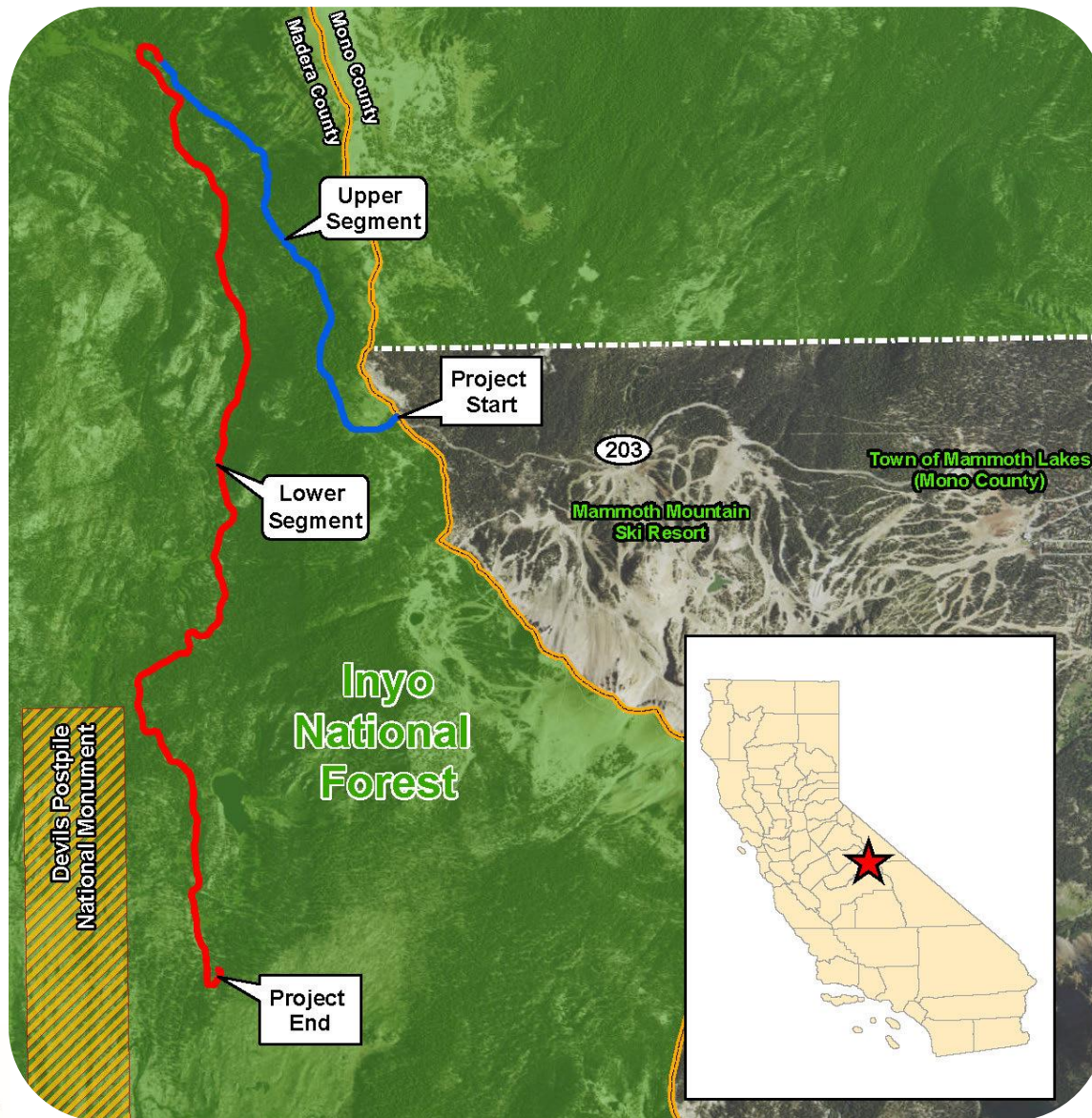


# Purpose of Today's Meeting

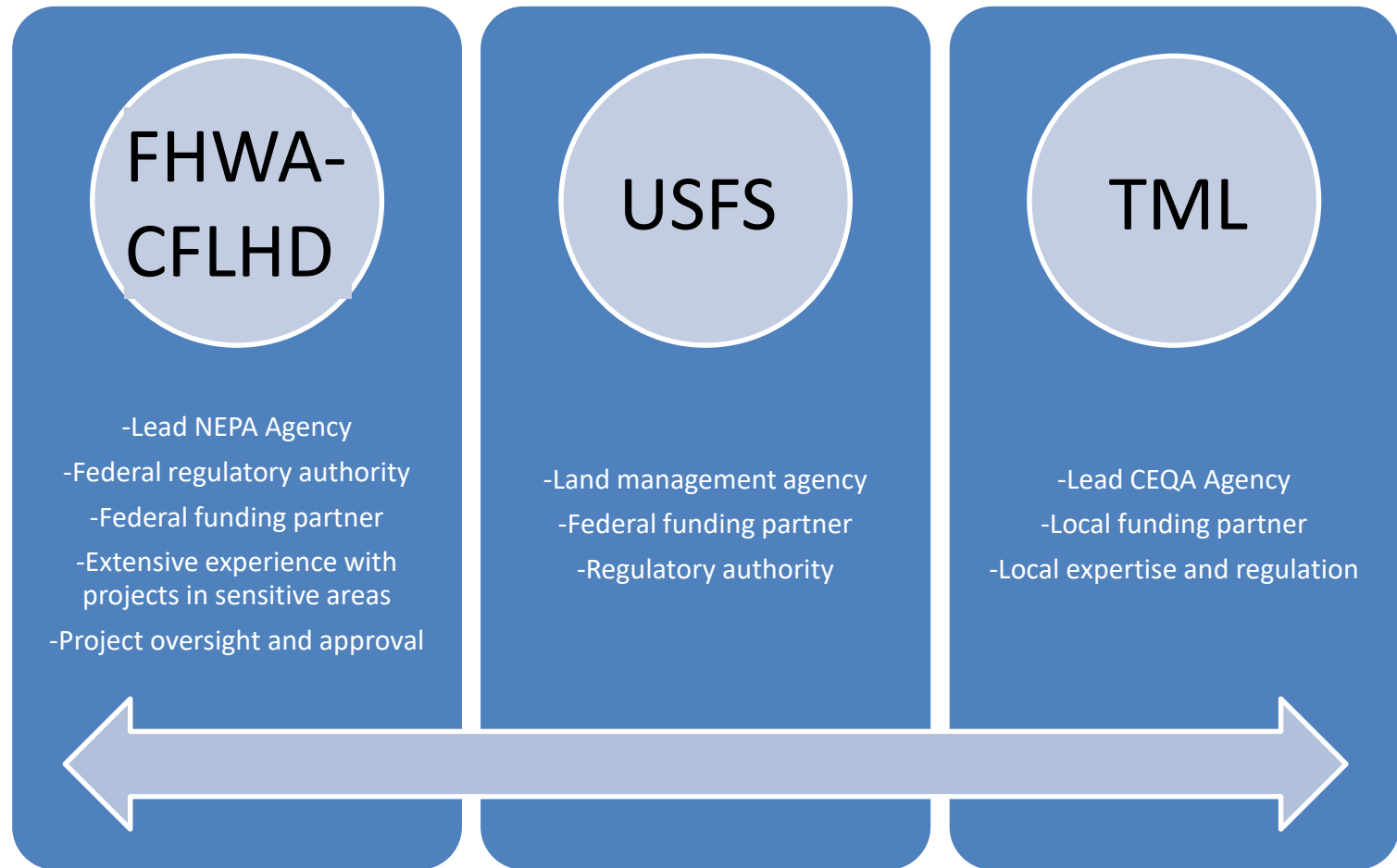
- Introduce the proposed project and project partners
- Describe the project's purpose and need
- Provide an update on what's been accomplished to date, and describe next steps
- Answer questions, engage and inform the public, listen to concerns and gather additional relevant project information



# Project Overview



# Project Partners





# CFLHD Project Portfolio



REDS MEADOW ROAD IMPROVEMENTS PROJECT  
CA FTFS 03S11(1)

# CFLHD Project Portfolio



# Purpose and Need

## Purpose

- Improve the deteriorated roadway condition
  - Ensures access to recreational resources
- Improve roadway user mobility/safety
  - facilitates emergency response into/out of valley
  - reduces likelihood of multi-modal traffic incidents



## Need

- Substandard roadway integrity
- Unstable roadside slopes
- Inadequate vehicle passing locations and conditions
- Substandard sight distance at some curves



# Purpose and Need

- Without improvements, the roadway will continue to deteriorate and impede vehicular access and mobility.
- Maintenance activities provide only temporary roadway repairs and cannot address ongoing structural and drainage concerns.
- Temporary road repairs will eventually be insufficient to maintain the roadway's integrity.



# What We've Accomplished

## Environmental

- Stakeholder meeting (February 2016)
- Planning and Environmental Linkages Study (PEL)
- Cultural/historic/archaeological field survey
- Aquatic resources field survey
- Threatened and endangered species field survey
- Initiated coordination with resource agencies

## Design/Engineering

- Conceptual-level design plans
- Conceptual-level construction cost estimate
- Topographic survey at poor sight distance curves
- Retaining wall cost/benefit analysis
- Design Technical Memorandum (DTM)



# PEL Study



## Final Planning and Environmental Linkages Report

Reds Meadow Road

Prepared for the United States Forest Service and Federal Highway Administration, Central Federal Lands Highway Division  
by CH2M

August 2016

- Understand roadway characteristics, functionality, and use
- High-level look at existing environmental conditions and potential impacts
- Screening for fatal flaws in alternatives
- Informs and streamlines the NEPA/CEQA process



# PEL Study

- 9 alternatives screened against 18 criteria factors
- 2 options for the upper segment and 3 options for lower segment will be carried forward into NEPA/CEQA

Upper Segment (Entrance to Agnew Meadows)

- One lane/two lane combination
- Continuous two lanes

Lower Segment (Agnew Meadows to Reds Meadow Resort)

- No Action (Existing Conditions)
- Rehabilitation
- Rehabilitation and realignment

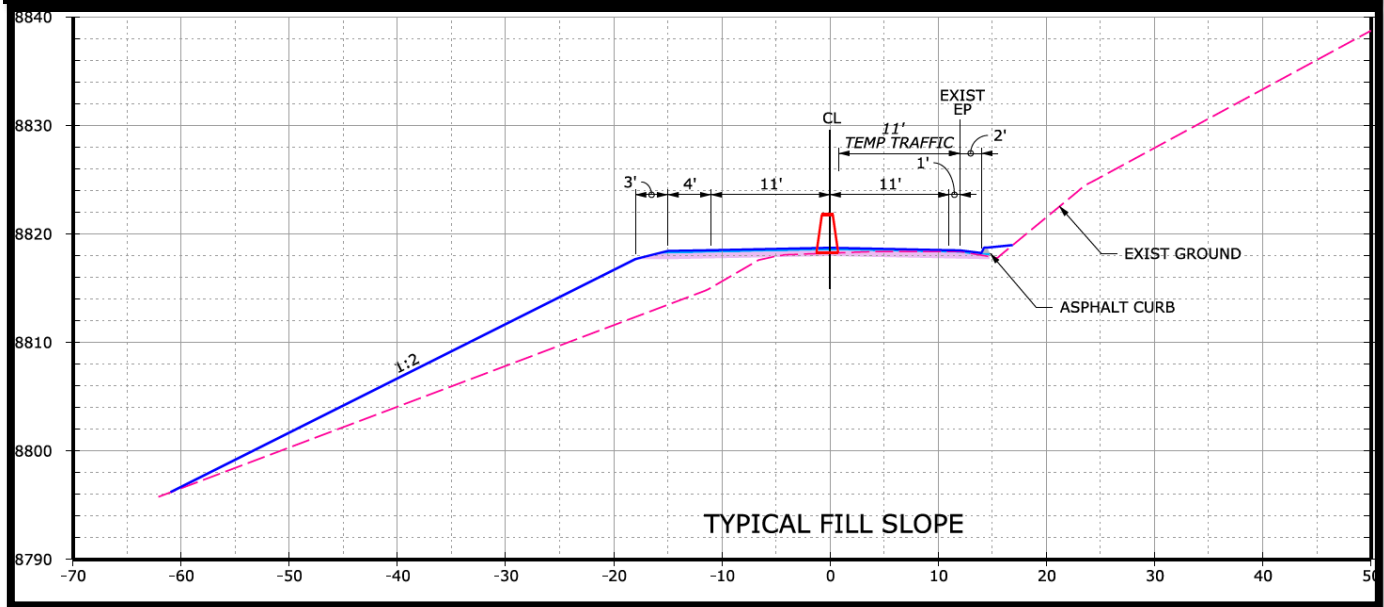
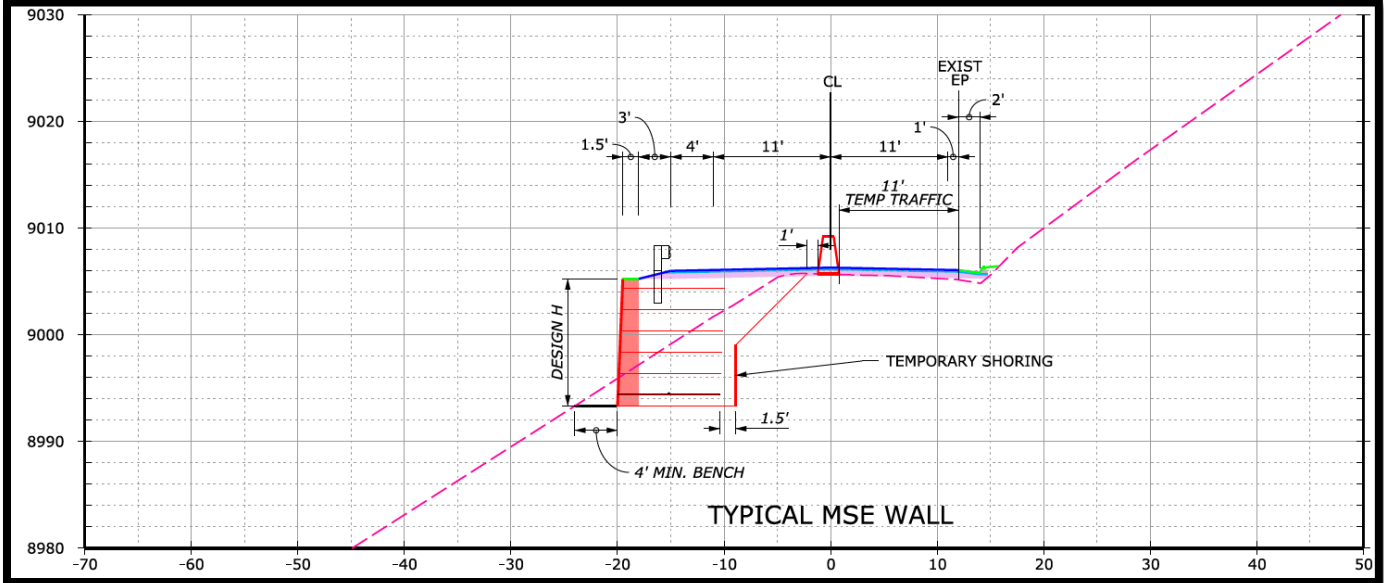


# Design Summary

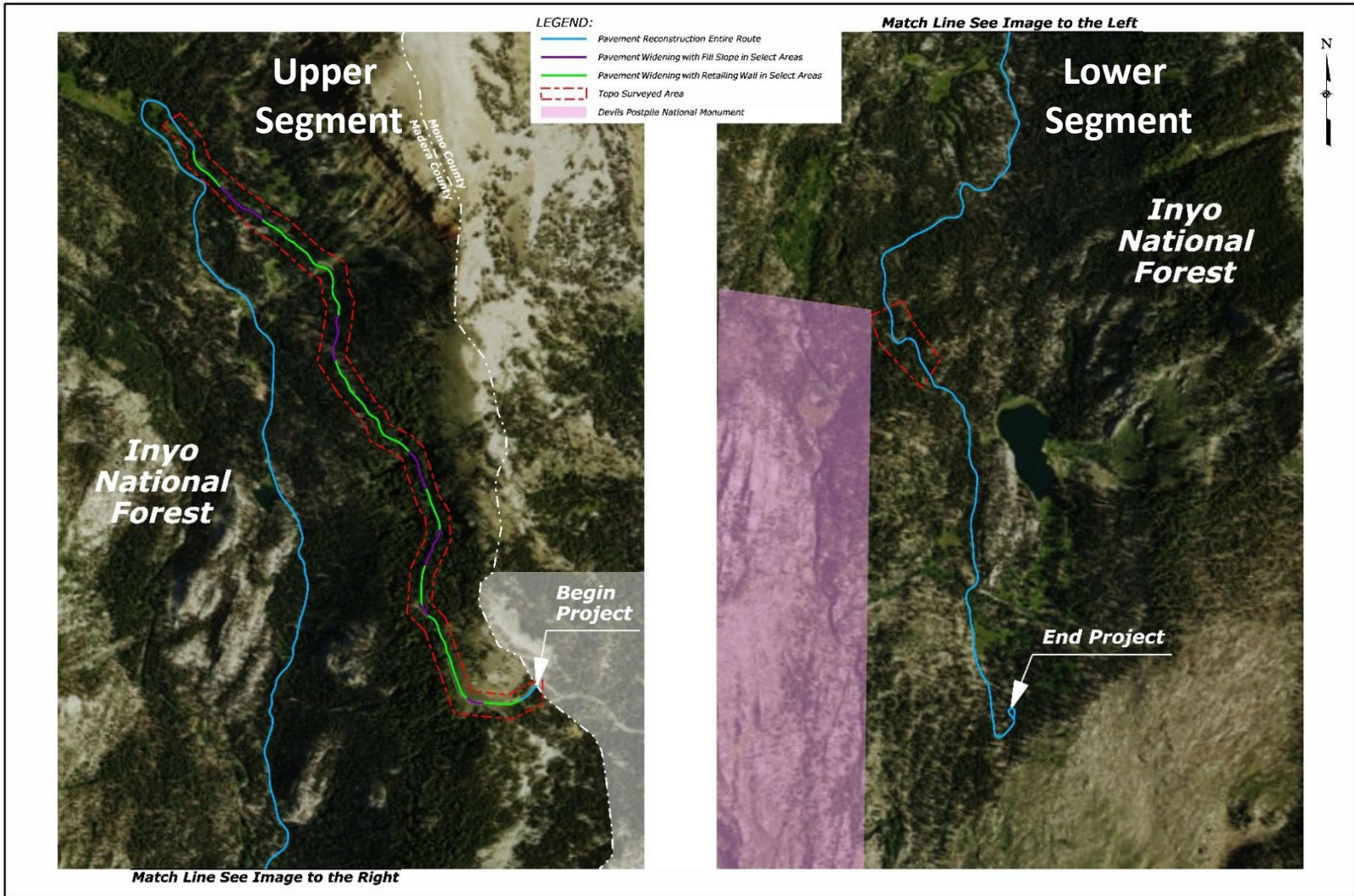
- Identified key constraints:
  - Maintaining access during construction
  - Steep topography
  - Narrow construction work zone
- Evaluated various road widening methods:
  - Cut slopes and cut retaining wall types
  - Fill slopes, rock buttresses and fill retaining wall types
- Developed 15% Design for upper 2.5 mile segment
  - Alternative 2: One lane/two lane combination
  - Alternative 3: Widen to two continuous lanes
- Prepared construction cost estimates for each alternative
  - Cost based analysis for significant construction items including (traffic control, paving, retaining walls, and guardrail)
  - Historical cost data for other items (grading, drainage, erosion control and striping)
- Summarized design in a technical memorandum







# Preliminary Project Design



# Preliminary Construction Estimates

Alternative	15% Design Estimate		
	Upper 2.5 Miles	Lower 5.8 Miles	Project Total
1: Rehabilitation (pavement reconstruction) entire 8.3 mile length	\$2.7M	\$6.3M	\$9.0M
2: Combination one/two-lane upper 2.5 miles and rehabilitation lower 5.8 miles	\$9.2M	\$6.3M	\$15.5M
3: Widen to two-lanes upper 2.5 miles and rehabilitation lower 5.8 miles	\$16.7M	\$6.3M	\$23.5M
4: Combination one/two-lane upper 2.5 miles and rehabilitation lower 5.8 miles with select road realignments	\$9.2M	\$6.8M	\$16.0M

Note: M = million U.S. dollars



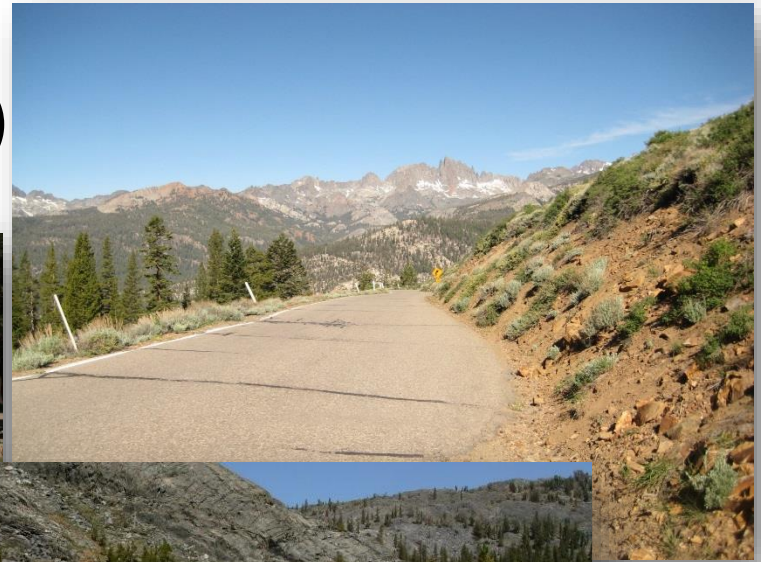
# NEPA/CEQA

- Evaluate potential impacts to environmental resources
- Preference on minimizing/avoiding impacts
- Engage stakeholders/resource agencies/public
- Prepare and approve NEPA/CEQA document
  - Including avoidance, minimization and mitigation measures
- Establish foundation for regulatory permitting



# Environmental Analysis – Technical Disciplines

- Wetlands and Aquatic Resources
- Threatened, Endangered, or other Special Status Species
- Cultural (Historic, Archaeology, Paleontology) Resources
- Visual Resources
- Recreational Resources/Section 4(f)
- Bicycle and Pedestrian Access
- Noise
- Water Quality
- Land Use
- Economics
- Air Quality
- Cumulative Impacts



# Environmental Analysis – Technical Disciplines

- Wetlands and Waters of the U.S.
  - No wetlands identified
  - Potential Waters of the U.S at existing culvert crossings
- Biological Resources
  - No listed plants to be impacted
  - Low Potential to occur for Sierra Nevada Yellow-Legged Frog
- Cultural Resources
  - Three sites/features identified
  - No eligible National Register of Historic Resources sites impacted
- Visual Resources
  - Simulations of improved/built features to be prepared



# Schedule and Next Steps

- Complete resource agency consultation (summer 2017)
- Draft EA/IS **public circulation and comment period** (summer 2017)
- Final EA/IS (fall 2017)
- NEPA/CEQA decision document (winter 2017)
- Secure funding for final design and construction (tentatively 2017)
- Final Design (dependent upon funding, tentatively 2018-2020)
- Construction (dependent upon funding, 2021 is likely the earliest)



**March 21, 2017**  
**Regular Meeting**

**Item #9e**

**SOCIAL SERVICES**

**Continuum of Care**  
**Reform & Resource**  
**Family Approval**



## **Continuum of Care Reform (aka Foster Care Reform)**

---



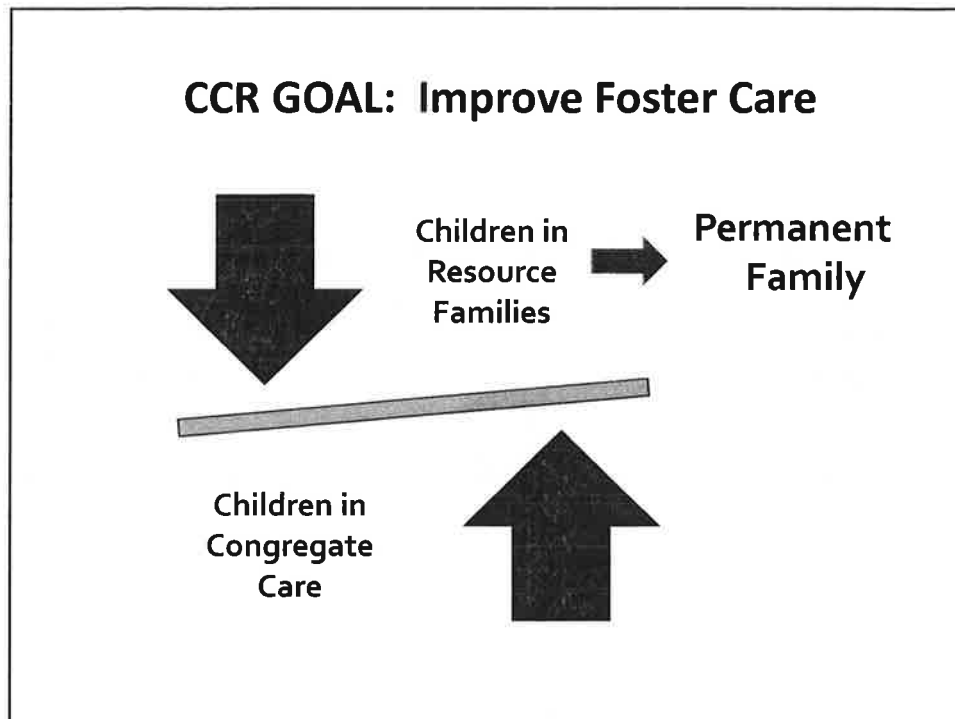
Mono County Departments of Social Services; Probation; Behavioral Health  
March 2017

### **Goals for Today**


---



- Continuum of Care Reform Overview
- Increasing Capacity for Home-Based Care
- Group Homes to STRTPs
- Challenges/Strengths
- Assistance needed



**CCR BACKGROUND**



**Context for Change:**

- Proportion of children in Group Homes has remained fairly constant despite efforts to reduce it.
- Poor outcomes for children placed in group homes for long periods of time.

**Legislative mandate:**

- Reform Group Homes with stakeholder input
- Legislative report with recommendations
- CCR Legislation: AB 403 (2015) & AB 1997 (2016)

### Continuum of Care Reform:



*A comprehensive framework that supports children, youth and families across placement settings (from relatives to congregate care) in achieving permanency.*

#### Includes:

- Increased engagement with children, youth and families
- Increased capacity for home-based family care
- Limited use of congregate care (Group Homes)
- Systemic and infrastructure changes: rates, training, accreditation, accountability & performance, mental health service



## Vision



- All children live with a committed, permanent and nurturing family
- Individualized and coordinated services and supports across all systems
  - Children shouldn't need to change placements to receive services
- When needed, congregate care is a short-term, high quality, intensive intervention that is just one part of a continuum of care available for children/youth



## Key Strategies

---

- ❖ **Child and Family Teams (CFTs)** drive case planning, placement decisions and care coordination.
- ❖ **Home-Based Family Care:** Retention and recruitment of committed families.
- ❖ **Increased services and supports,** including mental health.
- ❖ **New licensing requirements:** Ensure providers have an identified ability to meet the varied needs of children.
- ❖ **Collaboration** between providers, child welfare, probation and mental health to provide integrated services.

**Launch date:**  
**January 1, 2017**

---

Includes children/youth in  
Child Welfare and Probation

# CHILD AND FAMILY TEAMS

---



## CHILD AND FAMILY TEAM (CFT)

---



- **Who:** The **child and family members**, professionals, and other people identified by the family who are invested in the child and family's success.
- **What:** The CFT's role is to help the family members define and reach their goals and develop a child and family-centered case plan.
- **Why:** CFT convened for purpose of identifying supports and services needed to achieve permanency and to enable youth to be in the least restrictive family setting that promotes normal childhood experiences

*WIC § 706.6 & 16501.1*

## INCREASING CAPACITY FOR HOME-BASED CARE

---



## Increasing Capacity



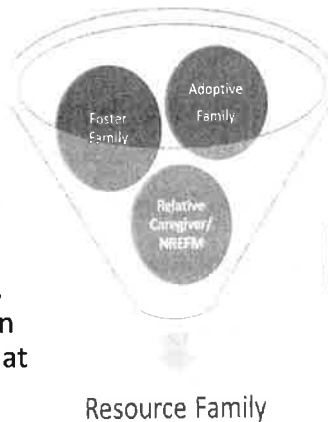
- Streamlined home-based family approval process (**Resource Family Approval**)
- Updated and expanded **training requirements** across provider and caregiver categories
- New caregiver **rates**
- Additional **funding for support, retention, recruitment and training** of resource families (\$17.2 million General Funds; \$30k Mono )

## Resource Family Approval (RFA)



## Resource Family Approval

- Streamlines the relative approval, foster care licensing, and adoption processes into a **single process** that occurs up front.



Statewide implementation  
on January 1, 2017



## Core Elements of RFA

- **One standard** – relatives and recruited families treated the same
- **One process** – approved for any child in foster care, approved in any county, and approved for guardianships & adoptions
- **Comprehensive assessment** required, includes:
  - Home Environment Assessment
  - Permanency Assessment
- Pre- and post-approval **training** required for all families
- Procedures for **expedited placements**



WIC § 16519.6



## Increased services and supports

- Individualized and coordinated services
- Intensive Services Foster Care
- Menu of Caregiver Supports could include:
  - Aides to provide transportation
  - Respite-only Families (could be unmatched families)
  - Higher foster care rate paid to family
  - Mentor assigned to family





## **RFA Implementation Plan**

---

- Joint plan: Child Welfare and Probation
- Submitted to state staff in 2016
- Received and included their feedback
- Living document: provides protocol for RFA, changes as we learn

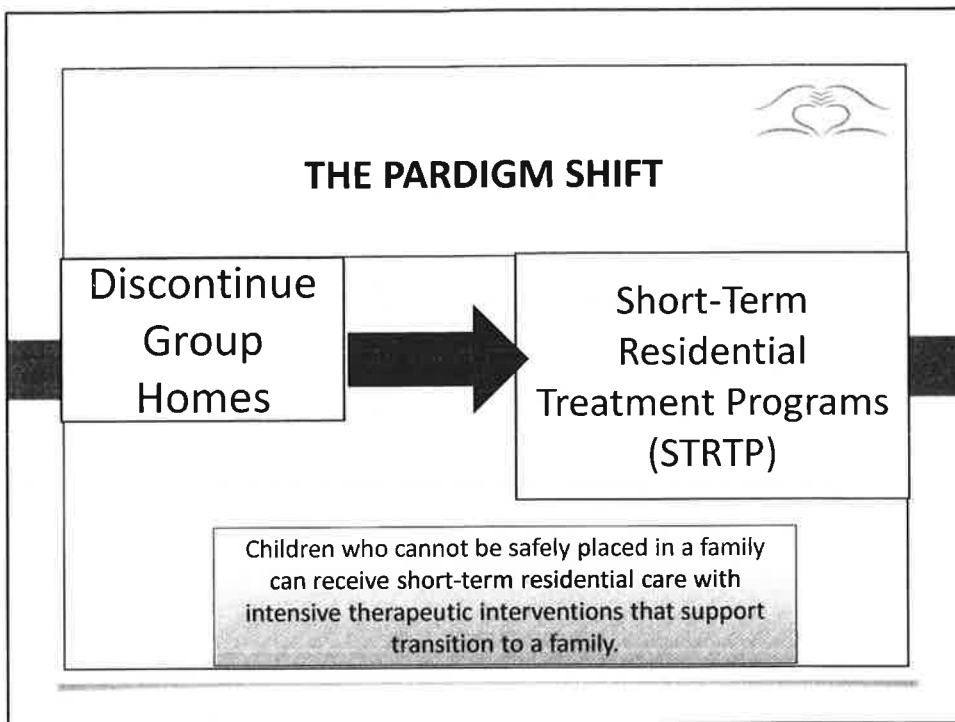
## **STRTPs**

---

**Short-term Residential Treatment Programs**  
(aka Short-term Residential Therapeutic Programs)

Old term: Group Homes

Currently none in Mono/Inyo



### Reducing Congregate Care

- STRTPs **only used** when child needs intensive 24-hr care for therapeutic or safety reasons that cannot be provided in a family setting.
- STRTPs must start **planning for transition to a home setting** at time of intake.
- STRTPs must provide **“core services”** to help transition.

## Child Welfare

- Average # of SCAN investigations: 11/month
- Children in foster care: 6
  - On-track for permanency (adoption): 5
- Voluntary Family Maintenance / Other: 5

## Probation

- Youth on formal Probation: 4
- Youth in Diversion Program: 6
- Youth in Wrap Program: 2

March 2017



## Overall Challenges

- Recruiting, Training, and Retaining:
  - Adequate number of Resource Families
- Intensive Services (including mental health)
  - Staffing appropriately/timely
- Responsibility for RFA shifts to County staff
  - New workload requirements for Child Welfare/Probation
  - Orientation/Training; Home Inspections; Psychosocial Assessments; Child Placement Assessments

## Strengths



- Successful Child and Family Teaming practice already in-place
- Not accustomed to relying on group home placements
- Active cross-agency and cross-county collaboration
- Small number of families in care allows for individualized support for child/youth, caregivers, families
- Justice system leadership is accessible and receptive
- Strong community-based services (Wraparound; Wild Iris; First 5 Home Visiting; education partners; hospital)

## Assistance Needed



- Identify and refer Resource Family candidates
  - ✓ Emergency Care and Respite Care only
  - ✓ Short-term
  - ✓ Long-term up to Adoption



---

*There's a critical need for Resource Families throughout Mono County. Currently, there are only three Resource Family Homes in the county. We are in need of more homes to help children remain in their communities and not be placed in out of County homes, far from all they know and love.*

---



**Mono County  
Resource Family  
Approval (RFA)  
Program**

**YOU can make a difference  
in the life of a child in your  
community...**

---



## What is a Resource Family?

- All children need and deserve a safe, loving, nurturing, accepting and consistent place to live where they can thrive and mature. Becoming a Resource Family caregiver provides a home for a child to do just that.
- A Resource Family is an individual, couple or family who wants to provide care to a related or unrelated child who is under the care of a county child welfare or probation agency.
- A Resource Family has successfully met approval standards which include building and ground inspection, risk assessment, background clearances, training and a permanency assessment as established in the Resource Family Written Directives.
- Resource Families support connecting children to safe caring relationships that can last a lifetime by focusing on families. Supportive and loving long-term relationships lead to stable permanent placements and improved permanency outcome for children, youth and young adults.

## How Do I Become a Resource Family?

Mono County Social Services staff will work with you to become a Resource Family. This new process is unified, family friendly, child centered streamlined application process. It will eliminate duplication and increase approval standards of all families that want to foster, adopt or provide legal guardianship to a child. The following is a partial list of requirements:

- Criminal record check/Live Scan
- Informational Meeting, Orientation and Pre-Approval Training
- Home environment assessment
- Permanency Assessment
- CPR/First Aid Certification
- Health and TB Screening
- In-home visits with all adults and children, youth and young adults
- Reference checks
- Verification and completed application forms

Upon approval, a Resource Family is considered to be approved for providing foster care, becoming a guardian or adopting a child without going through additional processes. Approval does not guarantee the placement of a child.



## Who Can Be A Resource Family?

Resource Families are individuals, married couples or a families. You may or may not have children of your own. You don't have to own your own home and you may live in an apartment/condo. Resource Families come from all ethnic, racial and religious backgrounds.

To be a Resource Family, you will need to:

- Live in Mono County
- Be at least 18 years old
- Have an income that covers the needs of your own family
- Have adequate bedroom space to accommodate all family members, including foster children
- Your home, inside and out must be safe and in good condition.

**Please give us a call or email:**

**Mono County Social Services**

760-924-1770 [mpreis@mono.ca.gov](mailto:mpreis@mono.ca.gov)

**Mono County Probation Department**

760-932-1730 [jsosa@mono.ca.gov](mailto:jsosa@mono.ca.gov)

**Visit us on the web:**

<http://monocounty.ca.gov/>

**March 21, 2017**  
**Regular Meeting**  
**Board of Supervisors**

**Item #9f – Mono**  
**County Cannabis Joint**  
**Committee Update**  
**Michael Draper**

A large, thick black L-shaped graphic is positioned on the left and bottom edges of the slide, framing the central text.

# CANNABIS JOINT COMMITTEE UPDATE

Mono County Board of Supervisors meeting

March 21, 2017



# Background

- January 17 – Temporary moratorium extension on commercial cannabis activities until Dec. 2, 2017.
- Staff direction:
  - *coordinate with the Town of Mammoth Lakes*
  - *Schedule a joint meeting with Mammoth Lakes Town Council*
  - *Follow through with the Cannabis Joint Committee work plan*

# DISCUSSION

## Federal Status

- Marijuana is illegal under federal law; no court decisions have been issued on the constitutional relationship between federal, state and local laws
- Federal activities
  - *Kohl-Welles Amendment*
  - *Rohrabacher-Farr Amendment*
  - *HR 979 (Respect State Marijuana Laws Act of 2017, introduced)*
  - *HR 1013 (Regulate Marijuana like Alcohol Act, introduced)*

# DISCUSSION

## State Status

- Current legal activity
  - *Adult use and possession*
  - *Cultivation of 6 plants/household indoors*
  - *Medical cannabis cooperatives for dispensing*
  
- Awaiting draft regulations
  - *Medical Cannabis Cultivation Program (MCCP) is now CalCannabis: commercial production of medical and recreational cultivation licensing*
  - *Bureau of Medical Cannabis Regulation (BMCR) expects to publish medical use and cultivation regulations this April, recreational use and cultivation regulations this September*
  - *Bureau of Marijuana Control will license distribution and testing of medical cannabis*
  - *Office of Manufactured Cannabis Safety will license edibles and testing of recreational cannabis*

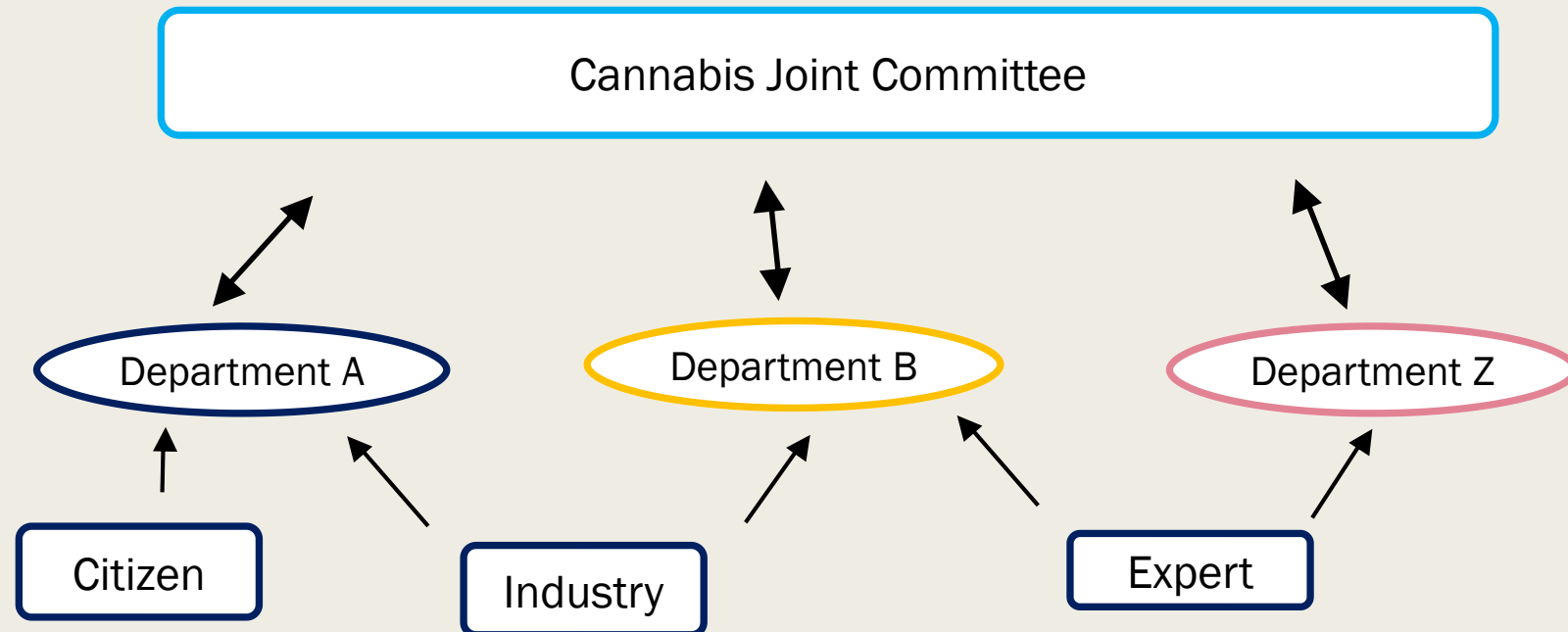
# DISCUSSION

## Tribal Activities

- Federally recognized Tribes may conduct cannabis business
- Local government may not prevent delivery via public roads

# Staff Coordination

- Cannabis Task Force name change to Cannabis Joint Committee
  - *Purpose: coordinate departmental responsibilities, communication and authority for cannabis regulation*
- 2 meetings held, additional meeting held with Town of Mammoth Lakes staff.
- 6 priority items:
  - *Land Use*
  - *Taxation*
  - *Edibles*
  - *Law Enforcement*
  - *Social Programs*
  - *Public Health*



# Local Community Outreach

- Antelope Valley
  - *Desire for outdoor cultivation*
  - *Opportunity for taxes and business, desire to keep monies within the community*
  - *Supports strong security requirements*
  - *Critique that it will impact quality of life, impact children, and create additional substance abuse*
  - *Need to maintain the beauty and views in the area*
  - *Desire to have another conversation*
- June Lake
  - *Emotional conversation*
  - *Concern of County's liability and Federal repercussions*
  - *Concern about the image of June Lake*
  - *Desire for another conversation*

## ■ Mono Basin

- *Industrial grows are concerning, would like smaller scale*
- *Need to maintain area view-sheds*
- *Encourage environmentally friendly systems*
- *Regulation needs to prevent toxic discharge*
- *Allow personal outdoor cultivation*
- *Could issues dissolve themselves? Very little private land in the area and commercial space meeting buffer requirements*

## ■ Bridgeport

- *Point made that it is illegal under federal law, it was noted the Cole memo is still in place*
- *Question about possibility for taxation*
- *Supports taxation - would like to see it used for certain things*
- *Restriction on locations (buffer zones)*
- *Regulate water quality*
- *Concern expressed that if there are too many restrictions and too difficult to allow, then could encourage illegal grows*
- *We don't want to miss an opportunity to tax for the benefit of communities*

# Take-Away From Outreach

- General support for cultivation
- Mixed support for retail – State buffer may prevent retail in many communities
- Support for taxing
- Concern for the impact to quality of life
- First public conversation
- Highly emotional conversation
- Some are not prepared to express their opinion publicly
- There is a lot of value in what we are doing
- Need more structure for conversation
- Need to draft proposals in-house for public review



# Industrial Inquires

- 3 meetings with potential cultivators
- Multiple phone calls
- Interested individuals are monitoring our work
- 12 inquires have been made at the State level for cultivation license in Mono

# Next Steps

- All options are on the table
  - *Complete ban*
  - *Do nothing/Allow State oversight*
  - *Regulate*
- Complete initial round of public outreach: Chalfant/Benton/Hammil & Long Valley/Paradise/Swall
- Establish public webpage within the County site
- Monitor other California counties progress
- Research
- Second round of community meetings and/or other forums directed by the Board

# Coleville

