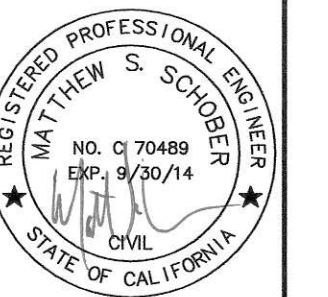


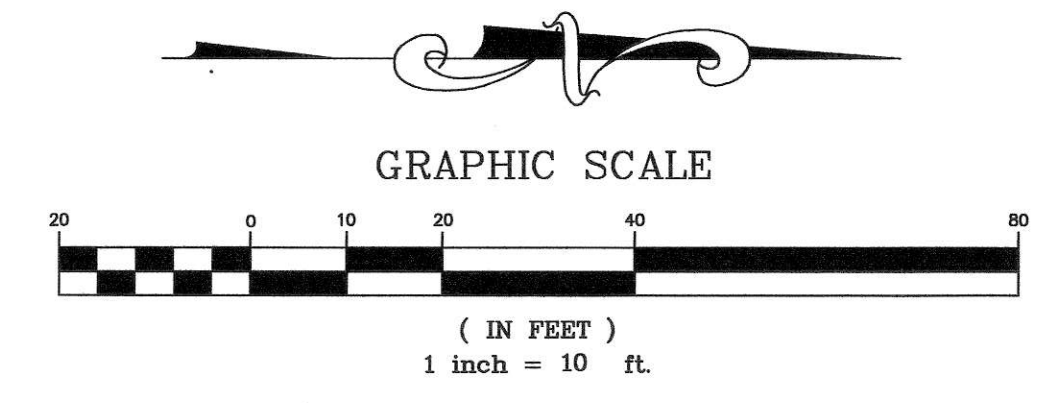

 triad/holmes assoc.
 civil engineering
 land surveying
 MAMMOTH LAKES
 BISHOP
 REDWOOD CITY
 SAN LUIS OBISPO
 post office box 1570
 548 old mammoth rd., ste. 202
 MAMMOTH LAKES, ca 93546
 phone (760) 934-7888
 fax (760) 934-5818
 e-mail triad@thinc.com
 873 north main st. suite 150
 BISHOP, ca 93514
 phone (760) 872-8173
 fax (760) 873-8024
 e-mail bishop@thinc.com
 777 woodside rd. suite 9
 REDWOOD CITY, ca 94061
 phone (650) 366-0216
 fax (650) 366-0598
 e-mail sf@thinc.com
 555 chorro st. suite 9
 SAN LUIS OBISPO, ca 93405
 phone (805) 544-8808
 fax (805) 544-8832
 e-mail slob@thinc.com

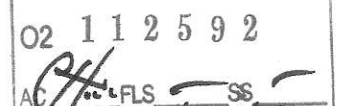
Copyright (C) 2012 by
 Triad/Holmes Associates.
 All Rights Reserved. This
 Document is Intended Only
 for Use on the Project
 Specified in the Title Block.
 Any Reproduction of this
 Document or Portions of
 this Document, Without the
 Express Written Consent
 of Triad/Holmes is
 Prohibited.

PREPARED & SUBMITTED BY:

 REGISTERED PROFESSIONAL ENGINEER
 MAY THEEW S. SCHUBER
 NO. 670489
 EXP. 9/30/14
 CIVIL
 STATE OF CALIFORNIA
 DATE: 09/06/2012

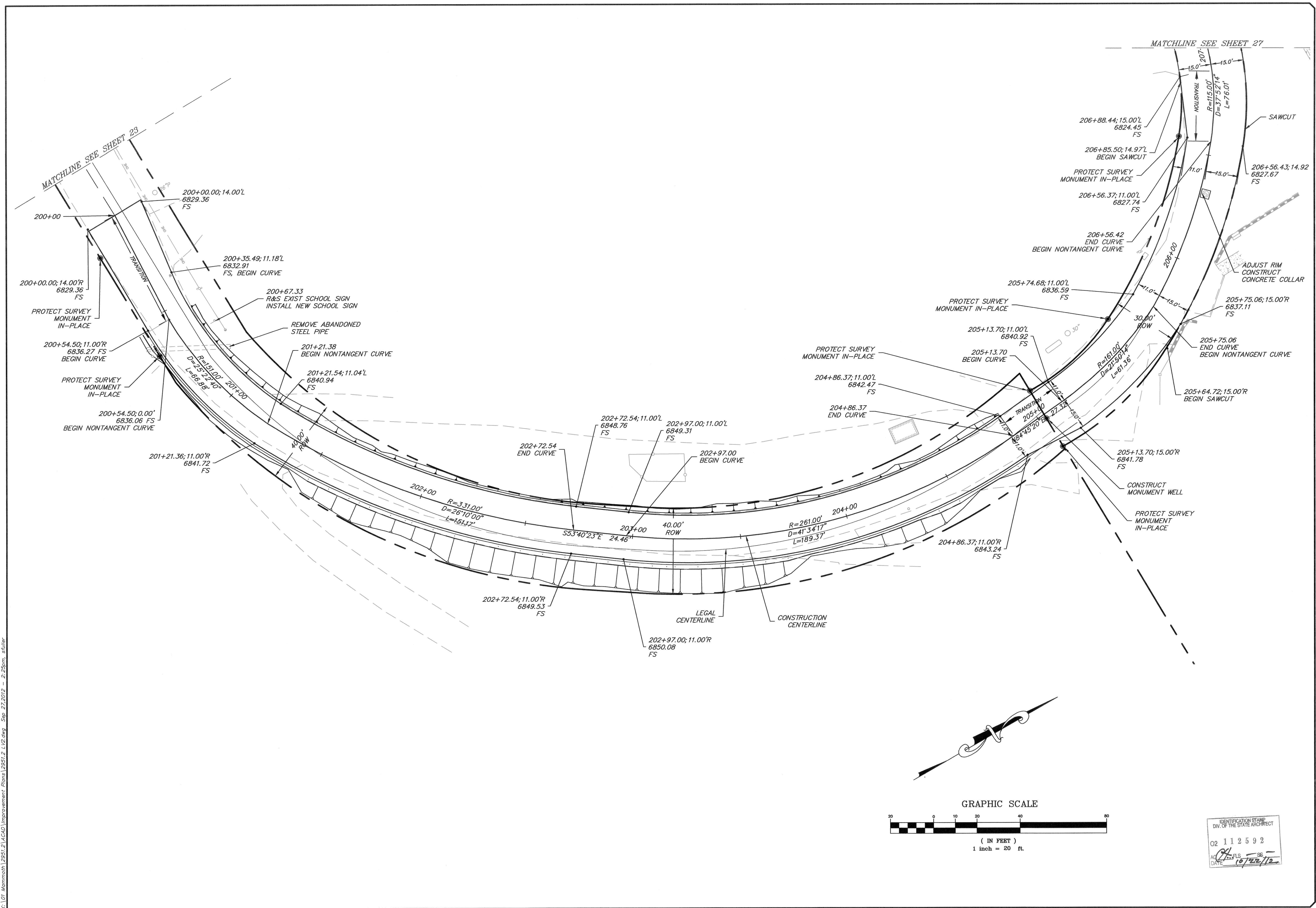
LEE VINING
 STREETS REHABILITATION PROJECT
 LEE VINING AVENUE

DATE 09/06/2012
 SCALE AS SHOWN
 DRAWN MS/SF/JSP
 JOB NO. 01.2951.2
 SHEET
 25
 OF 34 SHEETS

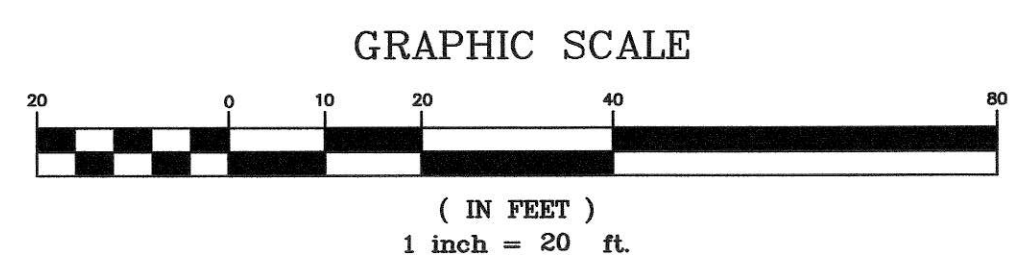


IDENTIFICATION STAMP
 DIV. OF THE STATE ARCHITECT
 02 112592

 DATE 10/22/12

K:\01_Mammoth\2951.2\CAD\Improvement Plans\2951.2 LV.dwg Oct 11, 2012 - 4:39pm, sf/jsp



K:\01 Mammoth\2951.2\ACAD\Improvement Plans\2951.2 L12.dwg Sep 27, 2012 - 2:25pm, sf/jsp



IDENTIFICATION STAMP

 DIV. OF THE STATE ARCHITECT

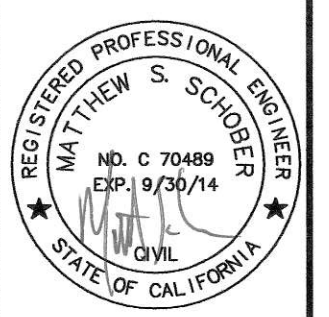
 02 112592

 AT: FLS

 DATE: 10/22/12

Copyright (C) 2012 by
 Triad/Holmes Associates.
 All Rights Reserved. This
 Document is Intended Only
 for Use on the Project
 Specified in the Title Block.
 Any Reproduction of this
 Document or Portions of
 this Document, Without the
 Express Written Consent of
 Triad/Holmes is
 Prohibited.

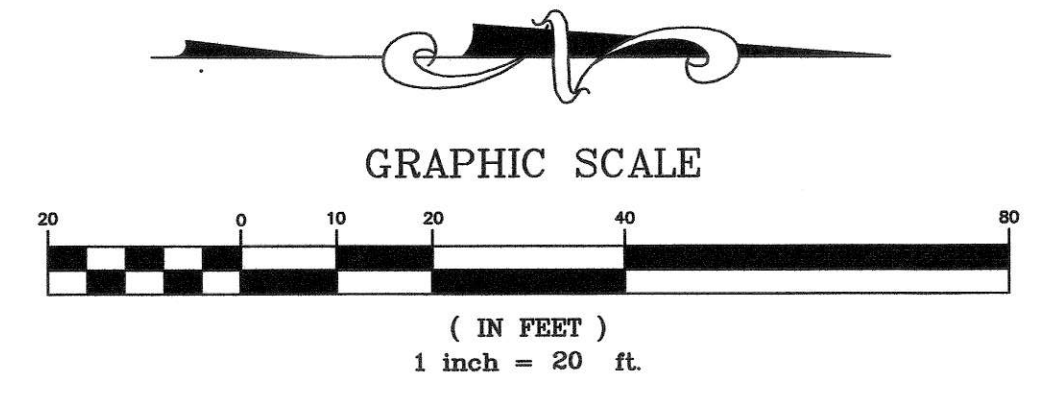
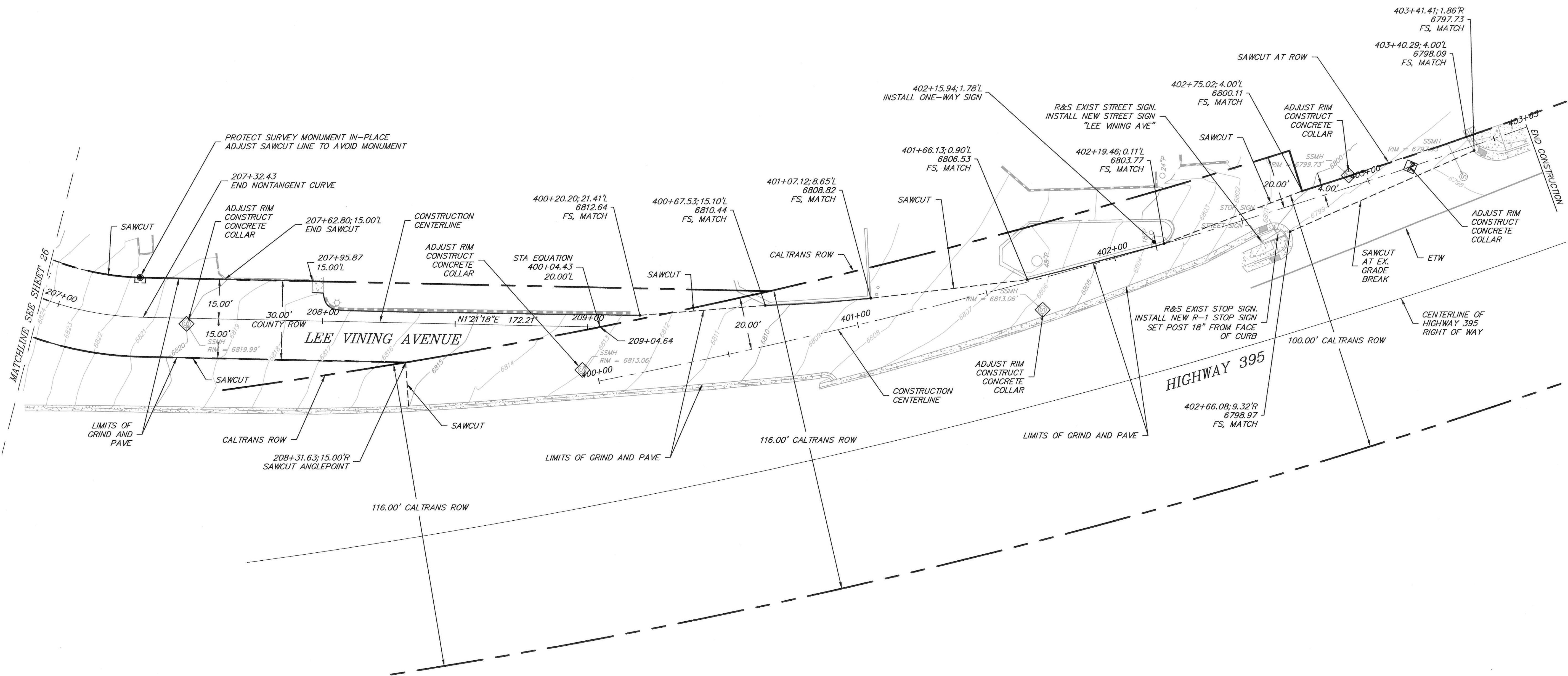
PREPARED & SUBMITTED BY:



DATE: 09/06/2012

LEE VINING AVENUE
STREETS REHABILITATION PROJECT
LEE VINING AVENUE

DATE	09/06/2012
SCALE	AS SHOWN
DRAWN	MS/SF/JSP
JOB NO.	01.2951.2
SHEET	27
	OF 34 SHEETS

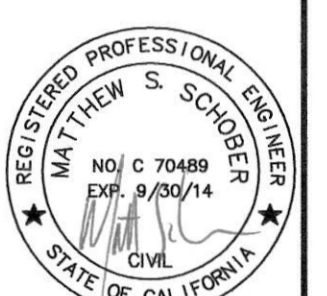


K:\01_Mammoth\2951.2\MCAD\Improvement_Plans\2951.2_LV2.dwg Jan 28, 2013 - 9:02am, mschreiber



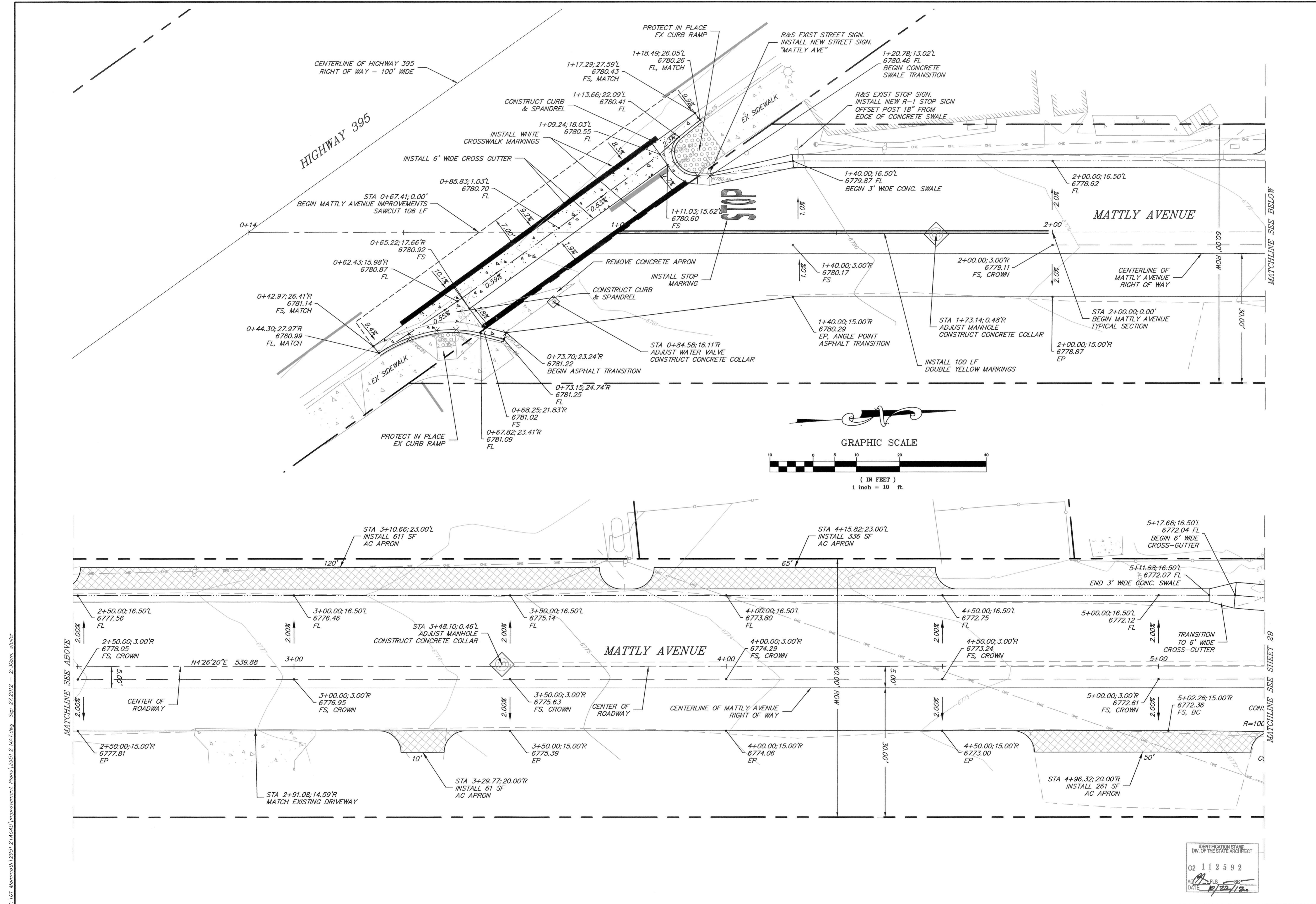
triad/holmes assoc.
 civil engineering
 land surveying
 MAMMOTH LAKES
 BISHOP
 REDWOOD CITY
 SAN LUIS OBISPO
 post office box 1570
 549 old mammoth rd., ste. 202
 MAMMOTH LAKES, ca 93246
 phone (760) 934-7588
 fax (760) 934-5619
 e-mail triad@tho.com
 873 north main st. suite 150
 BISHOP, ca 93314
 phone (760) 972-4273
 fax (760) 973-8024
 e-mail bshop@tho.com
 777 woodside rd. suite a
 REDWOOD CITY, ca 94061
 phone (650) 366-0218
 fax (650) 366-0288
 e-mail sf@tho.com
 555 chorro st. suite a
 SAN LUIS OBISPO, ca 93405
 phone (805) 544-8908
 fax (805) 544-8932
 e-mail sl@tho.com

Copyright (C) 2012 by
 Triad/Holmes Associates.
 All Rights Reserved. This
 Document is intended Only
 for Use on the Project
 Specified in the Title Block.
 Any Reproduction of this
 Document or Portions of
 this Document, Without the
 Express Written Consent
 of Triad/Holmes is
 Prohibited.

PREPARED & SUBMITTED BY:

 REGISTERED PROFESSIONAL ENGINEER
 MATTHEW S. SCHRODER
 NO. C 70489
 EXP. 9/30/14
 STATE OF CALIFORNIA
 CIVIL
 DATE: 09/06/2012


LEE VINING
 STREETS REHABILITATION PROJECT
 MATTLY AVENUE

DATE 09/06/2012
 SCALE AS SHOWN
 DRAWN MS/SF/JSP
 JOB NO. 01.2951.2
 SHEET 28
 OF 34 SHEETS



K:\01_Mammoth\2951\2\4\CD\Improvement_Plans\2951.2_MAT.dwg Sep 27, 2012 - 2:30pm, sullivan

IDENTIFICATION STAMP
 DIV. OF THE STATE ARCHITECT
 02 112592
 DATE 10/22/12



 triad/holmes assoc.
 civil engineering
 land surveying
 MAMMOTH LAKES
 BISHOP
 REDWOOD CITY
 SAN LUIS OBISPO

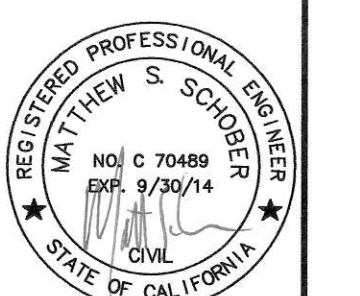
post office box 1570
 549 old mammoth rd., su. 202
 MAMMOTH LAKES, CA 93248
 phone (760) 834-7588
 fax (760) 834-5818
 e-mail triad@tholmes.com

777 woodside rd., suite a
 REDWOOD CITY, CA 94061
 phone (650) 366-0216
 fax (650) 366-0288
 e-mail bholmes@tholmes.com

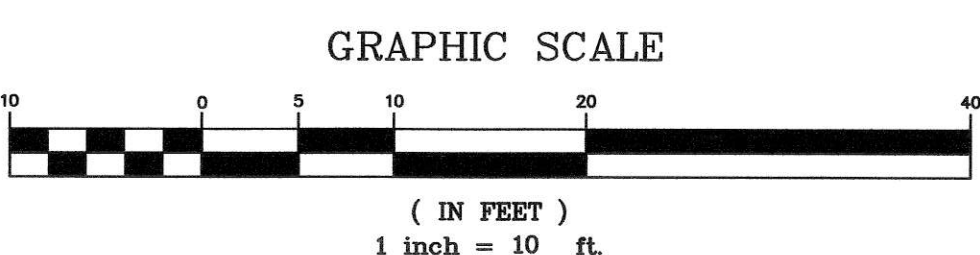
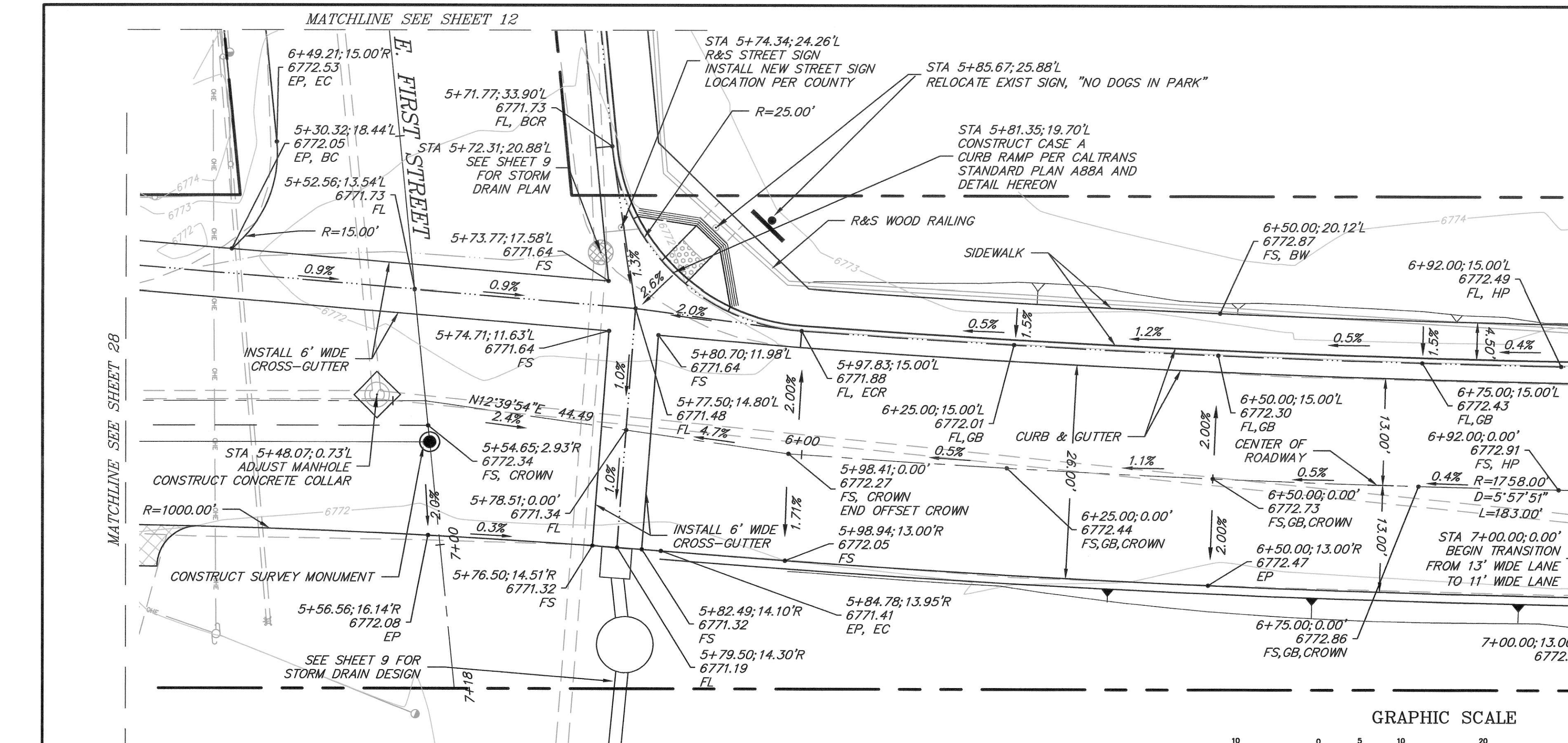
555 charro st., suite a
 SAN LUIS OBISPO, CA 95050
 phone (805) 544-8608
 fax (805) 544-8632
 e-mail sbolmes@tholmes.com

Copyright (C) 2012 by
 Triad/Holmes Associates.
 All Rights Reserved. This
 Document is intended Only
 for Use on the Project
 Specified in the Title Block
 Any Reproduction of this
 Document or Portions of
 the Document Without the
 Expressed Written Consent
 of Triad/Holmes is
 Prohibited.

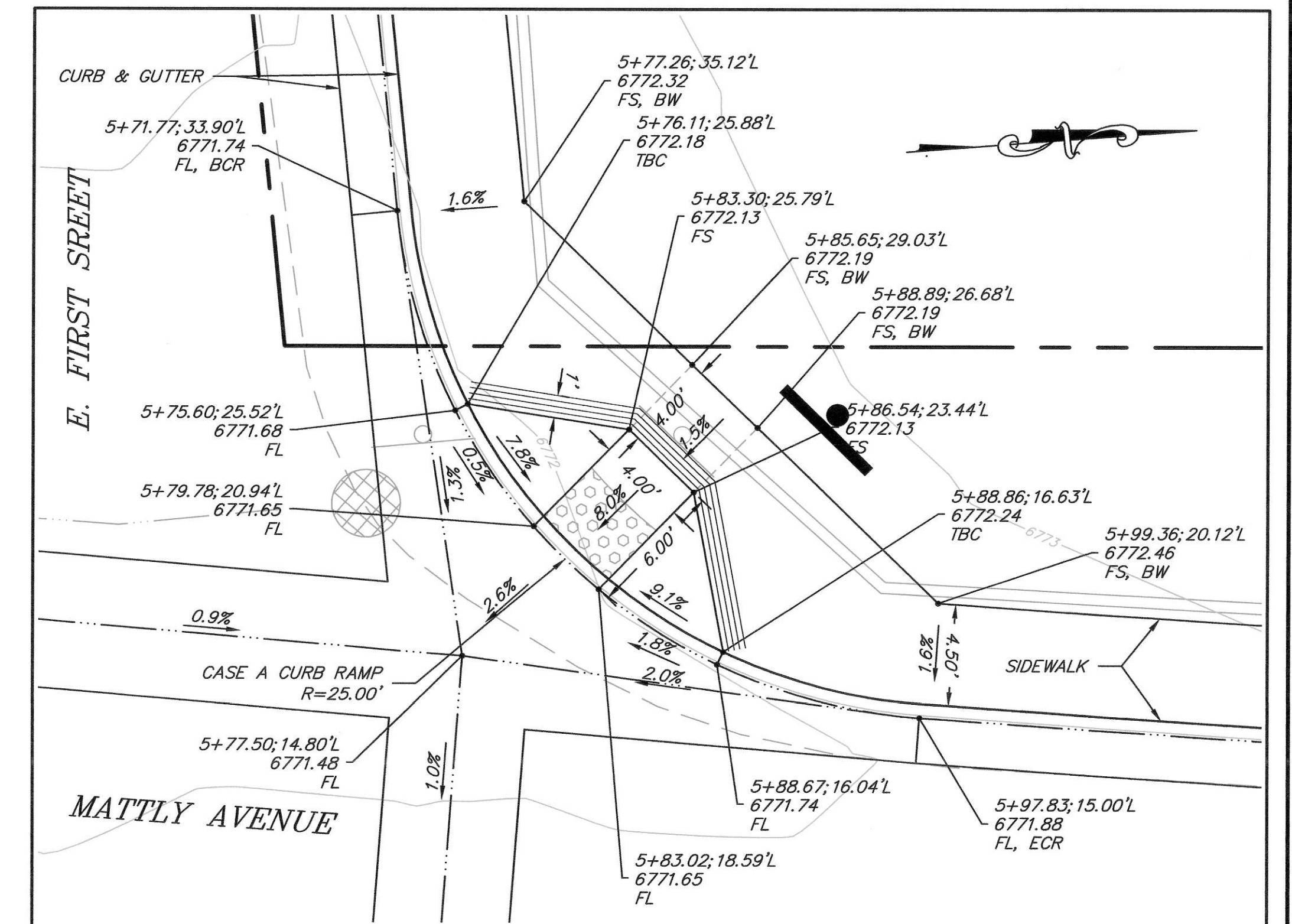
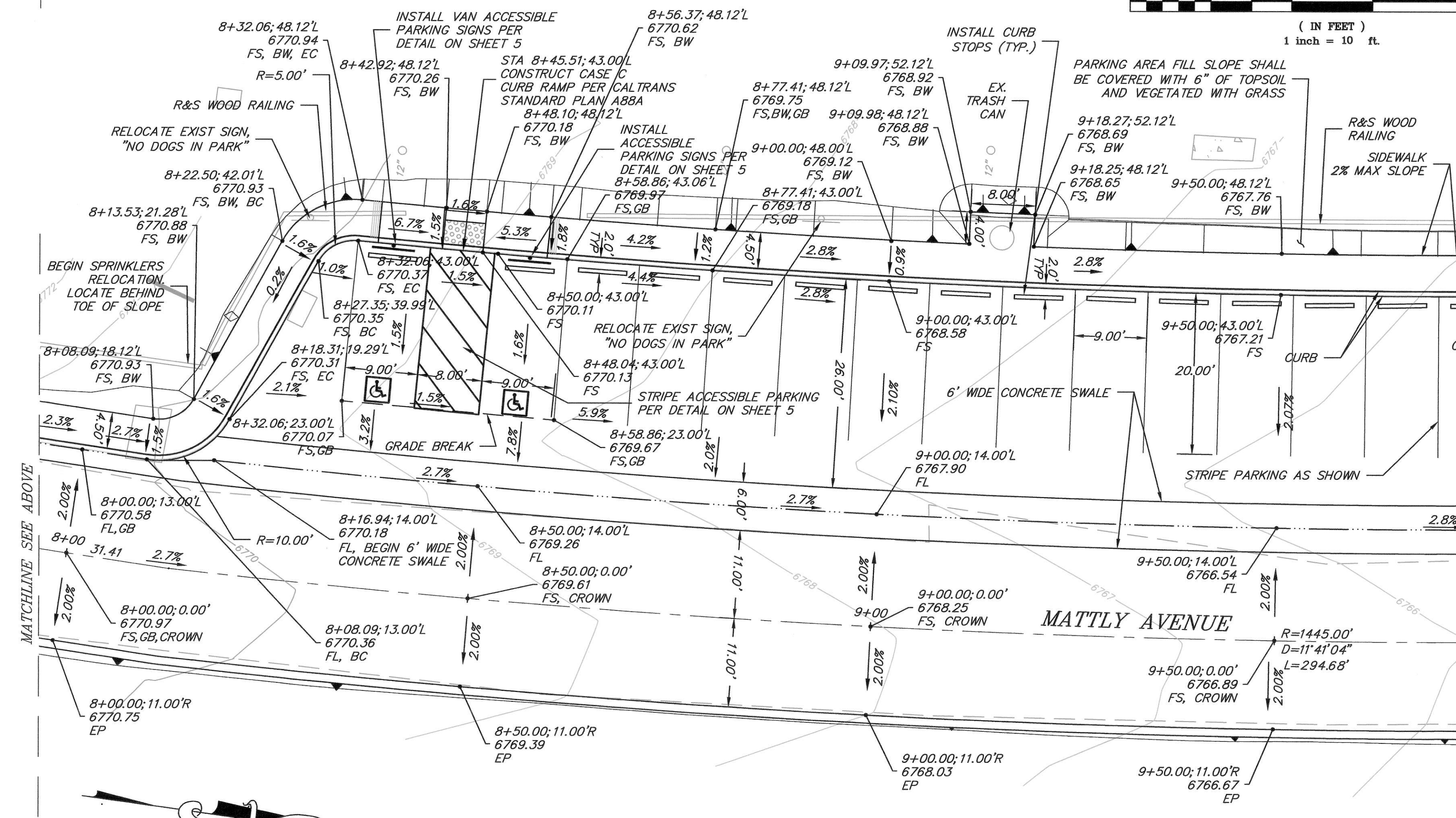
PREPARED & SUBMITTED BY:



DATE: 09/06/2012



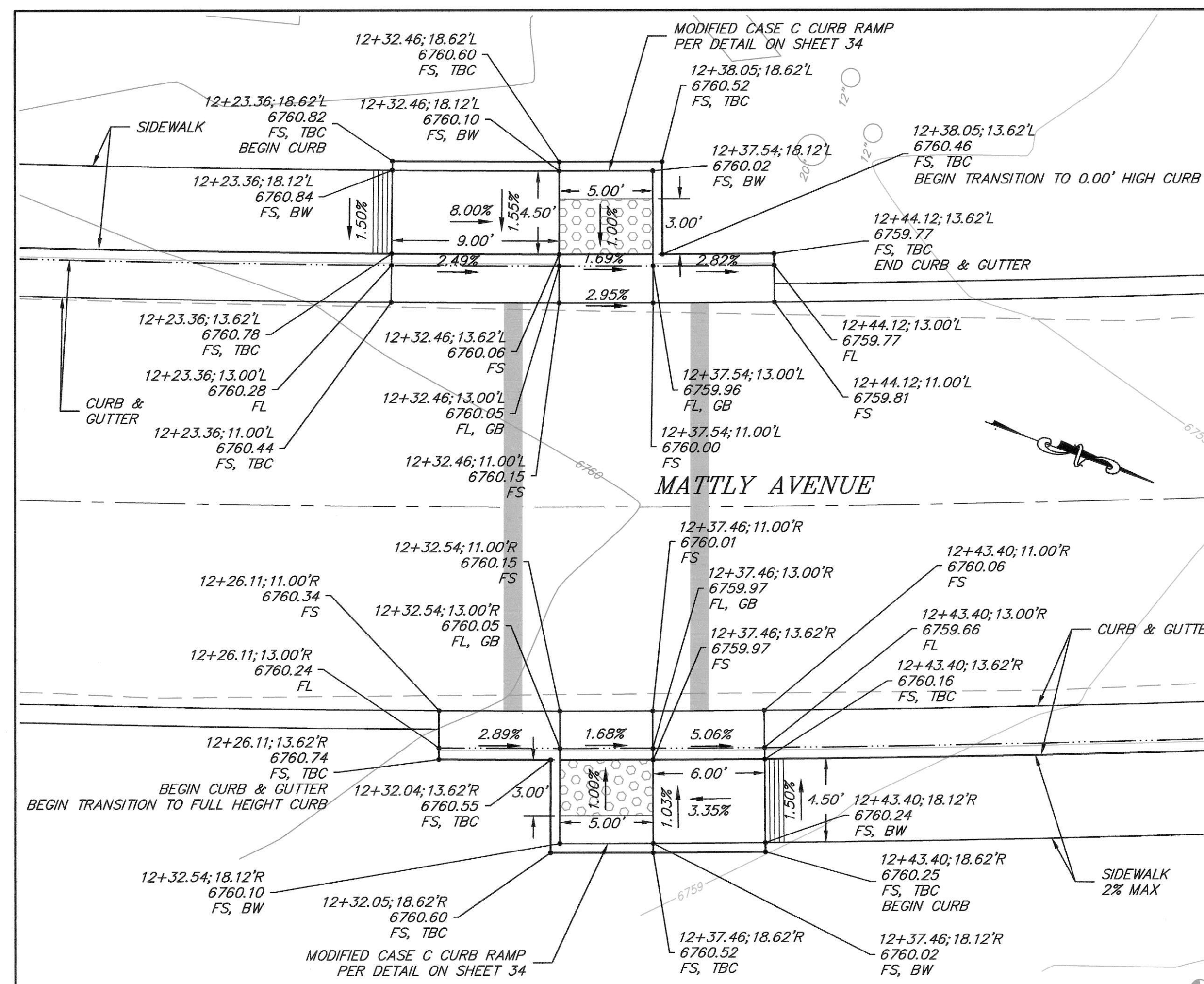
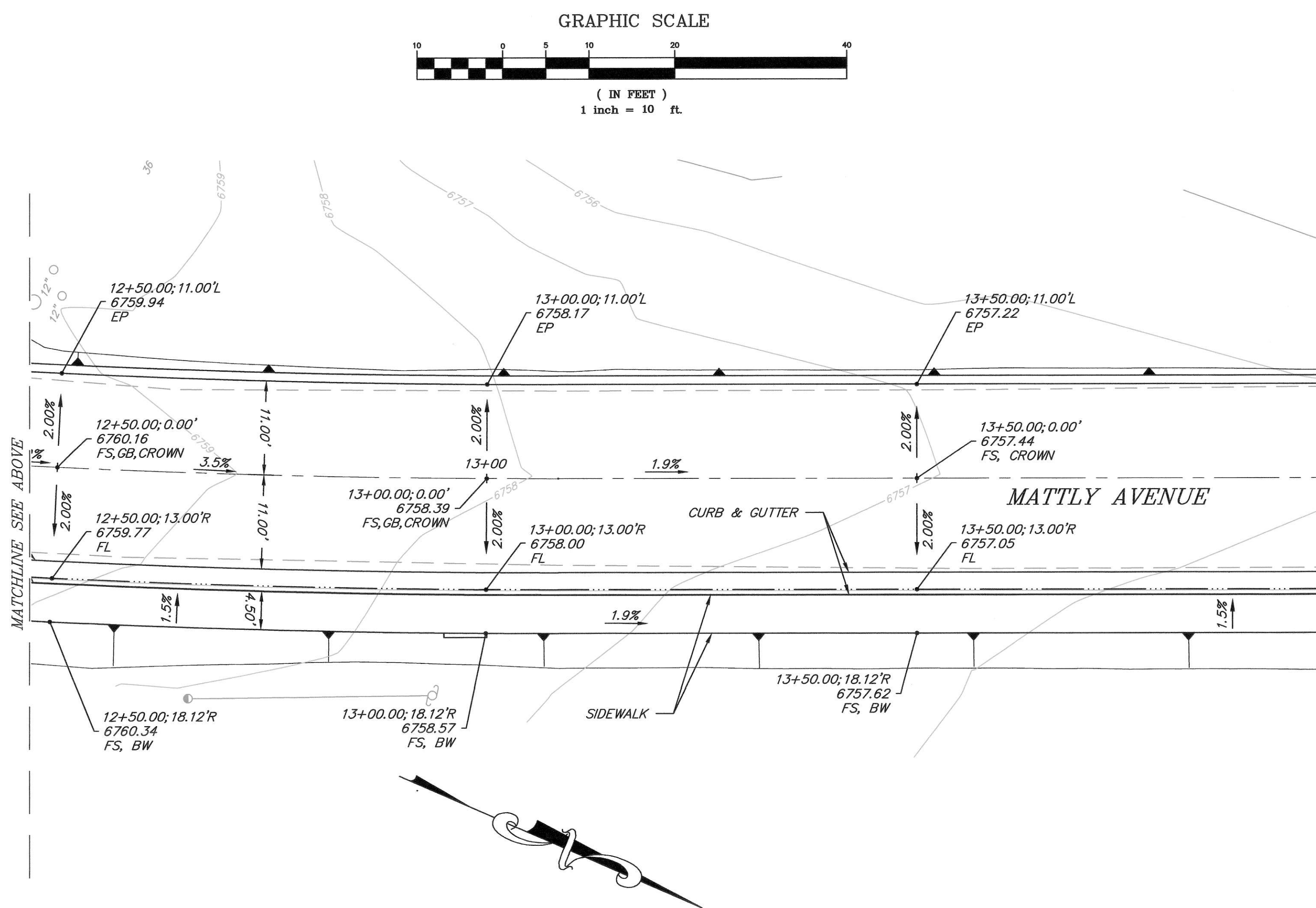
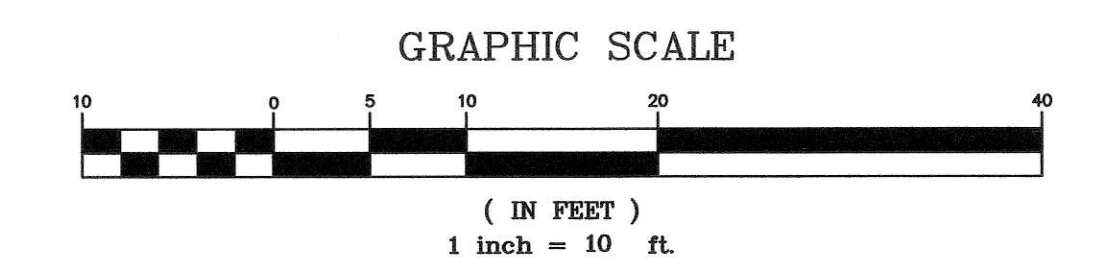
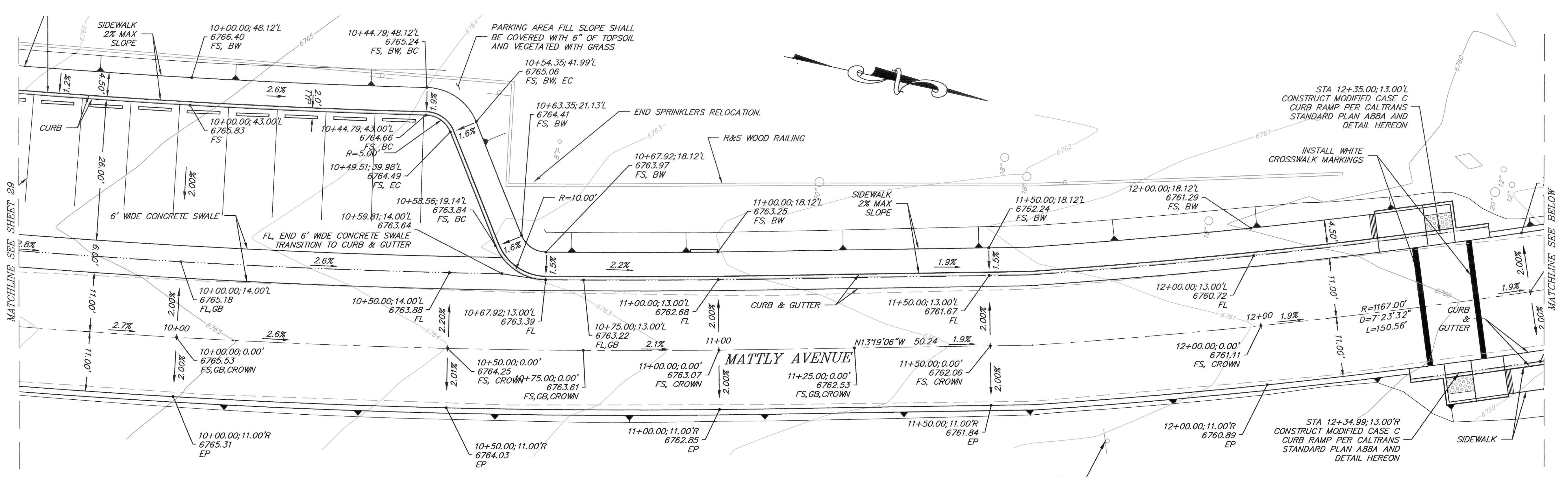
PARKING SUMMARY	
TOTAL SPACES PROVIDED =	22 SPACES
ACCESSIBLE SPACES REQUIRED =	1 VAN SPACE
ACCESSIBLE SPACES PROVIDED =	2 SPACES (1 VAN)



CURB RAMP DETAIL SCALE 1"=5'

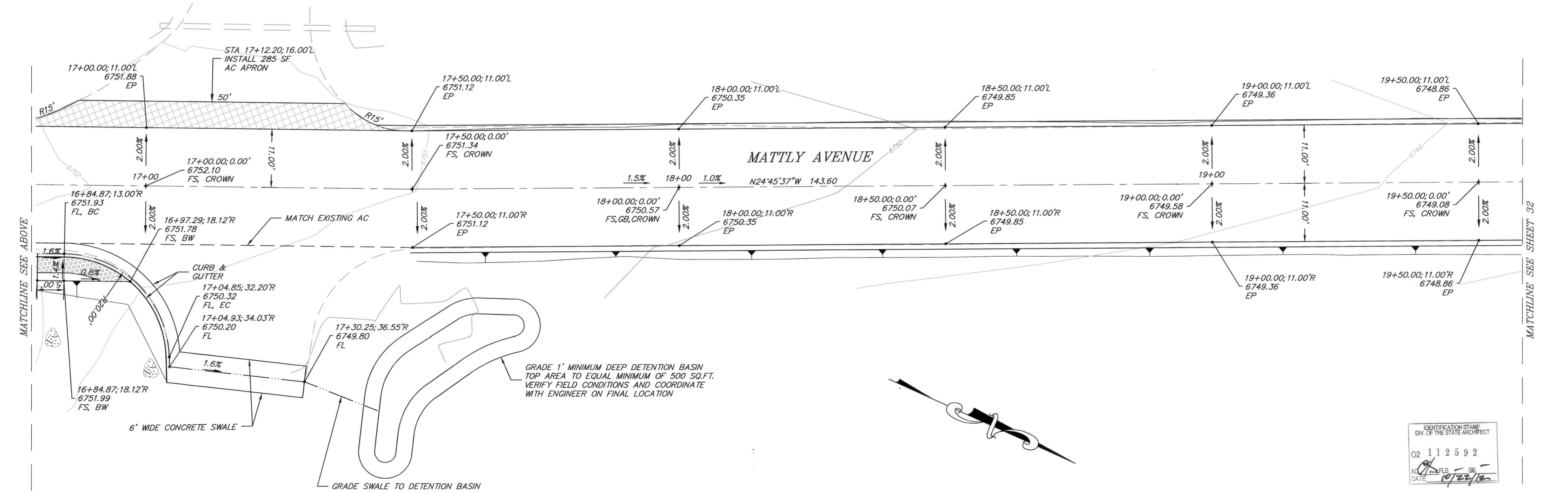
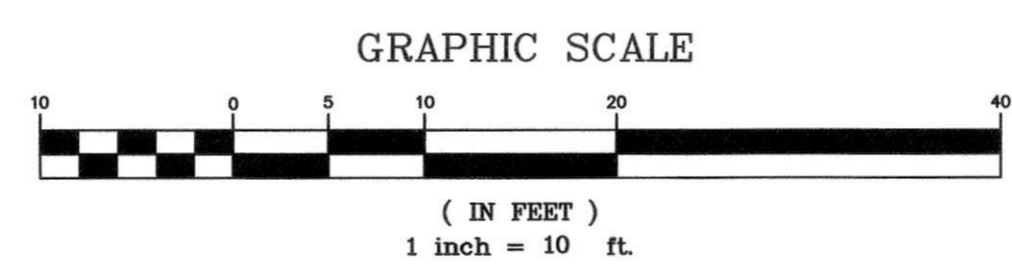
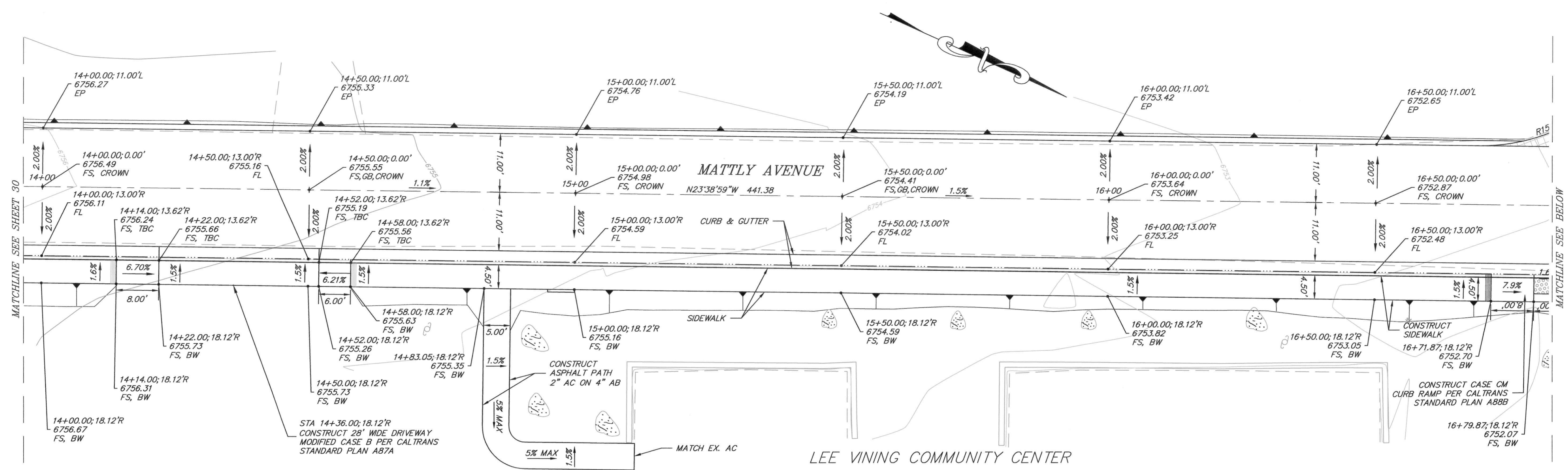
LEE VINING
 STREETS REHABILITATION PROJECT
 MATTLY AVENUE

DATE 09/06/2012
 SCALE AS SHOWN
 DRAWN MS/SF/JSP
 JOB NO. 01.2951.2
 SHEET 29
 OF 34 SHEETS



K:\01_Mammmoth\2951.2_VACAD\Improvement_Plan\2012\2_MAT.dwg Sep. 27, 2012 - 2:37pm stuller

IDENTIFICATION STAMP
DIV. OF THE STATE ARCHITECT
02 112592



IDENTIFICATION STAMP
 DIV. OF THE STATE ARCHITECT
 02 112592
 DATE 10/22/12

K:\01_Mammouth\2951.2\ACAD\Improvement Plans\2951.2_MATT.dwg Sep 27, 2012 - 2:39pm, stuller



triad/holmes assoc.
civil engineering
land surveying
MAMMOTH LAKES
BISHOP
REDWOOD CITY
SAN LUIS OBISPO

post office box 1570
548 W. MAMMOTH ST., STE. 302
MAMMOTH LAKES, CA 93546
phone (805) 834-7585
fax (760) 834-5819
e-mail triad@thinc.com

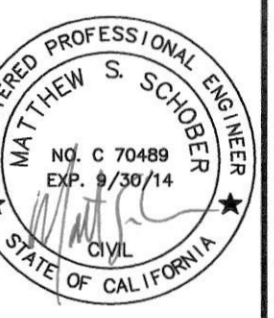
873 north main st. suite 150
BISHOP, CA 93514
phone (760) 873-4273
fax (760) 873-8024
e-mail blishop@thinc.com

777 woodside rd. suite a
REDWOOD CITY, CA 94061
phone (650) 366-0218
fax (650) 366-0288
e-mail sl@thinc.com

555 chorro st. suite a
SAN LUIS OBISPO, CA 93405
phone (805) 544-8908
fax (805) 544-8932
e-mail slo@thinc.com

Copyright (C) 2012 by
Triad/Holmes Associates.
All Rights Reserved. This
Document is Intended Only
for Use on the Project
Specified in the Title Block.
Any Reproduction or Use
of this Document, Without the
Expressed Written Consent
of Triad/Holmes is
Prohibited.

PREPARED & SUBMITTED BY:



DATE: 09/06/2012

LEE VINING
STREETS REHABILITATION PROJECT
MATTLY AVENUE

DATE 09/06/2012

SCALE AS SHOWN

DRAWN MS/SF/JSP

JOB NO. 01.2951.2

SHEET 32

OF 34 SHEETS

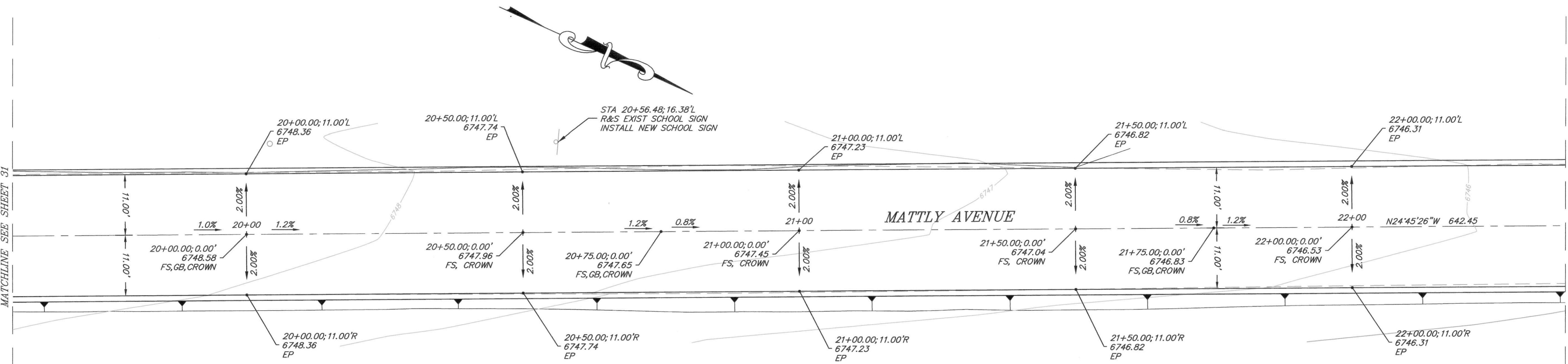
MATCHLINE SEE SHEET 31

MATCHLINE SEE BELOW

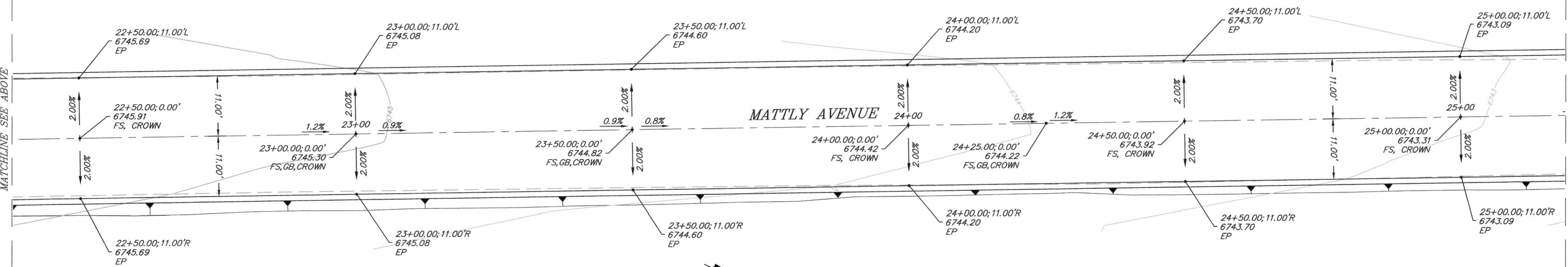
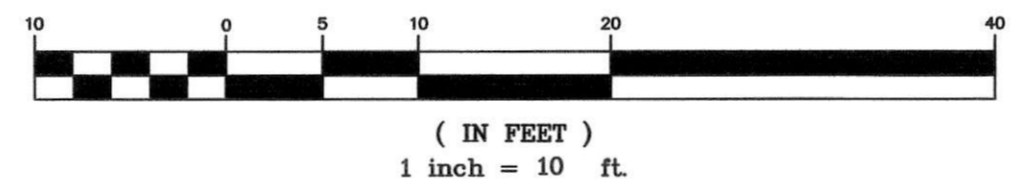
MATCHLINE SEE ABOVE

MATCHLINE SEE SHEET 33

K:\01 Mammouth\2951.2\ACAD\Improvement Plans\2951.2.MAT.dwg Sep 27, 2012 - 2:53pm, sfuller



GRAPHIC SCALE



IDENTIFICATION STAMP
DIV. OF THE STATE ARCHITECT
02 112592
DATE 10/2/12

Copyright (c) 2012 by

 Triad/Holmes Associates.

 All Rights Reserved. This

 Document is Intended Only

 for Use on the Project

 Specified in the Title Block.

 Any Reproduction of this

 Document or Portions of

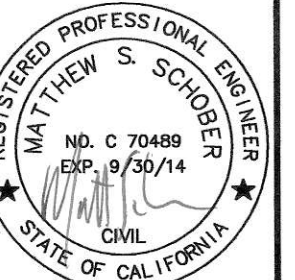
 this Document, Without the

 Expressed Written Consent

 of Triad/Holmes is

 Prohibited.

PREPARED & SUBMITTED BY:



DATE: 09/06/2012

LEE VINING

 STREETS REHABILITATION PROJECT

 MATTLY AVENUE

DATE 09/06/2012

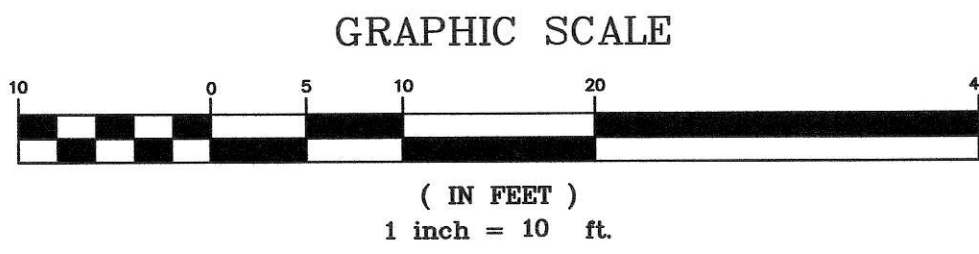
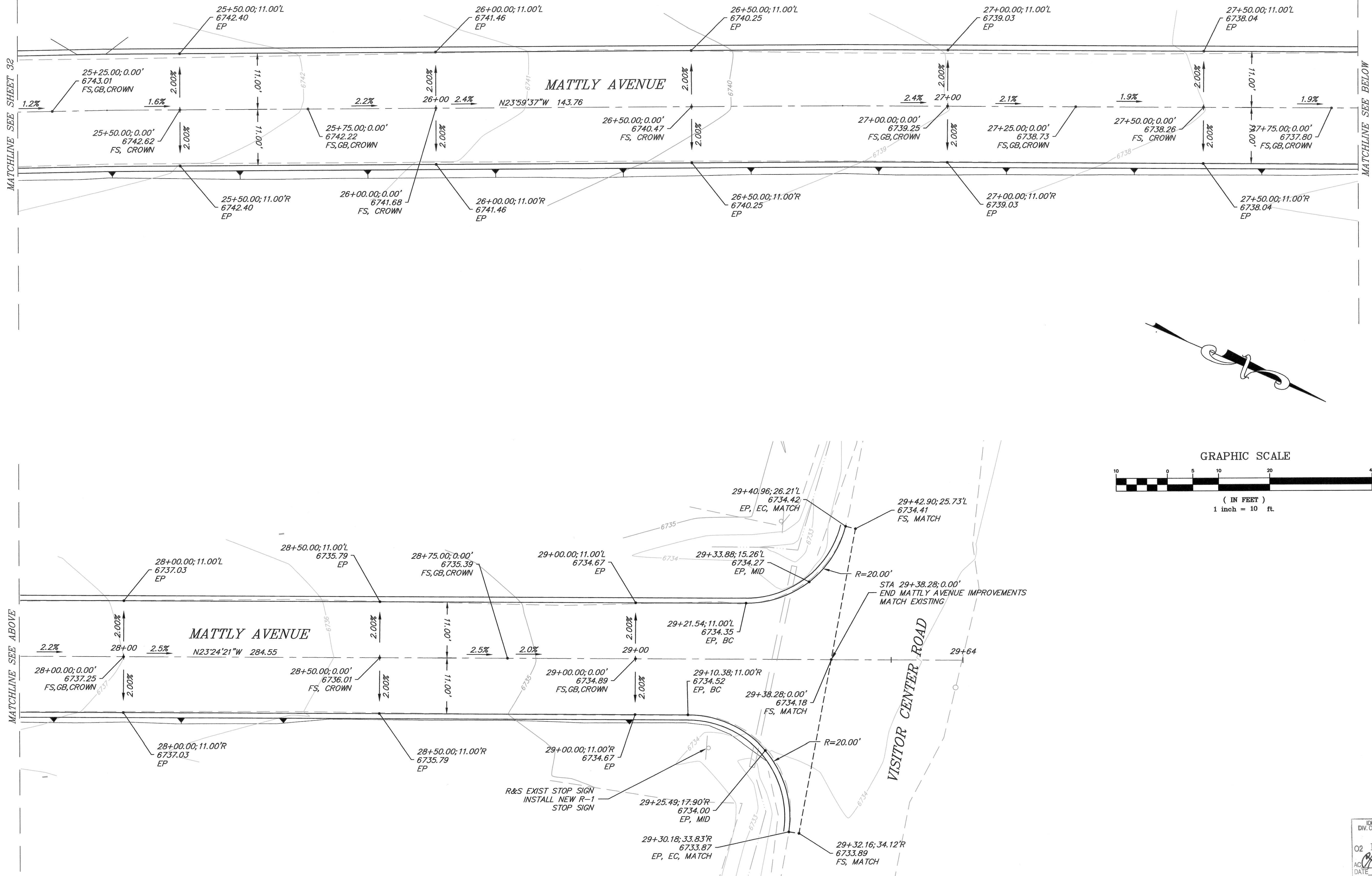
SCALE AS SHOWN

DRAWN MS/SF/JSP

JOB NO. 01.2951.2

SHEET 33

OF 34 SHEETS



IDENTIFICATION STAMP

 DIV. OF THE STATE ARCHITECT

 02 112592

 DATE 10/22/12

K:\01 Mammoth\2951.2\ACAD\Improvement Plans\2951.2 MAT.dwg Sep 27, 2012 - 2:55pm, sluller

K:\01_Mammoth\2051.2_MCAD\Improvement_Plans\2051.2_Titles\Index-Notes.dwg Sep 27, 2012 11:21am sfl/ler

119

CURB QUANTITIES

TYPE	CUBIC YARDS PER LINEAR FOOT
A1-6	0.02585
A1-8	0.03084
A2-6	0.05903
A2-8	0.06379
A3-6	0.01036
A3-8	0.01435
B1-4	0.02185
B1-6	0.02930
B2-4	0.05515
B2-6	0.06171
B3-4	0.00641
B3-6	0.01074
B4	0.05709
D-4	0.04083
D-6	0.06904
E	0.06661

TABLE A

CURB TYPE	"H1"	"H2"	"W1"	"W2"
A1-6	1'-2"	6"	7 1/2"	1 1/2"
A1-8	1'-4"	8"	8"	2"
A2-6	1'-0"	6"	2'-7 1/2"	1 1/2"
A2-8	1'-2"	8"	2'-8"	2"
A3-6	6"	5"	7 1/2"	1 1/4"
A3-8	8"	7"	7 3/4"	1 3/4"
B1-4	1'-0"	4"	7 1/2"	2 1/2"
B1-6	1'-2"	6"	9"	4"
B2-4	10"	4"	2'-7 1/2"	2 1/2"
B2-6	1'-0"	6"	2'-9"	4"
B3-4	4"	3"	7"	2"
B3-6	6"	5"	8 1/2"	3 1/2"
D-4	10"	4"	1'-6"	1'-11"
D-6	1'-0"	6"	2'-2"	1'-9"

NOTES:

- Case A driveway section typically applies.
- Use Case B driveway section when ramp slopes would exceed 10% in Case A.
- Use Case B driveway section when sidewalk cross slope would exceed 2% in Case A.
- 4"x3'-0" except for curb heights over 10" where 4:1 slopes shall be used on curb slope.
- X is a variable when sidewalk is located where wheelchairs may traverse the surface. Slopes shall not exceed 8.33%.
- Sidewalk and ramp thickness "T" at driveway shall be 4" for residential and 6" for commercial.
- Difference in slope of the driveway ramp and the slope of a line between the gutter and a point on the roadway 5'-0" from gutter line shall not exceed 15%. Reduce driveway ramp slope, not gutter slope, where required.
- Minimum width of clear passageway for sidewalk shall be 4'-0".
- Retaining curbs and acquisition of construction easement may be necessary for narrow sidewalks or curb heights in excess of 6".
- Across the pedestrian route at curb ramp locations, the gutter pan slope shall not exceed 1" of depth for each 2'-0" of width.

STATE OF CALIFORNIA DEPARTMENT OF TRANSPORTATION
CURBS AND DRIVEWAYS
 NO SCALE
A87A

121

RAISED TRUNCATED DOME PATTERN (IN-LINE) DETECTABLE WARNING SURFACE

GROOVING DETAIL

SECTION A-A

SECTION B-B

SECTION C-C

DETAIL A TYPICAL TWO-RAMP CORNER INSTALLATION

DETAIL B TYPICAL ONE-RAMP CORNER INSTALLATION

RETROFIT DETAIL

NOTES:

- As site conditions dictate, Case A through Case C curb ramps may be used for corner installations similar to those shown in Detail A and Detail B. The case of curb ramps used in Detail A do not have to be the same. Case A through Case C curb ramps also may be used at mid block locations, as site conditions dictate.
- If distance from curb to back of sidewalk is too short to accommodate ramp and 4'-0" platform (landing) as shown in Case A, the sidewalk may be depressed longitudinally as in Case B, or C, or may be widened as in Case D.
- When ramp is located in center of curb return, crosswalk configuration must be similar to that shown for Detail B.
- As site conditions dictate, the retaining curb side and the flared side of the Case C ramp shall be constructed in reversed position.
- If located on a curve, the sides of the ramp need not be parallel, but the minimum width of the ramp shall be 4'-0".
- Side slope of ramp flares vary uniformly from a maximum of 10% at curb to conform with longitudinal sidewalk slope adjacent to top of the ramp, except in Case C and Case F.
- The curb ramp shall be outlined, as shown, with a 1'-0" wide border with 1/2" grooves approximately 3/4" on center. See grooving detail.
- Transitions from ramps and landing to walks, gutters or streets shall be flush and free of abrupt changes.
- Maximum slopes of adjoining gutters, the road surface immediately adjacent to the curb ramp or accessible route shall not exceed 5 percent within 4'-0" of the top and bottom of the curb ramp.
- Curb ramps shall have a detectable warning surface that extends the full width and 3'-0" depth of the ramp. Detectable Warning Surfaces shall conform to the details on this plan and the requirements in the Special Provisions.
- The edge of the detectable warning surface nearest the street shall be between 6" and 8" from the gutter flowline.
- Sidewalk and ramp thickness, "T", shall be 3 1/2" minimum.
- Utility pull boxes, manholes, vaults and all other utility facilities within the boundaries of the curb ramp will be relocated or adjusted to grade by the owner prior to, or in conjunction with, curb ramp construction.
- For retrofit conditions, removal and replacement of curb apron will be at the contractor's option, unless otherwise shown on project plans.

STATE OF CALIFORNIA DEPARTMENT OF TRANSPORTATION
CURB RAMP DETAILS
 NO SCALE
A88A

triad/holmes assoc.
 civil engineering
 land surveying

MAMMOTH LAKES BISHOP REDWOOD CITY SAN LUIS OBISPO

post office box 1870
 548 old mammoth rd., ste. 202
 MAMMOTH LAKES, ca 93246
 phone (760) 934-7885
 fax (760) 934-9819
 e-mail triad@tholinc.com

873 north main st. suite 150
 BISHOP, ca 93314
 phone (805) 873-2273
 fax (805) 873-8024
 e-mail bishop@tholinc.com

777 woodside rd. suite c
 REDWOOD CITY, ca 94061
 phone (650) 368-0216
 fax (650) 368-0216
 e-mail sf@tholinc.com

555 chorro st. suite c
 SAN LUIS OBISPO, ca 93405
 phone (805) 544-8805
 fax (805) 544-8805
 e-mail sl@tholinc.com

Copyright (C) 2012 by Triad/Holmes Associates.
 All Rights Reserved. This document is intended only for use on the project specified in the title block. Any reproduction of this document without the expressed written consent of Triad/Holmes is prohibited.

PREPARED & SUBMITTED BY:

DATE: 09/06/2012

LEE VINING
STREETS REHABILITATION PROJECT
CALTRANS STANDARD DETAILS

DATE: 09/06/2012
 SCALE: AS SHOWN
 DRAWN: MS/SF/JSP
 JOB NO.: 01.2951.2
 SHEET: 34

IDENTIFICATION STAMP
 DIV. OF THE STATE ARCHITECT
 02 112592
 NO. 10722/12
 DATE: 10/22/12

OF 34 SHEETS

2010 STANDARD PLAN A87A

2010 STANDARD PLAN A88A