



MONO COUNTY STRATEGIC PLAN UPDATE

November 15, 2021

credit: Jenny Kendrick



GOOD EVENING!

MONO COUNTY BOARD OF SUPERVISORS



Supervisor, Dist. 5
Stacey Corless



Supervisor, Dist. 4
John Peters



Supervisor, Dist. 1
Jennifer Kreitz



Supervisor, Dist. 2
Rhonda Duggan



Supervisor, Dist. 3
Bob Gardner



INTRODUCTIONS

Justin Caporusso, Caporusso Communications

Moderator

Supervisor Jennifer Kreitz

Opening Remarks

Robert Bendorf, Municipal Resource Group

Presentation

Supervisor Bob Gardner

Closing Remarks

Supervisor Jennifer Kreitz

Chair, Mono County Board of Supervisors



TONIGHT'S DISCUSSION

WHAT IS A STRATEGIC PLAN?

KEY TERMS AND CONCEPTS

MONO COUNTY'S CURRENT STRATEGIC PLAN

WHY UPDATE A STRATEGIC PLAN?

MONO COUNTY'S UPDATE PROCESS

NEXT STEPS





Polling Question #1

According to the latest census, what is Mono County's population?

- a. 24,218
- b. 19,236
- c. 8,550
- d. 13,195
- e. None of the above

WHAT IS A STRATEGIC PLAN?

- Serves as a framework for decisions or for securing support/approval
- Provides a basis for more detailed organizational and countywide planning
- Explains an entity's business / organization to others in order to inform, motivate and involve
- Assists in benchmarking and performance monitoring
- Stimulates change and become building block(s) for future growth.

WHAT ARE WE TRYING TO ACHIEVE? & KEY TERMS AND CONCEPTS

“A strategic management approach that provides direction, inspires a workforce and provides accountability.”

MISSION	What we do, who we are, our purpose
VISION	What we strive to achieve and be
VALUES	Describes, in part, our culture
STRATEGIC FOCUS AREAS / GOALS	Broad set of what we want to achieve
OUTCOMES	Achieve by accomplishing our goals/measurable
STRATEGIES	Specific approach to achieve our outcomes
ACTION ITEMS	Steps/Actions to achieve our strategies
PERFORMANCE MEASUREMENT	Report Card

MONO COUNTY'S CURRENT STRATEGIC PLAN



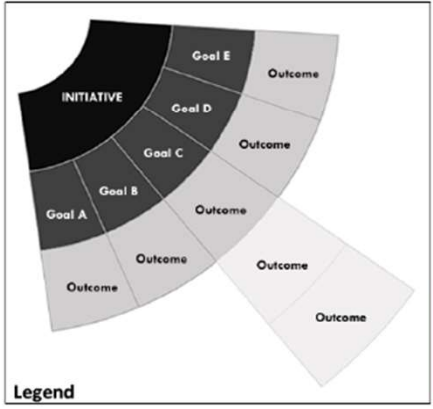
2019 - 2024

MONO COUNTY, CA STRATEGIC PLAN

VISION Mono County: Outstanding Community Services; Quality of Life Beyond Compare

MISSION To support all our communities by delivering superior services while protecting our unique rural environment.

VALUES Collaboration; Customer Service; Excellence; Innovation; Integrity; Results Oriented



Scan me

more information at <https://bit.ly/MonoCountyStrategicPlan>



OUR VISION AND MISSION

VISION - *Outstanding Community Services;
Quality of Life Beyond Compare*

MISSION – *To support all our communities by delivering superior services while protecting our unique rural environment.*



Polling Question #2

What is the approximate square mileage of Mono County?

- a. 10,000 square miles
- b. 1,450 square miles
- c. 3,000 square miles
- d. 8,000 square miles

OUR VALUES

Collaboration

Customer Service

Excellence

Innovation

Integrity

Results Oriented





OUR STRATEGIC FOCUS AREAS

Improve Public Safety & Health

Enhance Quality of Life for County Residents

Fiscally Healthy County and Regional Economy

Improve County Operations

Support the County Workforce

WHY UPDATE A STRATEGIC PLAN

- Local governments need to evolve as organizations as they provide an array of critical services
 - Methods of service delivery to address current and future needs of the county
- Allows a review and reset in particular areas if needed
- Public entities are adaptive in nature
 - Arm of the State of California
- A renewed focus on ACTION
- Begins with identifying who we are, what we care about and what we need to achieve



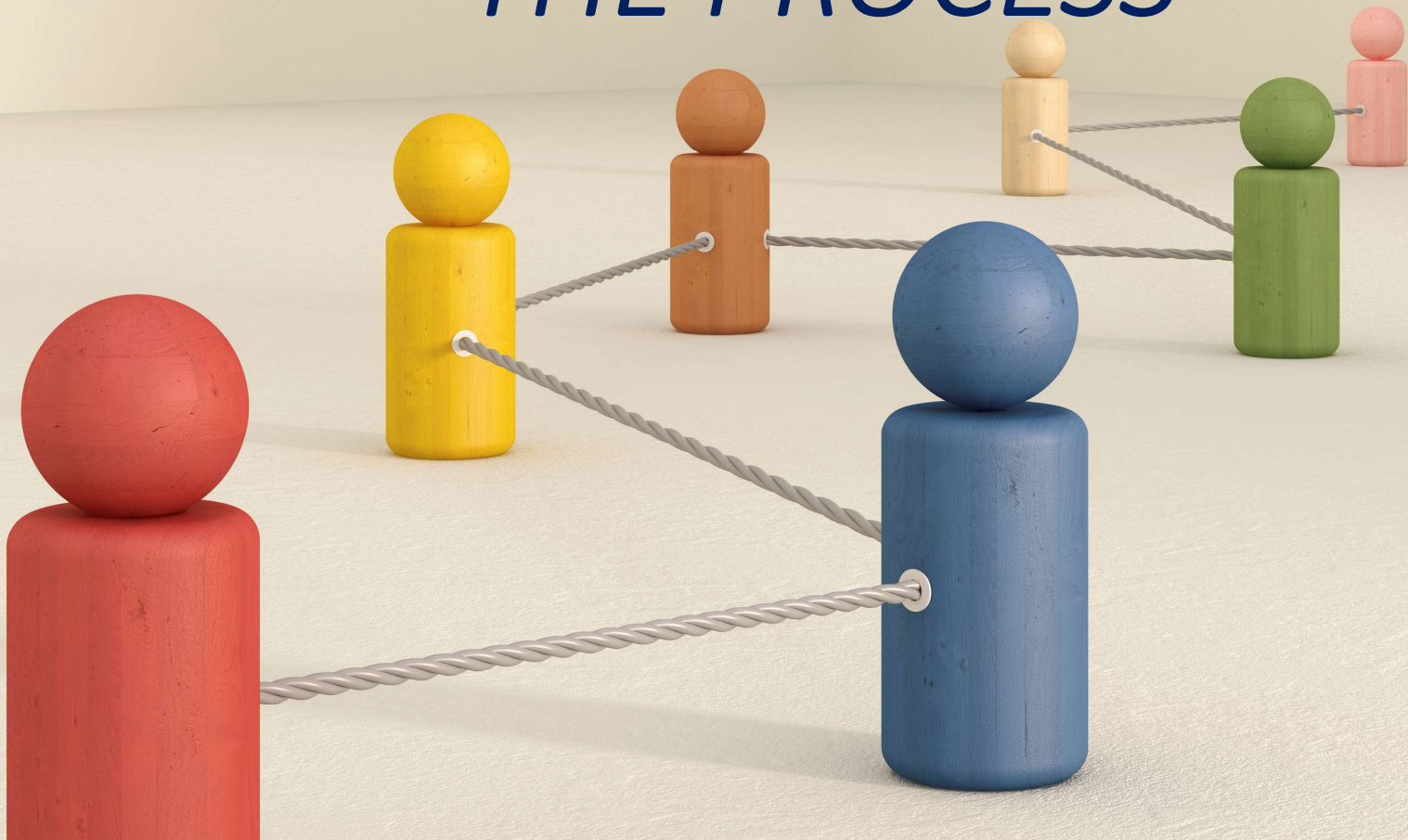
Polling Question #3

Is it a State of California mandate that each county adopt their own Strategic Plan?

- a. Yes
- b. No
- c. It's Optional

STRATEGIC PLAN UPDATE

“THE PROCESS”



AD-HOC COMMITTEE

Supervisor Kreitz

Supervisor Gardner

Robert Lawton

Stacey Simon

Tony Dublino

Janet Dutcher

Kathy Peterson

Wendy Sugimura

John Craig

Alicia Vennos

Justin Caporusso

Chair - Board of Supervisors

Vice Chair - Board of Supervisors

County Administrator

County Counsel

Director – Public Works

Director – Finance

Director – Social Services

Director – Community Development

Assistant County Administrator

Director – Economic Development

Communications Support

The background of the slide is a close-up photograph of a wooden surface covered with numerous colorful wooden blocks. The blocks are in various colors including purple, blue, green, orange, red, pink, grey, brown, and yellow. They are scattered across the surface, some standing upright and some lying flat, creating a textured and busy visual field.

“The Big Four”

Core Strategic Planning Elements

- Assessment
- Engagement
- Development
- Implementation

INTERNAL ASSESSMENT

- One on One meetings with Supervisors
- One on One meetings with Department Heads
- Meetings with the County Administrator
- Review of current Strategic Plan
- Review of Operations (Surface)
- Strength and Weaknesses Review

ENGAGEMENT

Board of Supervisors

- Retreat / Workshop
- Individual Interviews

Department Heads

- Retreat / Workshop
- Individual Interviews

“Environmental Scan”

- Board of Supervisors – Desired community and employee input
- Provide Strategic Plan Information / opportunities to provide input

DEVELOPMENT

- Review input, comments, direction
- Review Mission, Vision, Values, Focus Areas, Design
- Links to county finance and budget performance
- Review Intended Outcomes
 - Organizational focus
 - Countywide focus
- How do we make the SP relevant to everyone

IMPLEMENTATION

- Recommendations provided to the Board of Supervisors
 - Further Direction provided as appropriate
- Upon final approval
 - Monitor and evaluate Short, Medium and Long Term Outcomes
 - Market and Promote
 - Day to Day Management of the Strategic Plan through
 - Leadership
 - Collaboration
 - Political Support
 - Measurement



Polling Question #4

In what year was Mono County created?

- a. 1850
- b. 1861
- c. 1966
- d. 1776

COMMUNITY & STAKEHOLDER INPUT



The Mono County Board of Supervisors invites you to help update our Strategic Plan, originally adopted in 2017. Your input will assist us as we gather input from a variety of sources and implement a new and refreshed plan. We are excited to invite your participation!

1. What are your priorities for Mono County? Review the list of topics below. Choose no more than seven that you feel should be priorities and rank them 1 to 7 with 1 being your highest/most important priority. If you feel an important topic(s) is missing, please enter it into the "Other" section provided and include a ranking number.

- Health promotion and disease prevention: _____
- Safe and affordable housing: _____
- Access to behavioral health and substance abuse prevention/treatment services: _____
- Quality of life for children: _____
- Quality of life for our aging population: _____
- Justice, Equity, Diversity, Inclusion: _____
- Reducing Poverty and Hunger: _____
- Rural infrastructure (roads, internet access) and services: _____
- Disaster emergency preparedness: _____
- Public Safety / Law Enforcement: _____
- Criminal justice diversion and prevention: _____
- Greenhouse gas emission reduction: _____
- Solid Waste Collection, Recycling and Disposal: _____
- Agricultural land preservation: _____
- Connections between agricultural businesses and local consumers: _____
- Marketing Mono County for sustainable tourism: _____
- Preservation and enhancement of Public Lands (Recreation, Habitat): _____
- Job growth and skill development for our eligible workforce: _____
- New business development and business retention: _____
- Other: _____

2. What is Mono County's greatest strength and how should the County build on this strength?

3. What is the greatest challenge Mono County will face over the next several years?

4. What is a service to the public that Mono County could improve? How can we make it better?

5. Please provide your Mono County zip code: _____ (optional)

Once completed, please click on the finished link in the survey or print, scan and email a copy to:

Mono County
County Administrator
PO Box 696
Bridgeport, CA 93517
Email: cao@mono.ca.gov

THANK YOU FOR YOUR PARTICIPATION

WE NEED TO HEAR FROM YOU!

How you can get involved....

MonoCounty.ca.gov/strategic-planning

Mono County Strategic Plan

Mono County
County Administrator
PO Box 696
Bridgeport, CA 93517
Email: cao@mono.ca.gov

2019-2024 Mono County Strategic Plan

Interact with the Plan

Download the Plan

Mono County Strategic Plan: Community Survey

Condado de Mono Plan Estratégico: Encuesta a la Comunidad



Supervisor Bob Gardner

Vice-Chair, Mono County Board of Supervisors



NEXT STEPS

- County Administrator - Brown Bag events with employees
- Ad-Hoc Committee
 - Review and compile stakeholder input
 - Review departmental and countywide priorities
 - Review performance metrics for the Strategic Plan
 - Review & Discuss Strategic Focus Areas/priorities, values, mission and vision
 - Recommendations to the Board of Supervisors for consideration
 - Board of Supervisors – Provide final direction
 - Final Adoption – Early Spring 2022
 - Quarterly performance reports
- ALL - Promote, market, and incorporate Strategic Plan elements into everyday service